

# Wired magnetic door sensor

Fireproof ABS material housing

20±5(mm) gap

Max voltage≤100V DC,Max current≤500mA

Use for wooden door or window

White/Black color optional

**SMQT**



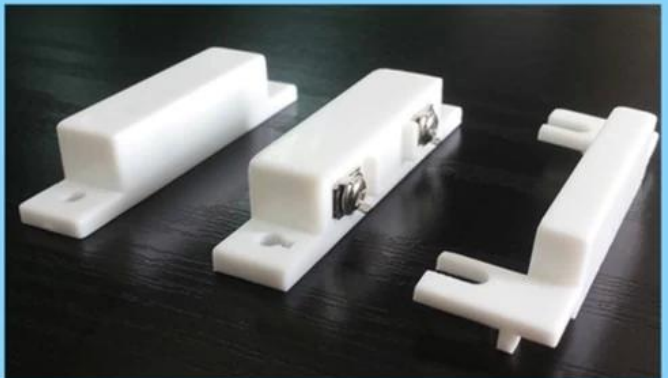
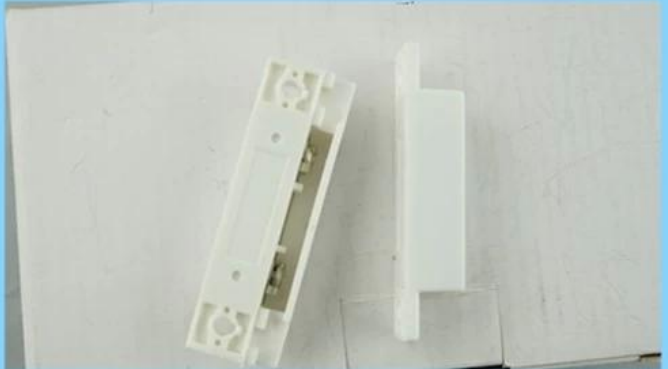
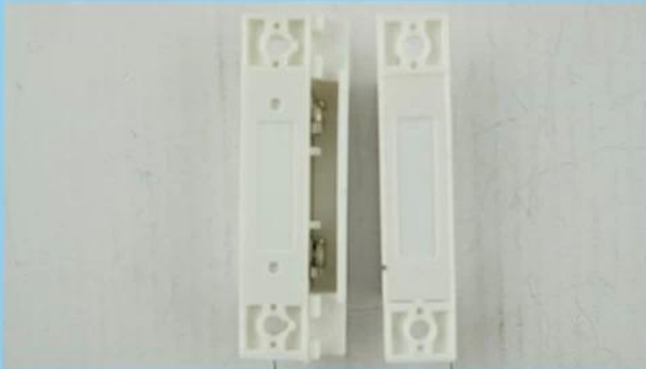
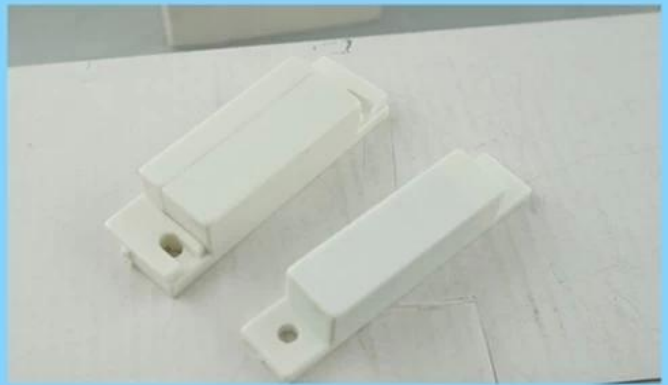
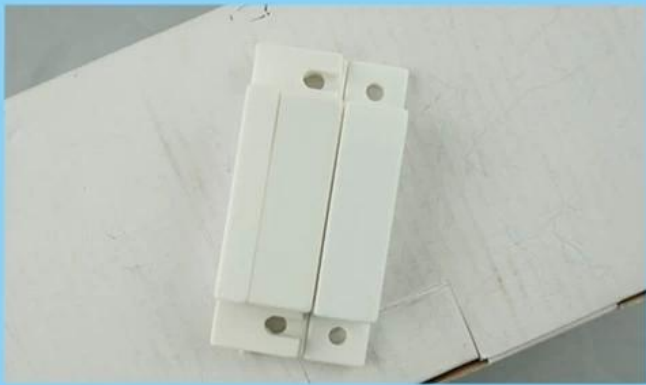
## • Parameter

**SMQT**

□□□□□	
□□□□□ □□□	□□□□ □□□□□ □□□□□□□□□□ □□□□□□□□ □□□□□
□□□□□	EB-131
□□□□	64 × 19 × 13 (□□□□)
□□□□ □□□	NO / NC (□□□□□□□□)
□□□□□	20 ± 5 (□□)
□□□□□□ □□□□	≤100V □□□□□□□□
□□□□□□□ □□□□□□ □□□□	≤500mA
□□□□□ □□□□□	≤10W
□□□□□□	□□□□□□□□) □□□□□ / □□□□□□□
□ □□□□□	□□□□□□ □□ □□□□□ □□□
□□□□□	ABS □□□□□□□□ □□□□□□□ □□□□□
□□□□□□ □□□□□□ □□□□□	-10 °C ~ 50 °C
□□□□□□□ □□□□□	24G

## • In-kind shooting

**SMQT**



● *Feature*

**SMQT**



White



Brown

2 Color optional

**Dimension:64×19×13(mm)**

**NO/NC mode optional**

**20±5(mm) gap**

**MAX voltage≤110VDC,MAX current≤500mA**

**Fireproof ABS material housing**

**Suitable for wooden door or window**

**Brown/ White color optional**

**Weight:24g**

**2 years quality warranty, welcoem OEM**

● ***Packaging & shipping***

**SMQT**

	□□□□□□□□ □□□□□□ □□□□□□
□□□□□□ □□□	EB-131 □□□□ □□□□□ □□□□□□□□□□ □□□□□□□□ □□□□□□
□□□□□□	800 □□□□□□□□ □□ □□□□ □□□□□□□□ □□□□
□□□□□□ □□□□□□ □□□	37 * 30 * 29 (mm)



## ● Office show

SMQT®



## ● Exhibition

SMQT®



2011 Brazil Fair



2012 Shenyang Fair



2013 Jinan Fair



2013 Shenzhen Fair



.....



2012 Shenyang Fair



2013 Shenyang Fair



2013 Shenzhen Fair



2015 Shenzhen Fair