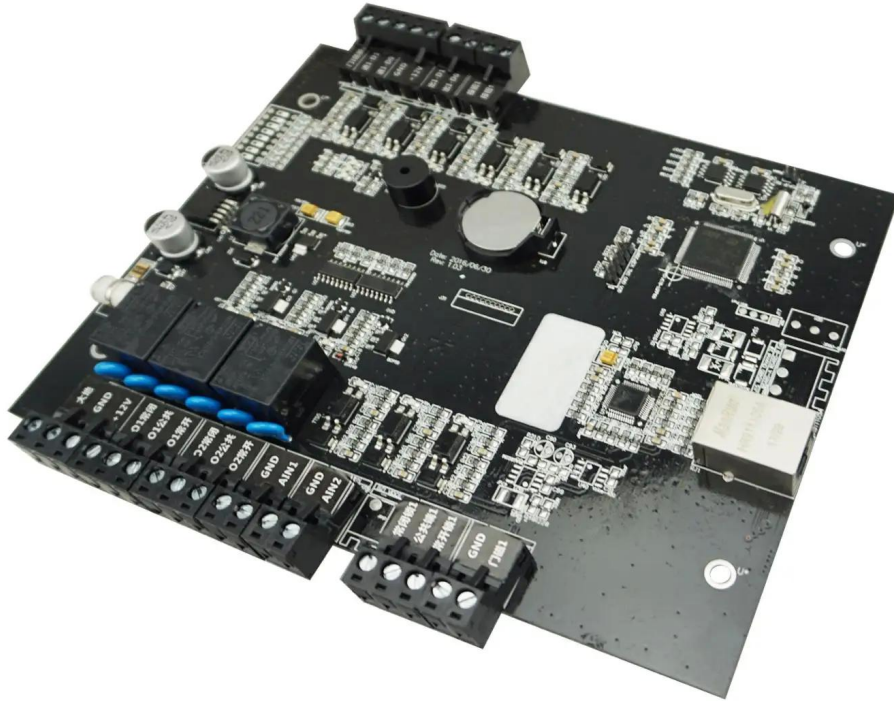


TCP / IP 対応 PC 対応

Single door access controller



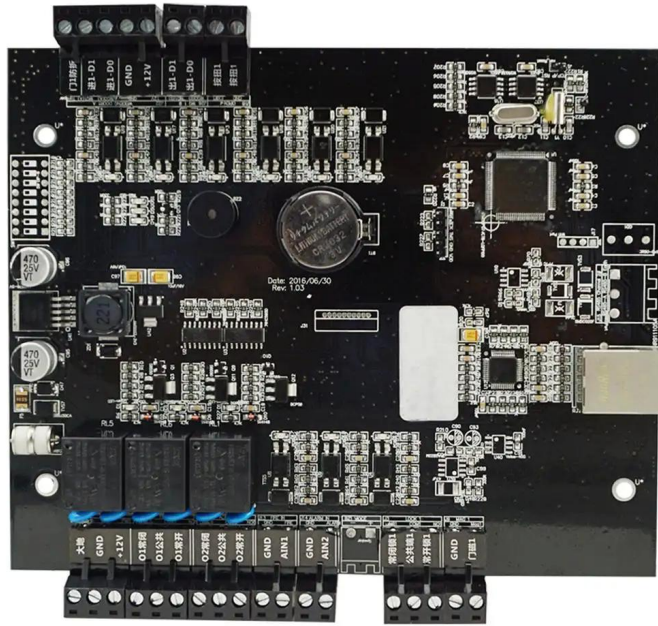
EA-811 仕様

対応	TCP / IP 対応 PC 対応
型番	EA-811
電源	9~14V DC
消費電力	<350mW
容量	20000 人
記憶容量	1000,000 人
構成	<p> 電源×2 端子WG26WG 34 IC×1 抵抗×1 抵抗×1 抵抗×1 RS485×2 TCP / IP×1 </p>
通信方式	TCP / IP / Rs485

□□□	□□□PC□□
□□□	170 * 155 *17□□
□□□	□□□□/□□□□□□/□□□□□□
□□□	PCB□
□□□	□□
□□□	0.7□□
□□□□□	□□□□□
□□□	2□□□
OEM □	□□OEM

EA-811□□□□□□

Compatible accessories introduction



Card reader× 2



Lock×1



Button× 1



Door sensor×1



siren ×1



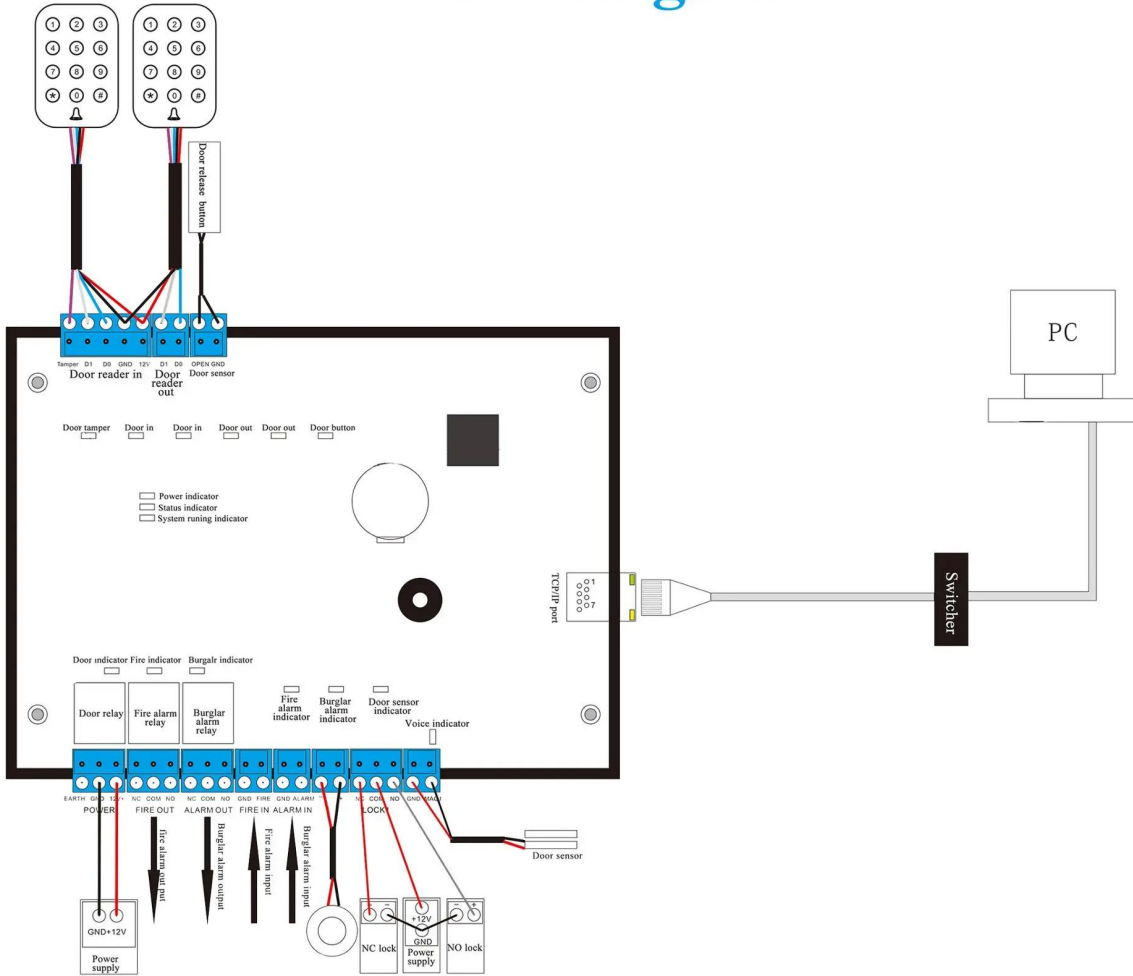
Fire alarm input /output



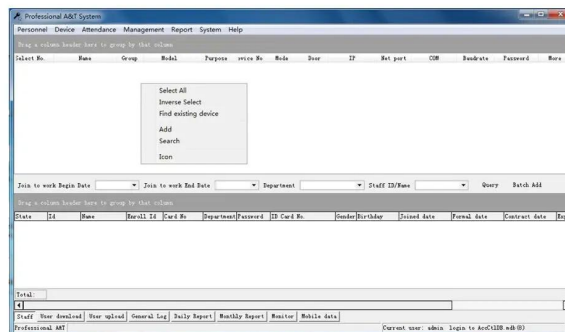
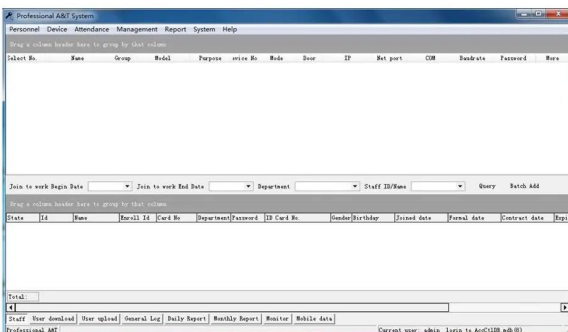
Burglar alarm input/output



Wire diagram



PC software

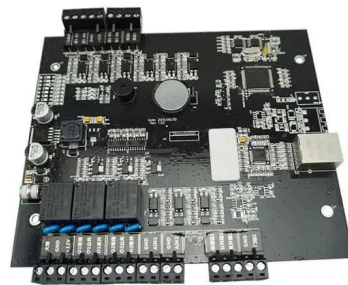


Optional accessories



Metal box power supply

Standard package



Single package size: 248*165*30mm

The number of full boxes: 46

FCL weight: 15kg

FCL size: 470*383*420mm

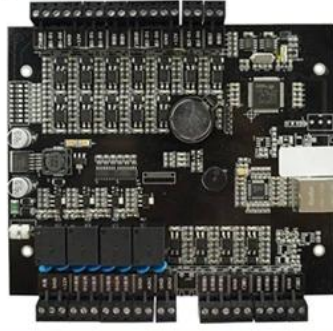
Welcome OEM



SMQT
铭汗科技



SMQT
铭汗科技



SMQT
铭汗科技

