

Wired magnetic contact sensor

Fireproof ABS material shell

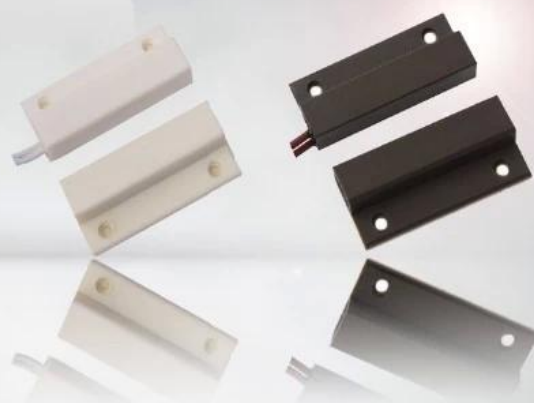
NO/NC model optional

Brown/white color optional

20±5(mm) gap distance

Suitable wooden door or window

14g weight



Parameter

SMQT

外形尺寸	41L * 34W * 6.5H(mm)
触点类型	NC / NO
安装间距	20±5mm
额定电压	≤100VDC
额定电流	≤500mA
额定功率	≤10W
适用环境	ABS塑料
工作电压	12V
工作电流	500mA
重量	14g

Introduction

SMQT

该传感器用于检测门窗的开关状态，工作电压为12V。

PRODUCT PICTURE



PRODUCT FEATURE



EB-132

Dimension:34×41×6.5(mm)

NO/NC mode optional

20±5(mm) distance gap

MAX voltage≤100VDC,MAX current≤500mA

Fireproof ABS material shell

White/Brown color optional

Suitable for wooden door or window

14g weight

2 years quality warranty,welcoem OEM



● Exhibition

SMQT®

2011 Brazil Fair



2012 Shenyang Fair



2013 Jinan Fair



2013 Shenzhen Fair



2012 Shenyang Fair



2013 Shenyang Fair



2013 Shenzhen Fair



2015 Shenzhen Fair

.....