

**Ang naka-wire na kisame na naka-mount PIR detector para sa panghihimasok sa system ng alarma**



**Pangunahing parameter ng EB-183**

Model: EB-183

Sukat:  $\Phi 106 * 36$  (mm)

Boltahe ng Operating: 12V DC

Kasalukuyang Pagkonsumo: 18mA

Enviroment Temp:  $-10^{\circ} C \sim + 50^{\circ} C$

Pagkuha ng Distansya:  $\Phi 8m$

Pag-alis ng Anghel:  $360^{\circ}$

Alarma Output: HINDI / NC

Mode ng Pag-install: naka-mount na kisame

Taas ng pag-install: mga 2.2m - 3.6m

Materyal: fireproof ABS pabahay

LED: ON / OFF (opsyonal)

Timbang: 116g



Tamper device

Pulse jumper

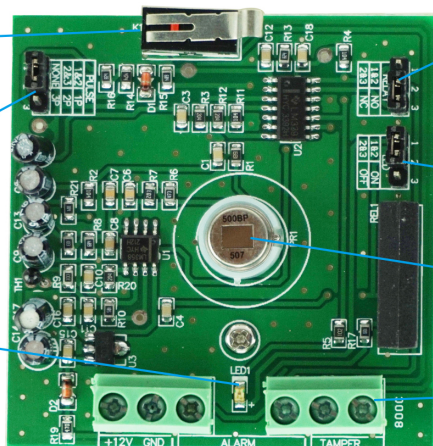
LED indicator

Output jumper

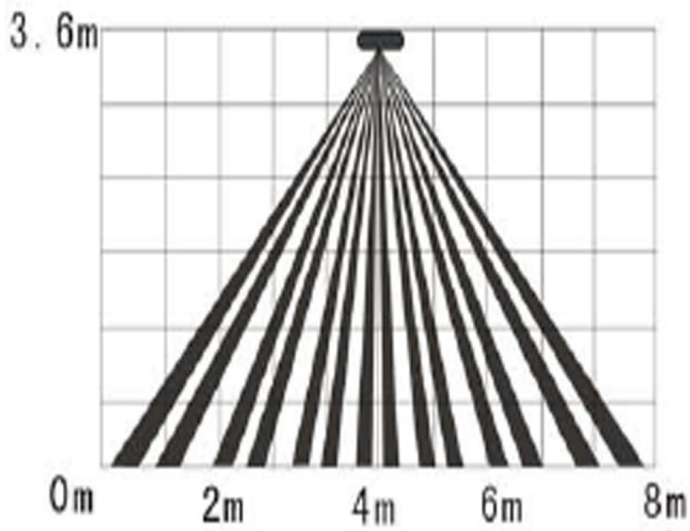
LED switch jumper

PIR Sensor

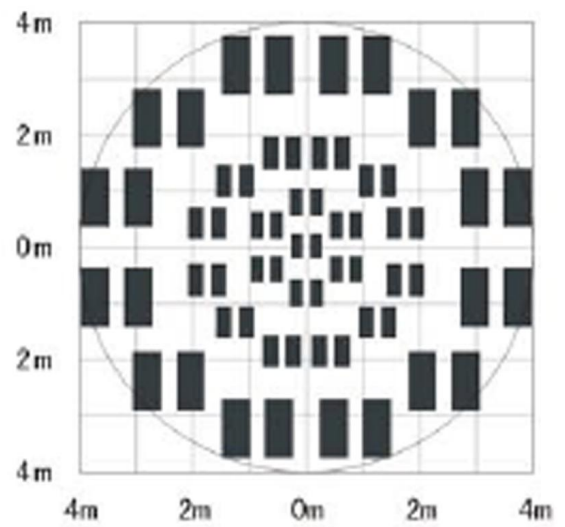
Wired port



## Detecting distance diagram:



Side view



Top view



Paano ang tungkol sa iba pang pagpipilian?

**SMQT**  
铭汗科技



**SMQT**  
铭汗科技



**SMQT**  
铭汗科技



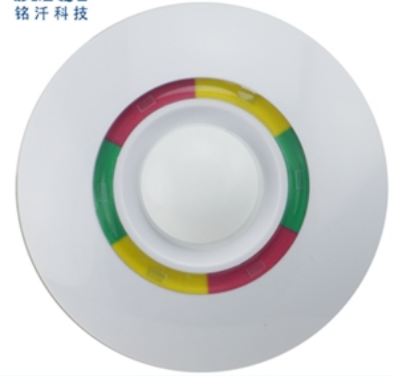
**SMQT**  
铭汗科技



**SMQT**  
铭汗科技



**SMQT**  
铭汗科技



**SMQT**  
铭汗科技



**SMQT**  
铭汗科技



**SMQT**  
铭汗科技



**SMQT**  
铭汗科技



**SMQT**  
铭汗科技



**SMQT**  
铭汗科技

