

Wired magnetic contact sensor

Fireproof ABS material shell

NO/NC model optional

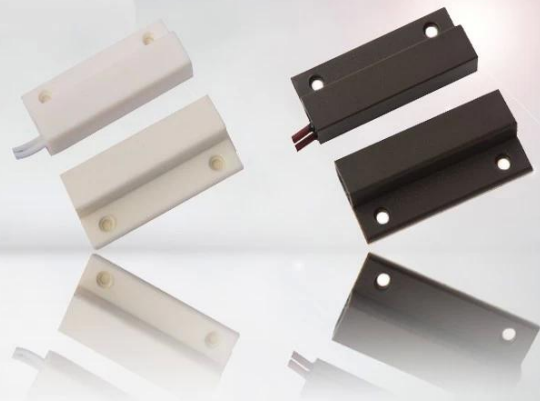
Brown/white color optoinal

20±5(mm) gap distance

Suitable wooden door or window

14g weight

SMQT®



• Parameter

SMQT®

parametro	
Pangalan ng Produkto	Wired pinto sensor
modelo	EB-132
sukat	34 × 41 × 6.5 (mm)
code mode	NO / NC (opsyonal)
puwang	20 ± 5 (mm)
Max boltahe	≤100V DC
Max kasalukuyang	≤500mA
Max rating	≤10W
kulay	Brown / White (opsyonal)
suit para sa	kahoy na pinto o window
materyal	Fireproof ABS pabahay
Paggawa temperatura	-10 °C ~ 50 °C
net timbang	14g

• In-kind shooting

SMQT®



• *Feature*

SMQT



EB-132

Dimension:34×41×6.5(mm)

NO/NC mode optional

20±5(mm) distance gap

MAX voltage≤100VDC,MAX current≤500mA

Fireproof ABS material shell

White/Brown color optional

Suitable for wooden door or window

14g weight

2 years quality warranty,welcoem OEM

•Packaging & shipping

SMQT

listahan packaging	
Pangalan ng Produkto	EB-132 Wired pinto sensor
Dami	1600 PC ng bawat karton
carton laki	38 * 30 * 30 (cm)
timbang	20kg



WE LOGISTICS



• Office show

SMQT



• Exhibition

SMQT

2011 Brazil Fair



2012 Shenyang Fair



2013 Jinan Fair



2013 Shenzhen Fair



.....



2012 Shenyang Fair



2013 Shenyang Fair



2013 Shenzhen Fair



2015 Shenzhen Fair