

Wired magnetic contact sensor

Fireproof ABS material shell

NO/NC model optional

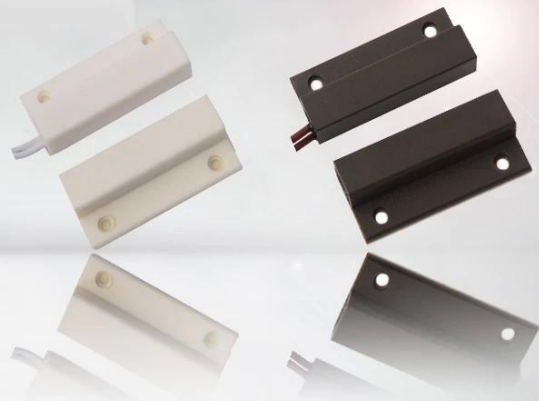
Brown/white color optional

20±5(mm) gap distance

Suitable wooden door or window

14g weight

SMQT®



• Parameter

SMQT®

Parameter	
Product name	Wired door sensor
Model	EB-132
Dimension	34×41×6.5(mm)
Code mode	NO/NC(optional)
Gap	20±5(mm)
Max voltage	≤100V DC
Max current	≤500mA
Max rating	≤10W
Color	Brown/White(optional)
Suit for	wooden door or window
Material	Fireproof ABS housing
Working temperature	-10 °C~50 °C
Net weight	14g

• In-kind shooting

SMQT®



• *Feature*

SMQT



EB-132

Dimension:34×41×6.5(mm)

NO/NC mode optional

20±5(mm) distance gap

MAX voltage≤100VDC,MAX current≤500mA

Fireproof ABS material shell

White/Brown color optional

Suitable for wooden door or window

14g weight

2 years quality warranty,welcoem OEM

•Packaging & shipping

SMQT

Packaging list	
Product name	EB-132 Wired door sensor
Qty	1600 pcs per carton
Carton size	38*30*30(cm)
Weight	20kg



WE LOGISTICS



• Office show

SMQT



• Exhibition

SMQT

2011 Brazil Fair



2012 Shenyang Fair



2013 Jinan Fair



2013 Shenzhen Fair



2012 Shenyang Fair



2013 Shenyang Fair



2013 Shenzhen Fair



2015 Shenzhen Fair



.....