

EB-160



EB-160

電壓:	12V
電流:	2
型號:	EB-160
顏色:	2
音頻:	115 / 120dB ( )
尺寸:	110 * 110 * 55mm
重量:	3
功能:	<b>COM, Tone1, Tone2</b>
電流:	400 / 1000mA
電壓:	DC12V / 24V ( )
材料:	ABS, PC, PMMA
安裝:	ABS
重量:	0.4kg
電流:	2
OEM:	OEM

EB-160



1. Wired alarm siren for fire & burglar alarm system with 2 tones

**2. Power supply DC12V, DC 24V need OEM**

**3. Rated Current: 700/1000 mA**

**4. Output sound: 2 tones adjustable**

**5. Sound pressure: 115db/120db(2 tones)**

6. Magnet: Ferrite

**7. Wires: 3 wires**

**8. Suitable for all kinds of fire & Burglar alarming system**

9. Fireproof ABS housing material

**10. 2 years warranty , welcome OEM**





**2 Alarm tones**  
**115dB/120dB alarm sound pressure**



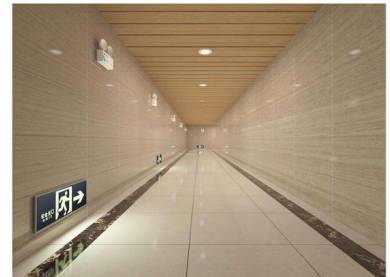
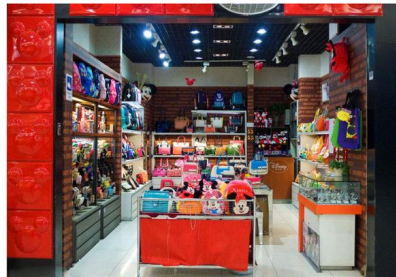
**Access control system**



**Burglar alarm system**



**Fire alarm system**



**SMQT**  
铭汗科技



**SMQT**  
铭汗科技



**SMQT**  
铭汗科技



**SMQT**  
铭汗科技



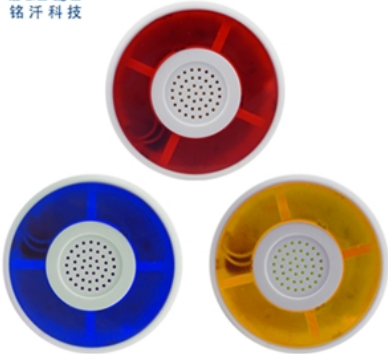
**SMQT**  
铭汗科技



**SMQT**  
铭汗科技



**SMQT**  
铭汗科技



**SMQT**  
铭汗科技



**SMQT**  
铭汗科技

