

Wired magnetic contact sensor

Fireproof ABS material shell

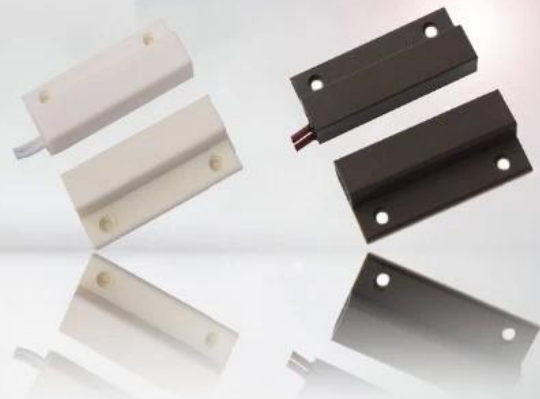
NO/NC model optional

Brown/white color optional

20±5(mm) gap distance

Suitable wooden door or window

14g weight



Parameter

SMQT

外形尺寸	41L ***** 6.5H 34W (mm)
触点形式	NC / NO
安装孔间距	20 ± 5 (mm)
额定电压	≤100VDC
额定电流	≤500mA
额定功率	≤10W
适用材料	ABS 塑料
颜色	白色 / 棕色
重量	14g

Introduction

SMQT

该传感器采用ABS材料外壳，具有防火、防冲击、防腐蚀等特点。适用于木质门、窗、柜等。工作电压为12V，触点形式为NO/NC。重量为14g，安装方便。

PRODUCT PICTURE



PRODUCT FEATURE



EB-132

Dimension:34×41×6.5(mm)

NO/NC mode optional

20±5(mm) distance gap

MAX voltage≤100VDC,MAX current≤500mA

Fireproof ABS material shell

White/Brown color optional

Suitable for wooden door or window

14g weight

2 years quality warranty,welcoem OEM



● Exhibition

SMQT®

2011 Brazil Fair



2012 Shenyang Fair



2013 Jinan Fair



2013 Shenzhen Fair



2012 Shenyang Fair



2013 Shenyang Fair



2013 Shenzhen Fair



2015 Shenzhen Fair

.....