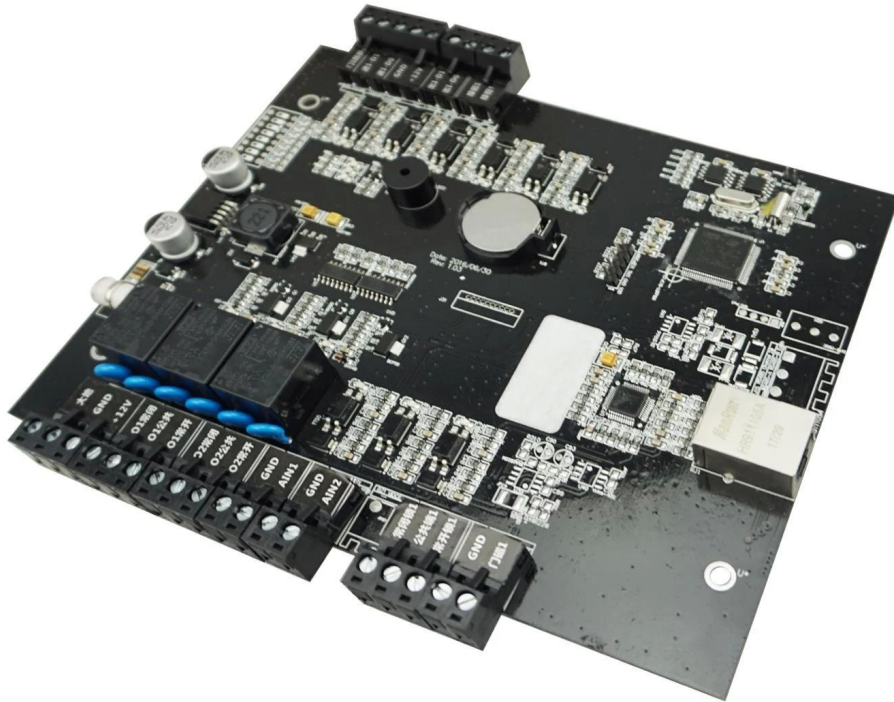
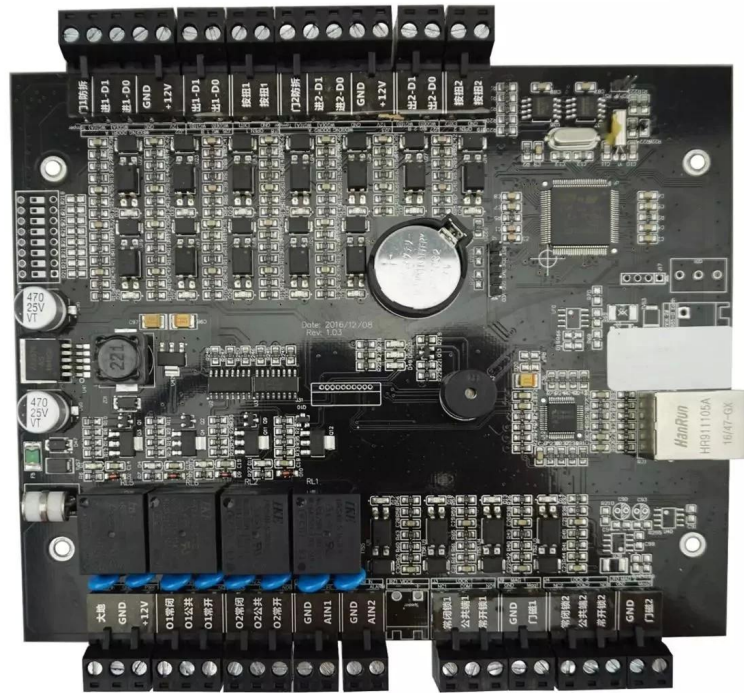


Single door access controller



□□□□□ □□□	□□□□ □□ □□□□ □□□□ □□□□ TCP / IP □□□□□□ □□
□□□□□ □□□□:	DC 9V ~ 14V
□□□□□ □□□□□	□□□□□□ & lt350 □MA
□□□□□□ □□□□□□ □□□ 1 □□□□□ □□□□	
□□□□□□ □□□□□ 100000 □ 20000 □□□□□□□□ □□□□	
□□□□□ TCP / IP (R485 □□□□□□)	

Compatible accessories introduction



Card reader× 4



Lock×2



Button× 2



Door sensor×2



siren ×1



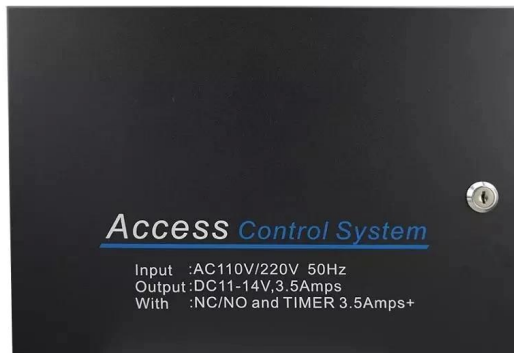
Fire alarm input/output



Burglar alarm input/ouput

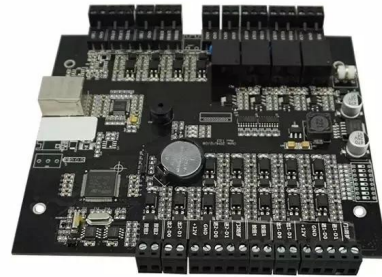


Optional accessories



Metal box power supply

Standard package



Single package size: 248*165*30mm

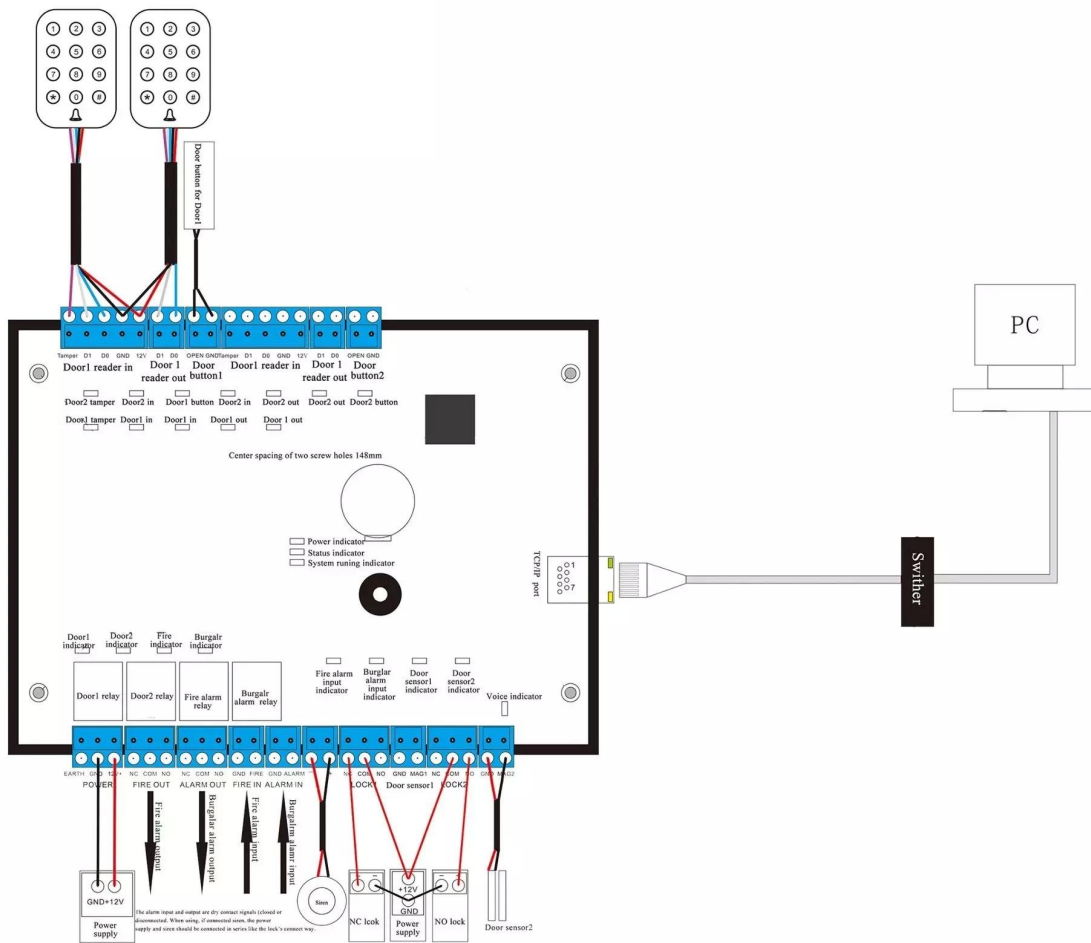
The number of full boxes: 46

FCL weight: 15kg

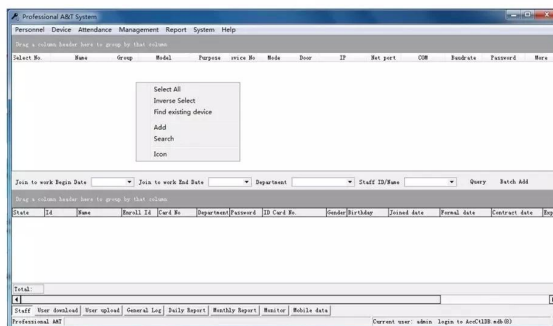
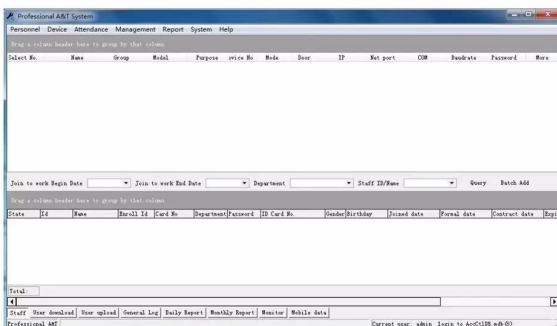
FCL size: 470*383*420mm

Welcome OEM

Wire diagram



PC software



□□□□□ □□□ □□□:

