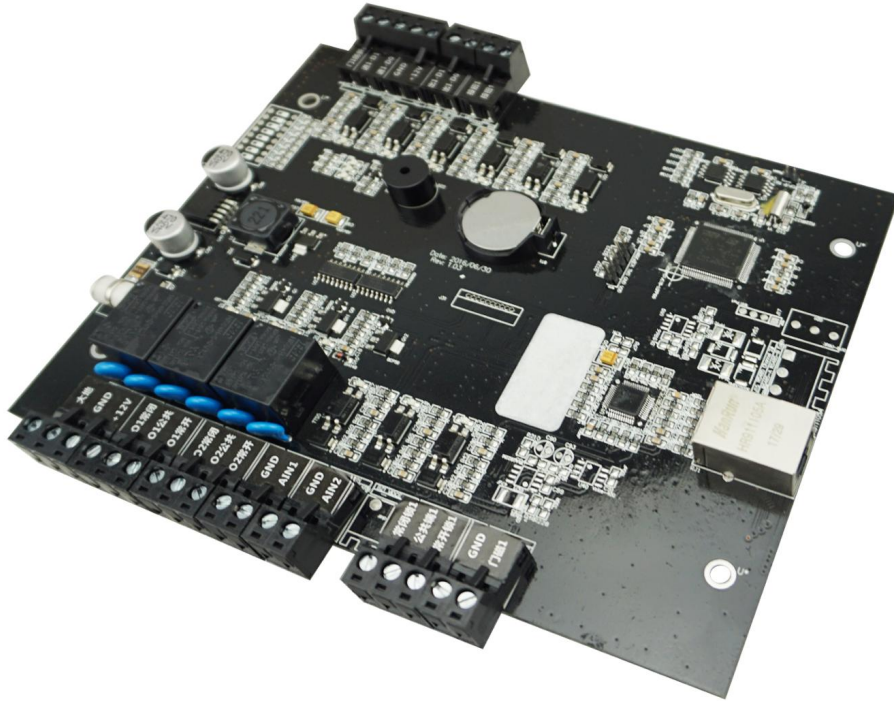


TCP / IP

Single door access controller



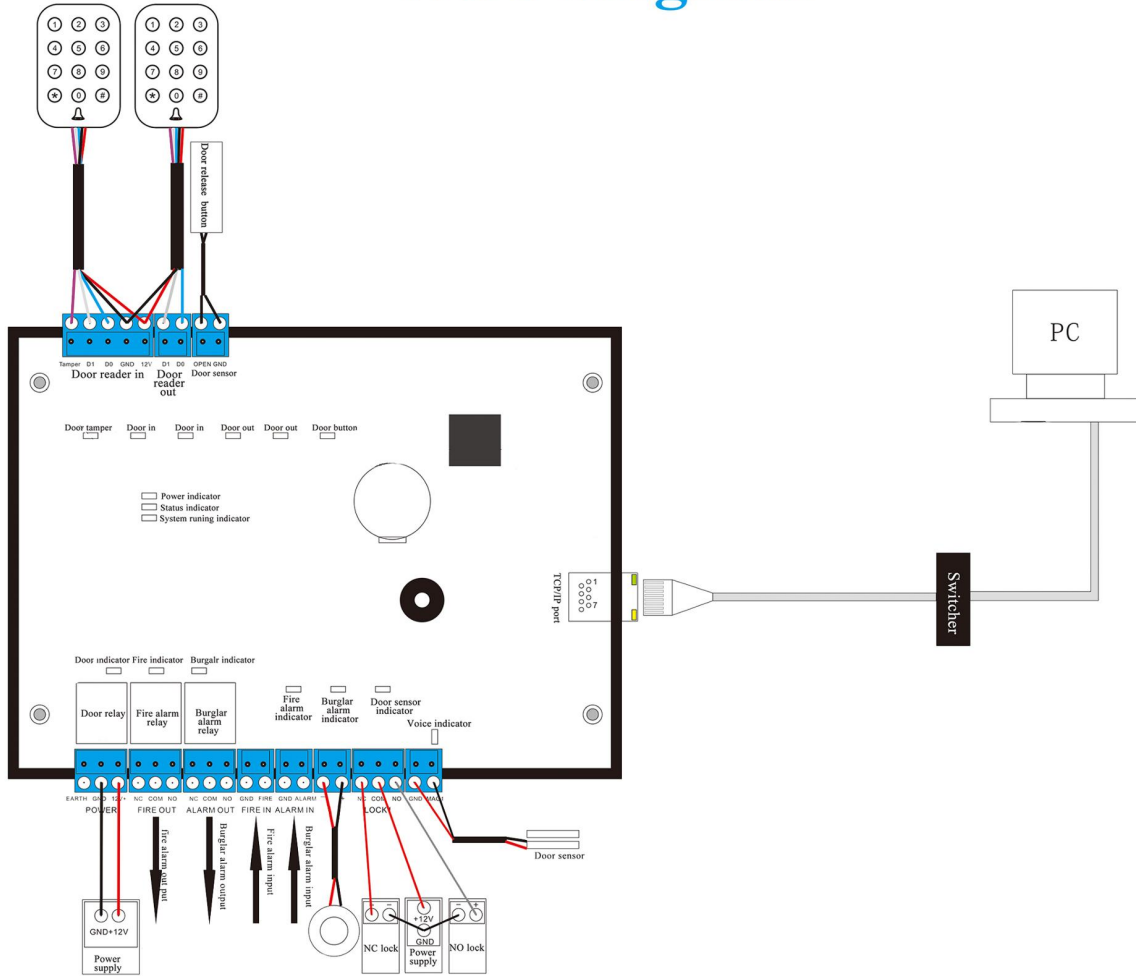
EA-811

□□□□	TCP / IP
□□□	EA-811
□□□□	9~14V DC
□□□□	<350
□□□□	20000
□□□□	1000,000
□□□	×2 WG26 WG 34 ×1 ×1 ×1 ×1 RS485×2 TCP / IP×1
□□□□	TCP / IP / Rs485

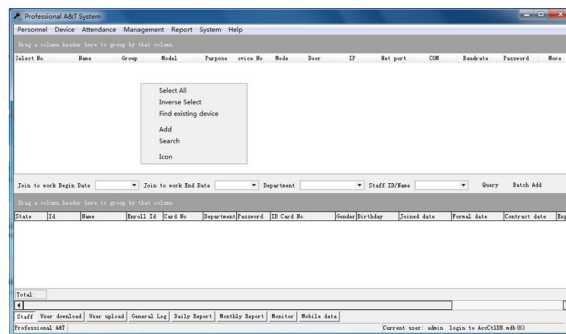
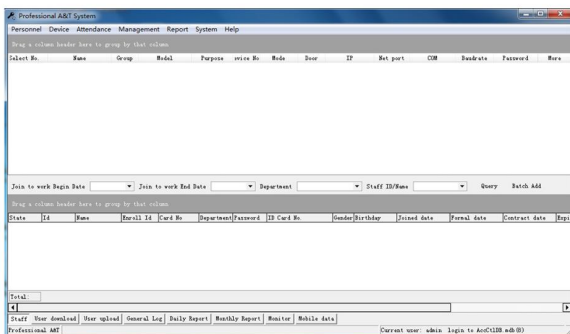
□□□	□□□PC□□
□□□	170 * 155 *17□□
□□□	□□□□/□□□□□□/□□□□□□
□□□	PCB□
□□□	□□
□□□	0.7□□
□□□□□	□□□□□
□□□	2□□□
OEM □	□□OEM

EA-811□□□□□□

Wire diagram



PC software

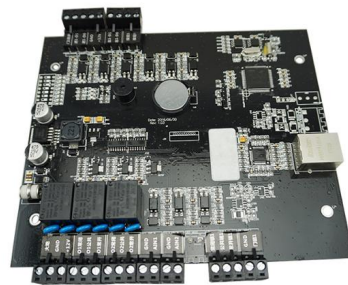


Optional accessories



Metal box power supply

Standard package



Single package size: 248*165*30mm

The number of full boxes: 46

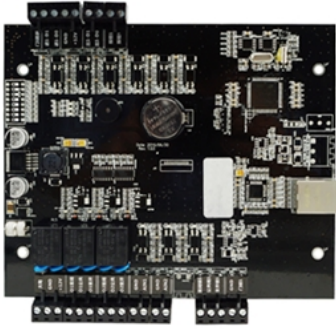
FCL weight: 15kg

FCL size: 470*383*420mm

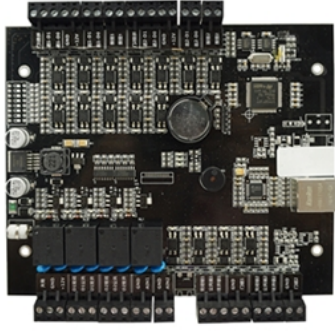
Welcome OEM



SMQT
铭汗科技



SMQT
铭汗科技



SMQT
铭汗科技

