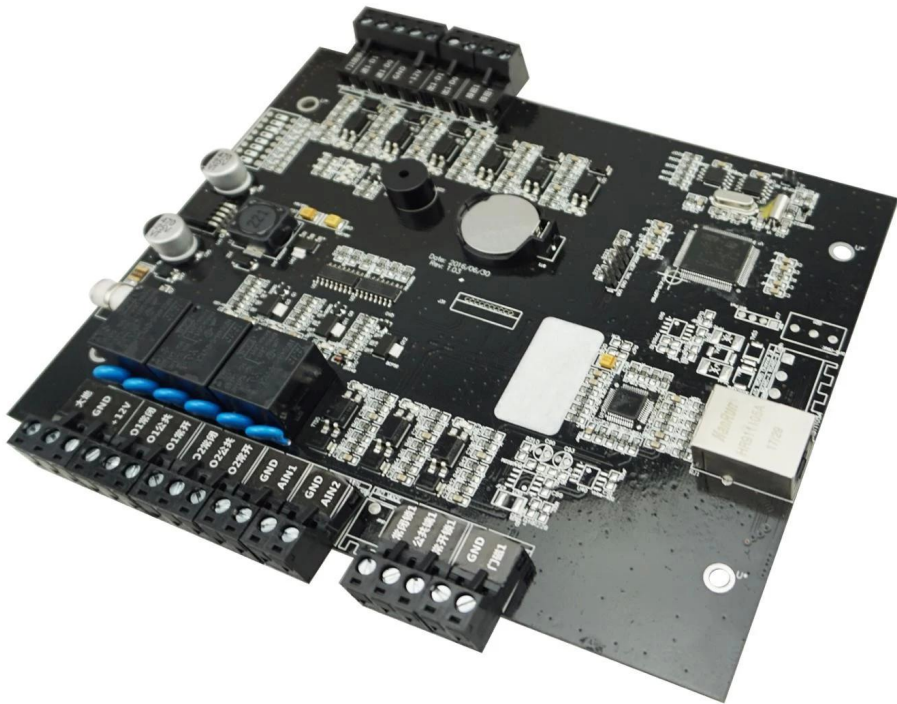
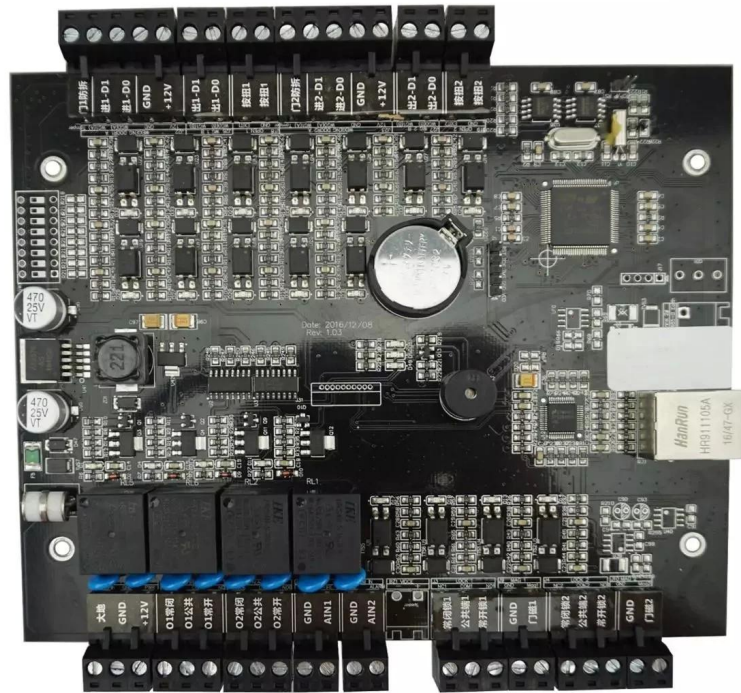


Single door access controller



□□□□	TCP / IP□□□□□□□□□□
□□□	DC 9V~14V
Workingcurrent	<350□
□□□□1□□□	
20000□□□□□□100,000□□□□□	
TCP / IP□□□R485□	

Compatible accessories introduction



Card reader× 4



Lock×2



Button× 2



Door sensor×2



siren ×1



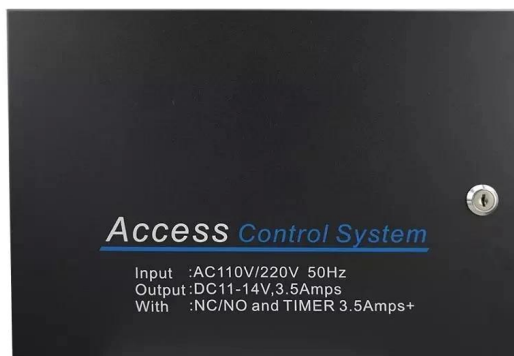
Fire alarm input/output



Burglar alarm input/ouput

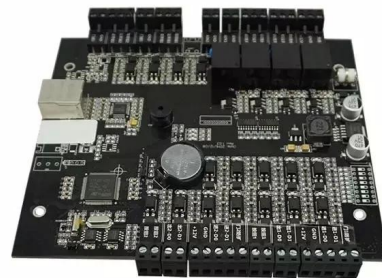


Optional accessories



Metal box power supply

Standard package



Single package size: 248*165*30mm

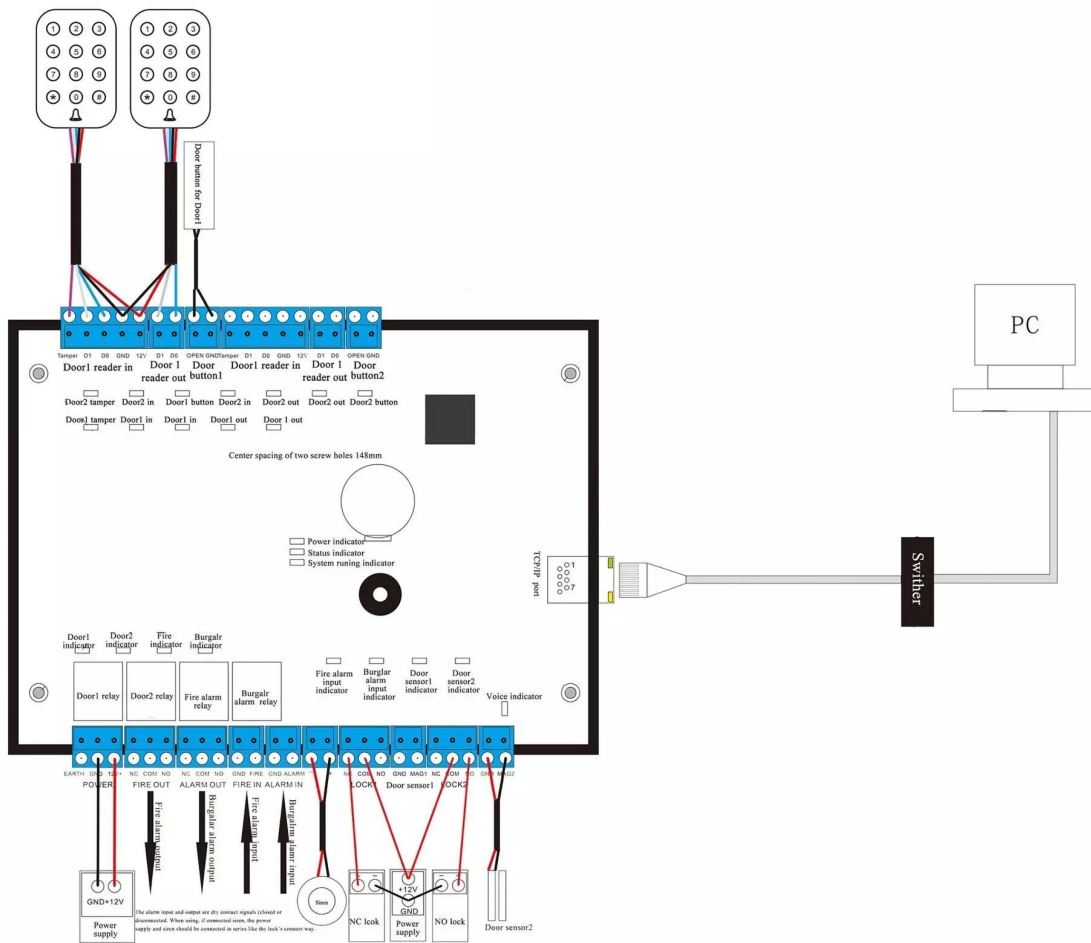
The number of full boxes: 46

FCL weight: 15kg

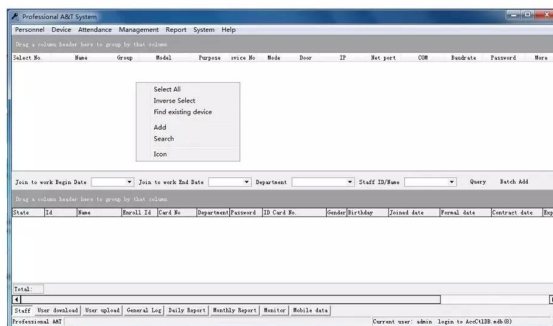
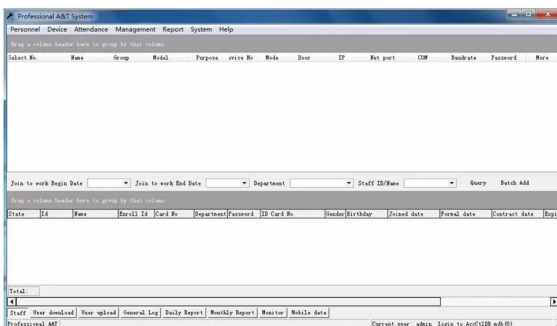
FCL size: 470*383*420mm

Welcome OEM

Wire diagram



PC software



□□ □□□

