

Wired magnetic door sensor

Fireproof ABS material housing

20±5(mm) gap

Max voltage≤100V DC,Max current≤500mA

Use for wooden door or window

White/Black color optional

SMQT



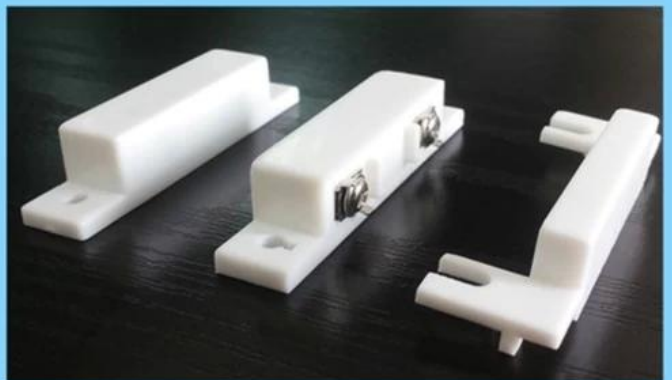
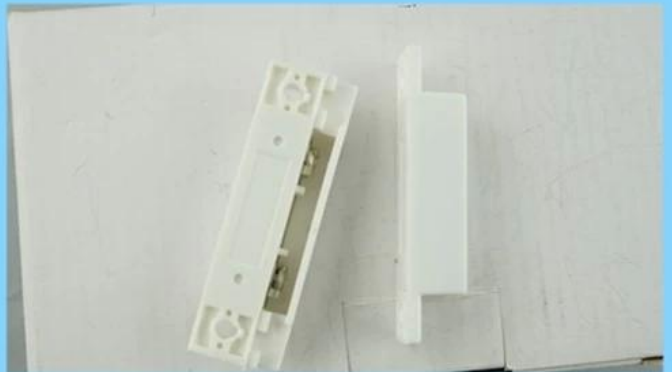
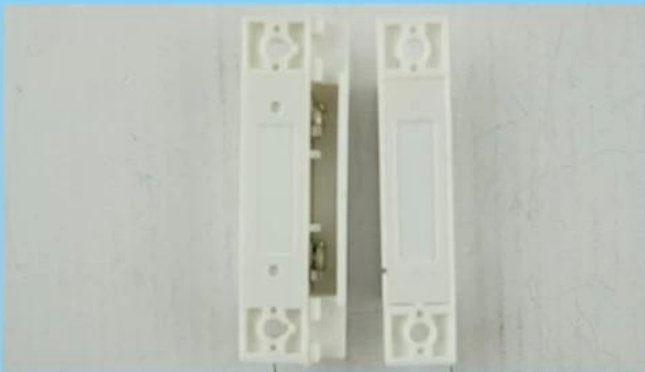
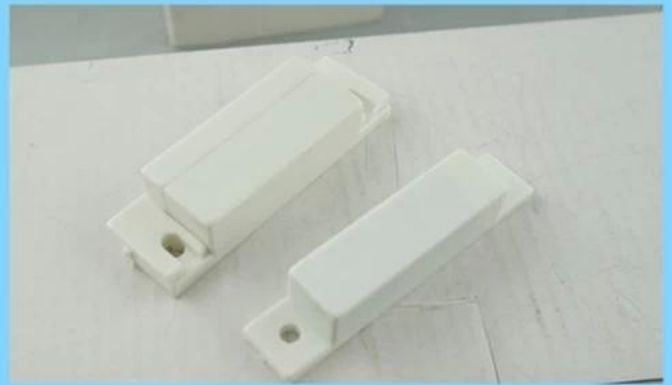
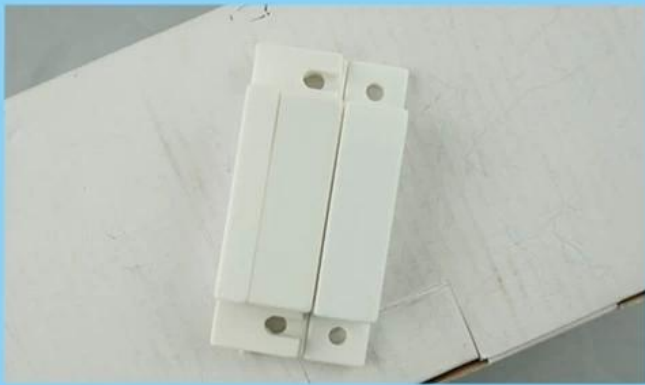
• Parameter

SMQT

□□	
□□□□	□□□□□□□□
□□	EB-131
□□	64×19×13□mm□
□□□□	NO / NC□□□□
□□	20±5□mm□
□□□□	≤100VDC
□□□□	≤500mA
□□□□□	≤10W
□□	□□/□□□□□□
□□	□□□□
□□	□□ABS□□
□□□□	-10°C□50°C
□□	24g

• In-kind shooting

SMQT



● *Feature*

SMQT



White



Brown

2 Color optional

Dimension:64×19×13(mm)

NO/NC mode optional

20±5(mm) gap

MAX voltage≤110VDC,MAX current≤500mA

Fireproof ABS material housing

Suitable for wooden door or window

Brown/ White color optional

Weight:24g

2 years quality warranty, welcoem OEM

• ***Packaging & shipping***

SMQT

	□□□□
□□□□	EB-131 □□□□□□□□
□□	□□800□
□□□□	37 * 30 * 29□cm□



● Office show

SMQT®



● Exhibition

SMQT®

2011 Brazil Fair



2012 Shenyang Fair



2013 Jinan Fair



2013 Shenzhen Fair



2012 Shenyang Fair



2013 Shenyang Fair



2013 Shenzhen Fair



2015 Shenzhen Fair



.....