

Wired magnetic contact sensor

Fireproof ABS material shell

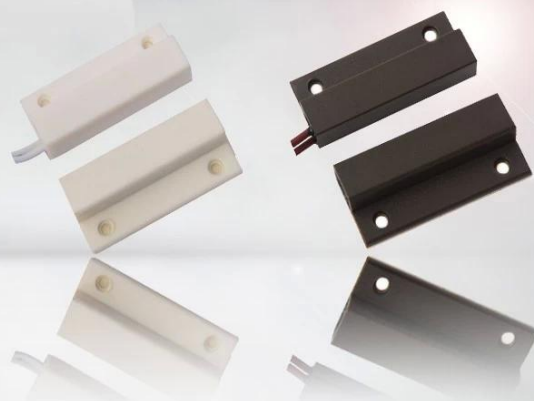
NO/NC model optional

Brown/white color optional

20±5(mm) gap distance

Suitable wooden door or window

14g weight



Parameter



Model	EB-132
Dimensions	34×41×6.5mm
Configuration	NO / NC
Gap distance	20±5mm
Operating voltage	≤100VDC
Operating current	≤500mA
Power consumption	≤10W
Material	ABS
Temperature range	-10°C~50°C
Weight	14g

In-kind shooting





• *Feature*

SMQT



EB-132

Dimension:34×41×6.5(mm)

NO/NC mode optional

20±5(mm) distance gap

MAX voltage≤100VDC,MAX current≤500mA

Fireproof ABS material shell

White/Brown color optional

Suitable for wooden door or window

14g weight

2 years quality warranty,welcoem OEM

•Packaging & shipping

SMQT

	□□□□
□□□□	EB-132 □□□□□□□□
□□	□□1600□
□□□□	38 * 30 * 30□cm□
□□	20kg



WE LOGISTICS



• Office show

SMQT



• Exhibition

SMQT

2011 Brazil Fair



2012 Shenyang Fair



2013 Jinan Fair



2013 Shenzhen Fair



2012 Shenyang Fair



2013 Shenyang Fair



2013 Shenzhen Fair



2015 Shenzhen Fair

.....