

360 degree DC12V Ceiling mounted PIR motion sensor in alarm system

Product Description



Specification	
Product name	360 degree DC12V Ceiling mounted PIR motion sensor in alarm system
Model	EB-175
Size	Ø135 * 30(mm)
Working voltage	12~24V DC
Working Current	18mA(DC12V)
Detecting angle	360°
Self-testing time	60S
Working temperature	-10°C~50°C
Detecting speed	0.2~7m/sec
Install Height	2.2~6m
Storage temperature	-25°C~65°C
PIR Feature	Infrared sensro type :Dual elements PIR sensor Auto temperature compensation:NIC compensation Detecting distance:8~10m Detecting angle:360°
Alarm indicator	Red LED Light(close if need)
Alarm output	NC ,12V DC,100mA
Anti-tamper switch	NC ,12V DC,100mA

Operating humidity	95%
Color	White
Weight	0.1kg

Product Feature

what features of our 360 degree DC12V Ceiling mounted PIR motion sensor?

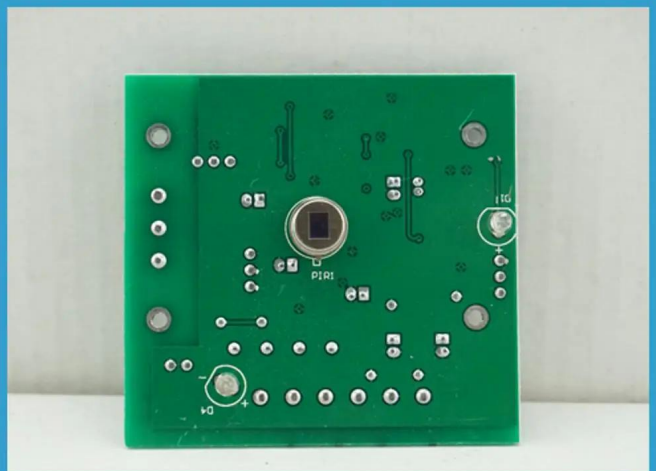
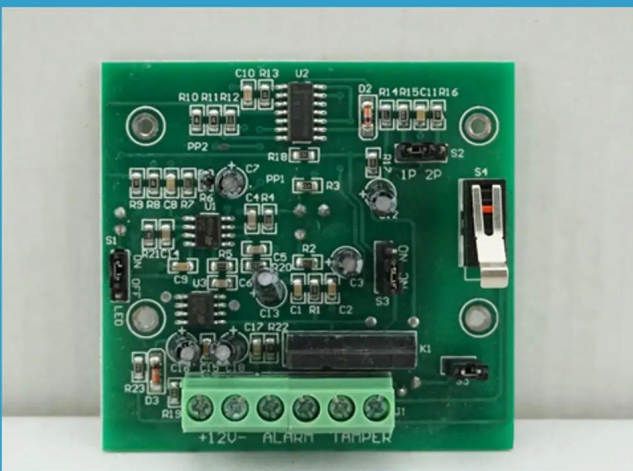


Features
The product is passive infrared detector with high stability. It has adopted advanced technology in signal processing and provided superhigh detection ability and anti error alarm.

The detector will detect movement of human automatically when intruder passes through the detection area, and it will send out alarm signal to alarm host if there is movement.
The product is suitable for the safety of residential house, villas, factories, markets, warehouses, office building etc.
Passive infrared Motion detector, with perfect streamline surface design.
Adopted dual element infrared sensor, digital processing technology.
High reliability from perfect technical stability and design.

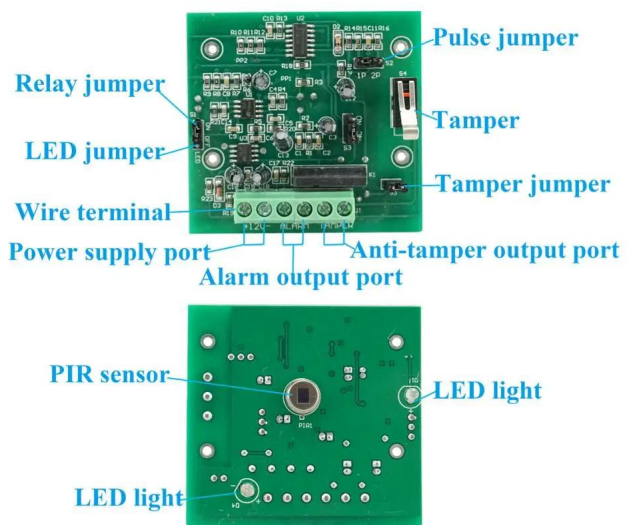
Product Display

IN-KIND SHOOTING

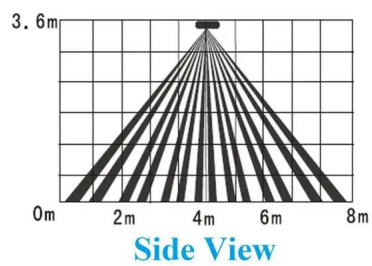
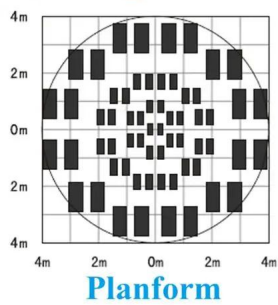


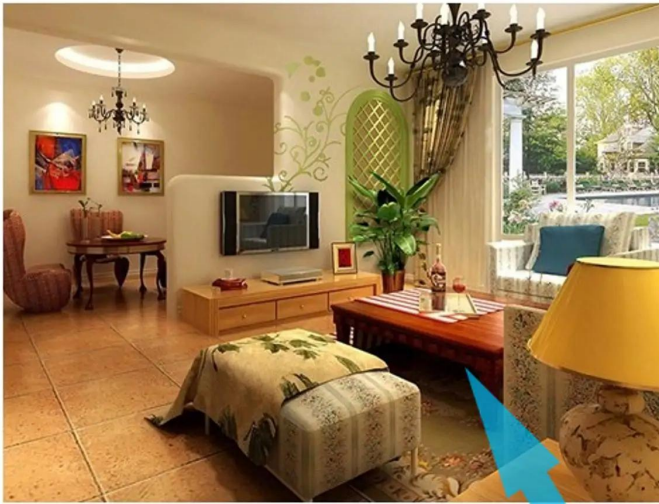
Application

APPLICATION



Detecting Area View:





This model wired motion detector product is widely use in all kinds of burglar alarm system, Such as Villa ,Home ,Factory, Warehouse, Office, Bank etc.

SHOW CASES

SMQT® 深圳市铭汗科技有限公司
SHENZHEN MINGQIAN TECHNOLOGY CO.,LTD



<https://eis.en.alibaba.com>

SMQT® 深圳市铭汗科技有限公司
SHENZHEN MINGQIAN TECHNOLOGY CO.,LTD



<https://eis.en.alibaba.com>

SMQT® 深圳市铭汗科技有限公司
SHENZHEN MINGQIAN TECHNOLOGY CO.,LTD



<https://eis.en.alibaba.com>

SMQT® 深圳市铭汗科技有限公司
SHENZHEN MINGQIAN TECHNOLOGY CO.,LTD



<https://eis.en.alibaba.com>

SMQT® 深圳市铭汗科技有限公司
SHENZHEN MINGQIAN TECHNOLOGY CO.,LTD



<https://eis.en.alibaba.com>

SMQT® 深圳市铭汗科技有限公司
SHENZHEN MINGQIAN TECHNOLOGY CO.,LTD



<https://eis.en.alibaba.com>

SMQT® 深圳市铭汗科技有限公司
SHENZHEN MINGQIAN TECHNOLOGY CO.,LTD



<https://eis.en.alibaba.com>

SMQT® 深圳市铭汗科技有限公司
SHENZHEN MINGQIAN TECHNOLOGY CO.,LTD



<https://eis.en.alibaba.com>

SMQT® 深圳市铭汗科技有限公司
SHENZHEN MINGQIAN TECHNOLOGY CO.,LTD



<https://eis.en.alibaba.com>

Packaging & Shipping

Payment & Transport



1. Powerful R&D team can provide customized features and functions, referring to different

requirements from different customers.

2. Payment term: T/T, Western Union, and Paypal.

3. 24 hours after-sale service is provided with the professional technical support and training.

4. Our artist team can provide Neutral pictures for distributor's website promotion.

5. Optional shipping service: couriers (UPS, DHL, TNT, and Fedex), by sea, and by air.

Company Information

OFFICE SHOW



CUSTOMERS



EXHIBITION

2011 Brazil Fair



2012 shen yang Fair



2013 Jinan Fair



2013 Shenzhen Fair



2012 shen yang Fair



2013 shen yang Fair



2013 Shenzhen Fair



2015 Shenzhen Fair



CERTIFICATION



FAQ

FAQ

Q:Can I have a sample order?

A:Yes, we are willing to offer trial sample order to you for quality test. Mixed samples are acceptable.

Q:What is the lead time?

A:Sample needs 1-3 working days, mass production time needs 10-15 working days.

Q:What is your MOQ?

A:No MOQ limit.The more quantity the more discounts.

Q:How do you ship the goods and how long does it take arrive?

A:The sample will be sent to you by optional shipping service (couriers, air, and sea),or appointed by buyer,7-15 days.

Q:How will we proceed the order if I have logo to print?

A:Firstly, we will prepare artwork for visual confirmation. If the color and position are right, we would make sampling firstly from silk print factory and take picture for your second confirmation before mass production.

***How to contact us?
Click the enter send us inquiry below.***