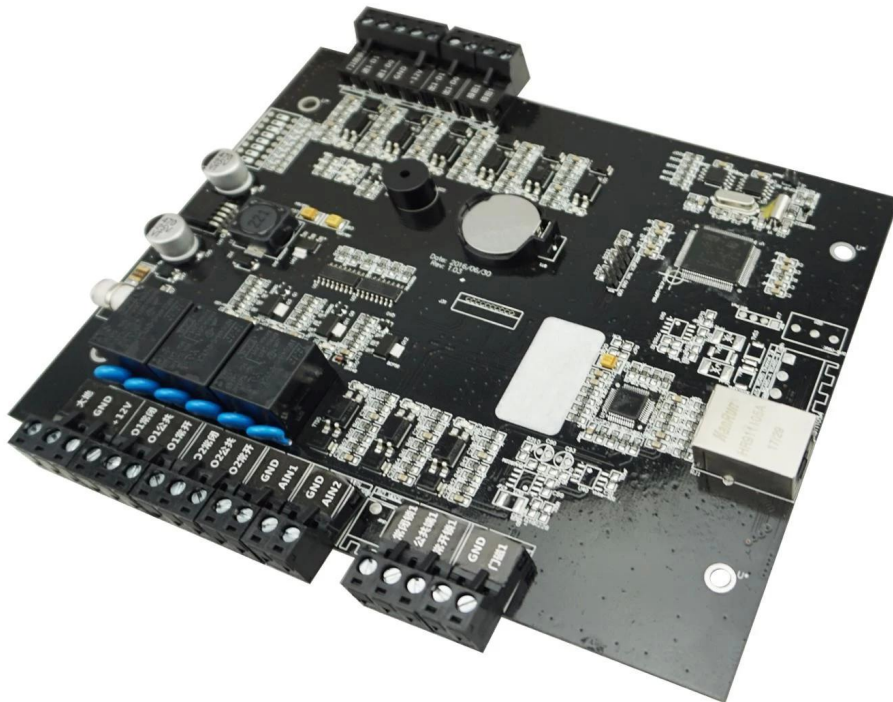
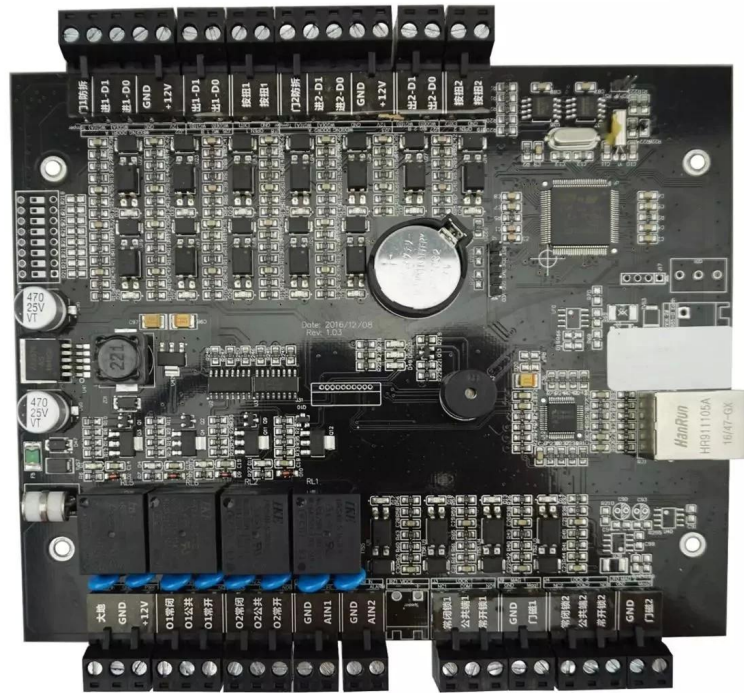


# Single door access controller



Nombre del producto	Controlador de acceso de una sola puerta TCP / IP con dos direcciones
Fuente de alimentación:	DC 9V ~ 14V
Corriente de trabajo	& lt; 350mA
Puede gestionar 1 puerta de entrada y salida.	
Capacidad de 20000 usuarios, 100,000 registros de eventos.	
Comunicación TCP / IP (R485 opción)	

# Compatible accessories introduction



Card reader× 4



Lock×2



Button× 2



Door sensor×2



siren ×1



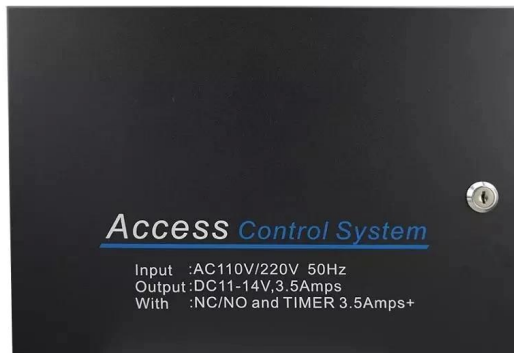
Fire alarm input/output



Burglar alarm input/output

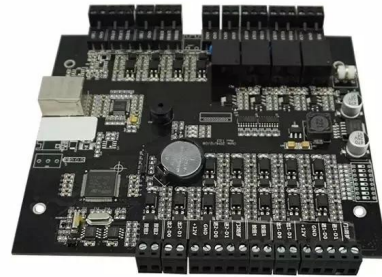


# Optional accessories



**Metal box power supply**

# Standard package



**Single package size: 248\*165\*30mm**

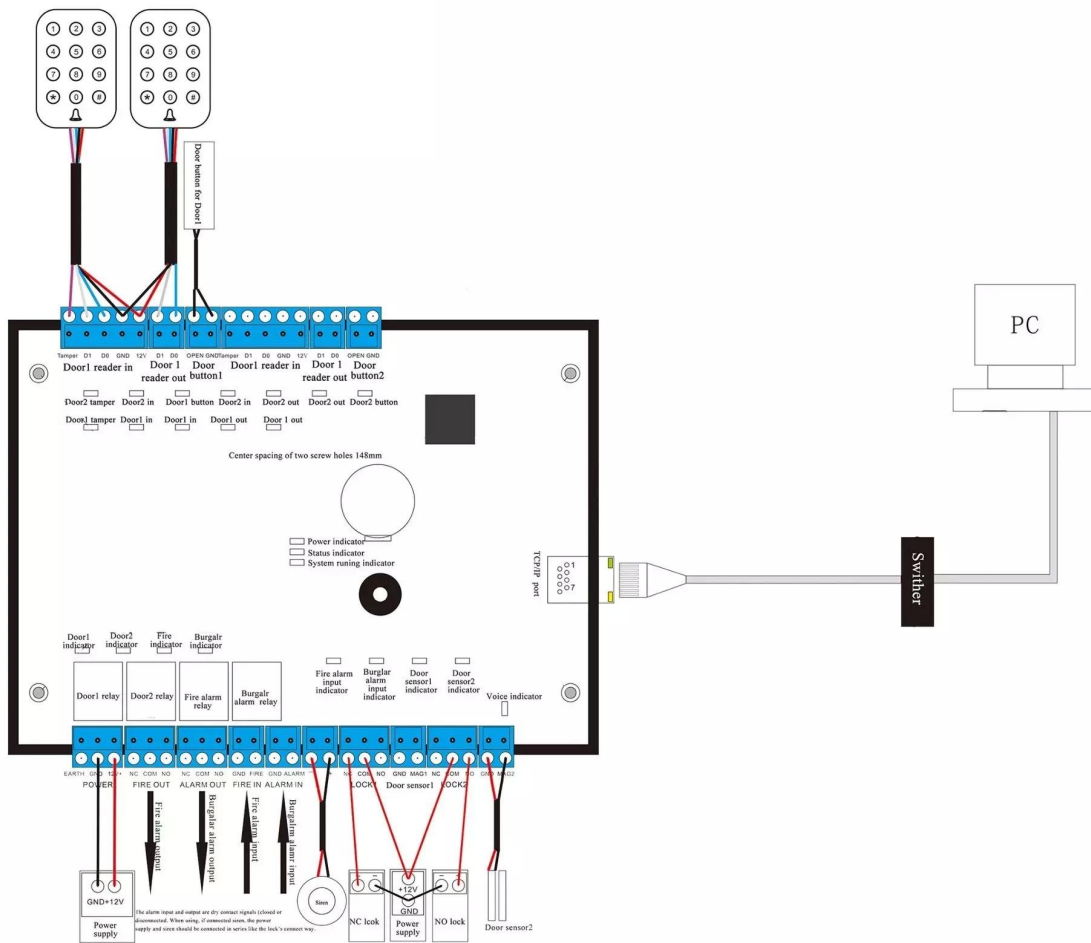
**The number of full boxes: 46**

**FCL weight: 15kg**

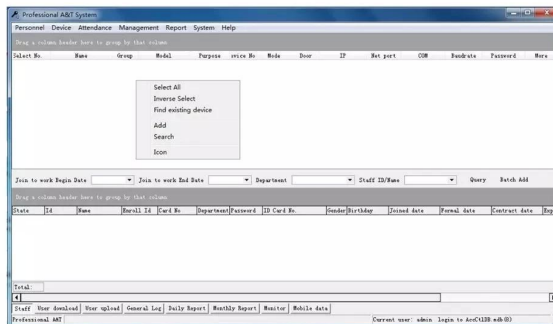
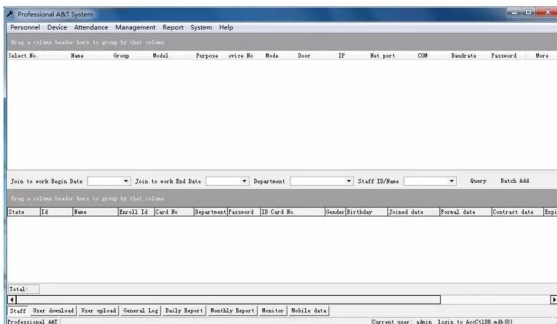
**FCL size: 470\*383\*420mm**

***Welcome OEM***

# Wire diagram



# PC software



## RELACIONADO PRODUCTO:

