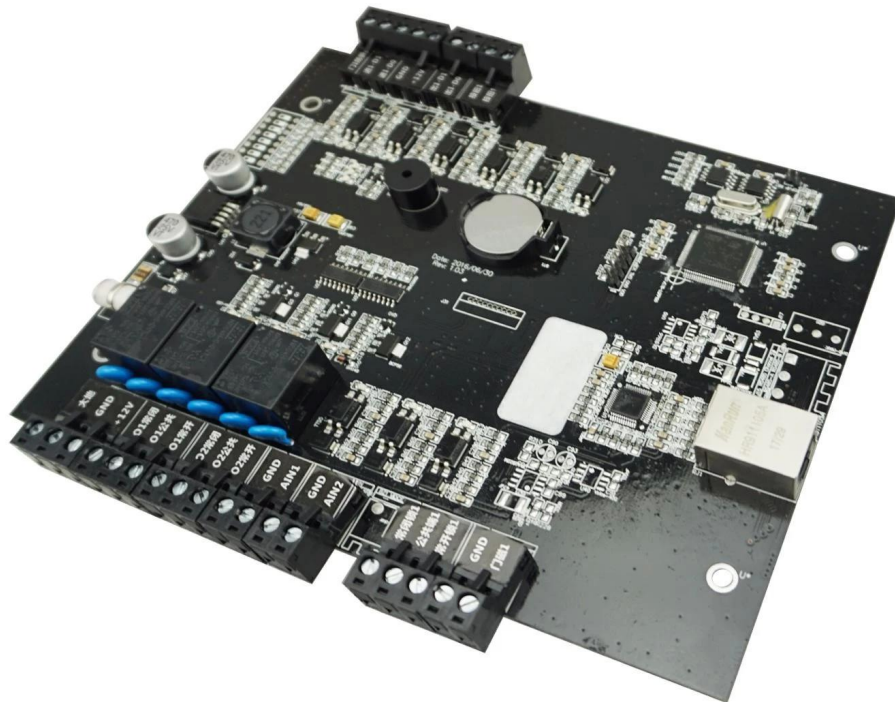
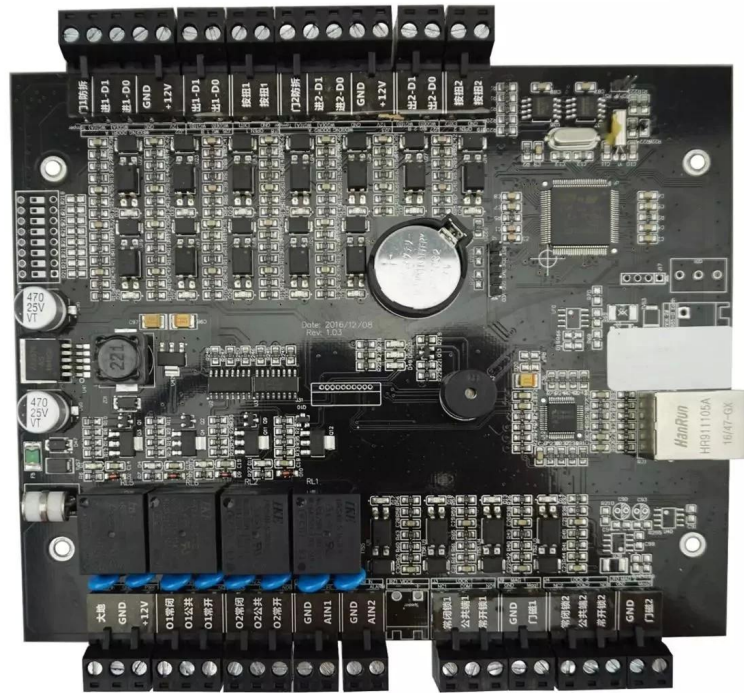


Single door access controller



Nom du produit	Contrôleur d'accès TCP / IP à porte unique à deux sens
Source de courant:	DC 9V ~ 14V
Courant de travail	<350 mA
Peut gérer 1 porte dans et hors	
20000 utilisateurs, 100 000 enregistrements d'événements	
Communication TCP / IP (option R485)	

Compatible accessories introduction



Card reader× 4



Lock×2



Button× 2



Door sensor×2



siren ×1



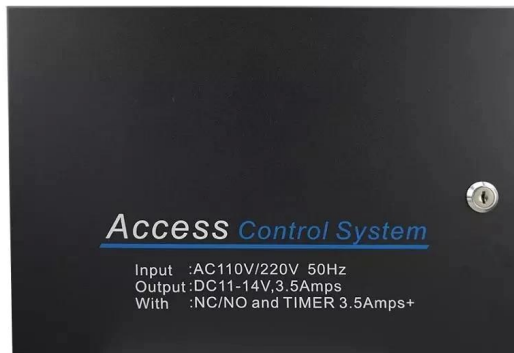
Fire alarm input/output



Burglar alarm input/ouput

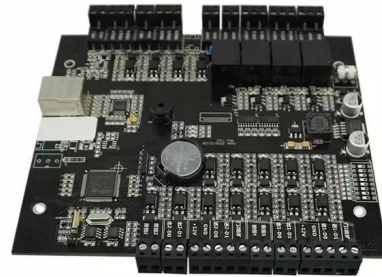


Optional accessories



Metal box power supply

Standard package



Single package size: 248*165*30mm

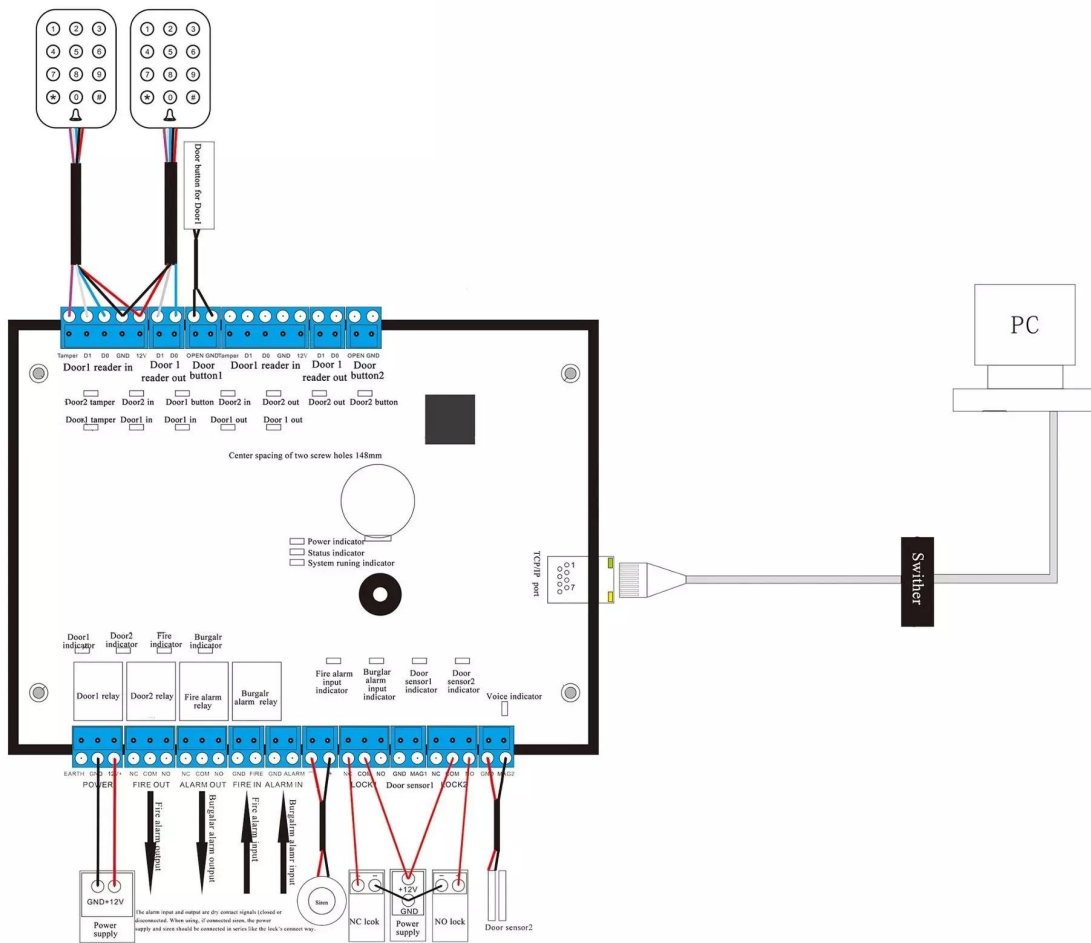
The number of full boxes: 46

FCL weight: 15kg

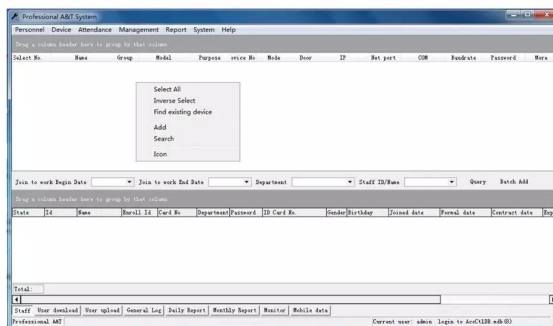
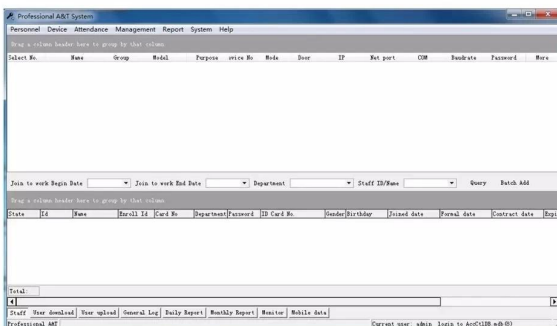
FCL size: 470*383*420mm

Welcome OEM

Wire diagram



PC software



EN RELATION PRODUIT:

