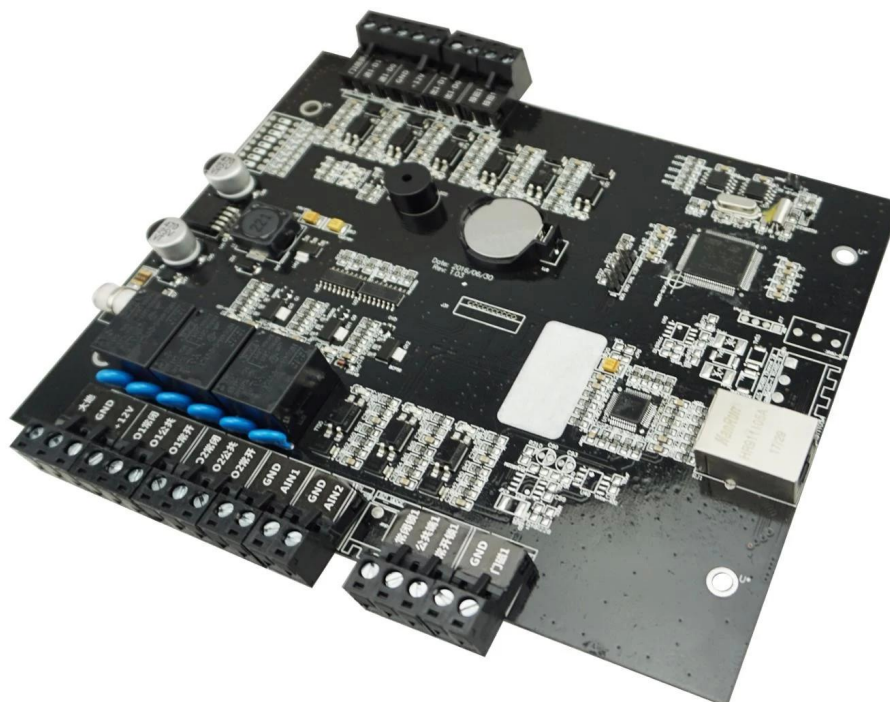


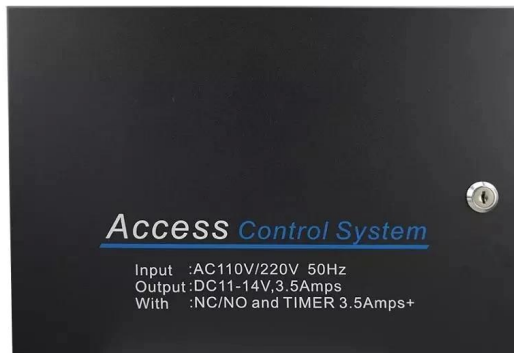
# Single door access controller



Nome del prodotto	Controller di accesso a porta singola TCP / IP con due direzioni
Alimentazione elettrica:	DC 9V ~ 14V
Workingcurrent	& Lt; 350mA
Può gestire 1 porta in entrata e in uscita	
20000 capacità utente, 100.000 record di eventi	
Comunicazione TCP / IP (opzione R485)	

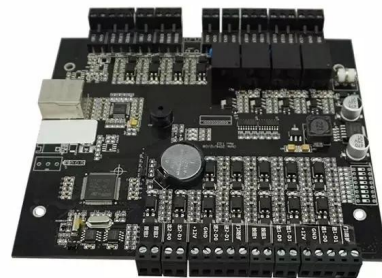


# Optional accessories



**Metal box power supply**

# Standard package



**Single package size: 248\*165\*30mm**

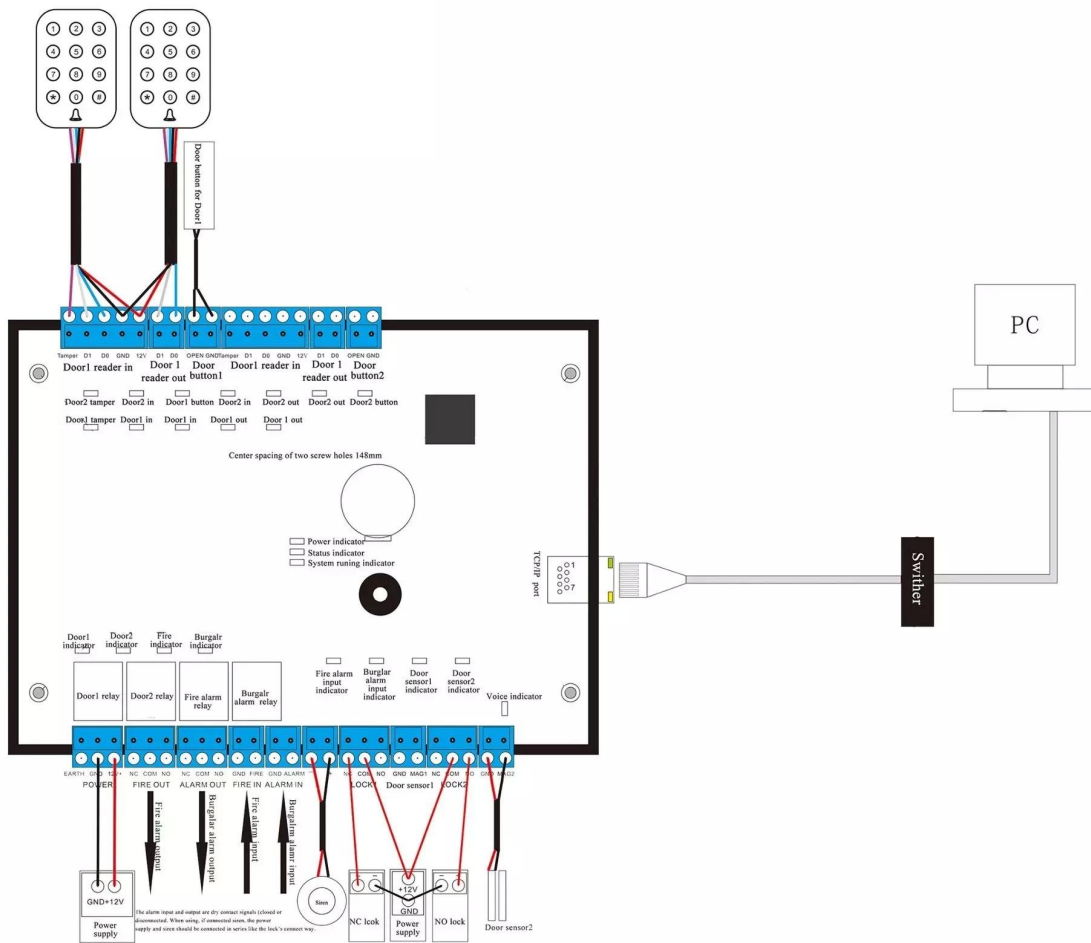
**The number of full boxes: 46**

**FCL weight: 15kg**

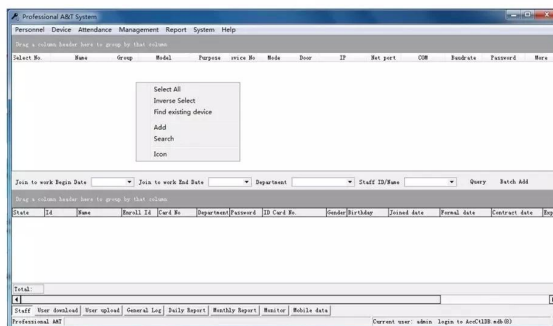
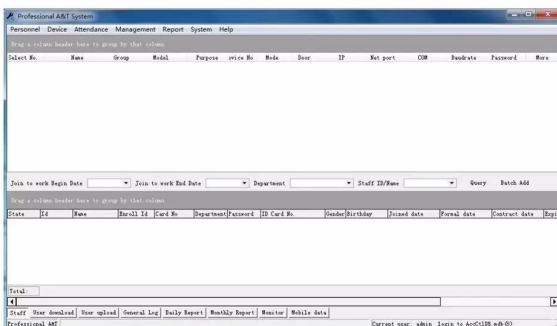
**FCL size: 470\*383\*420mm**

***Welcome OEM***

# Wire diagram



# PC software



## RELAZIONATO PRODOTTO:

