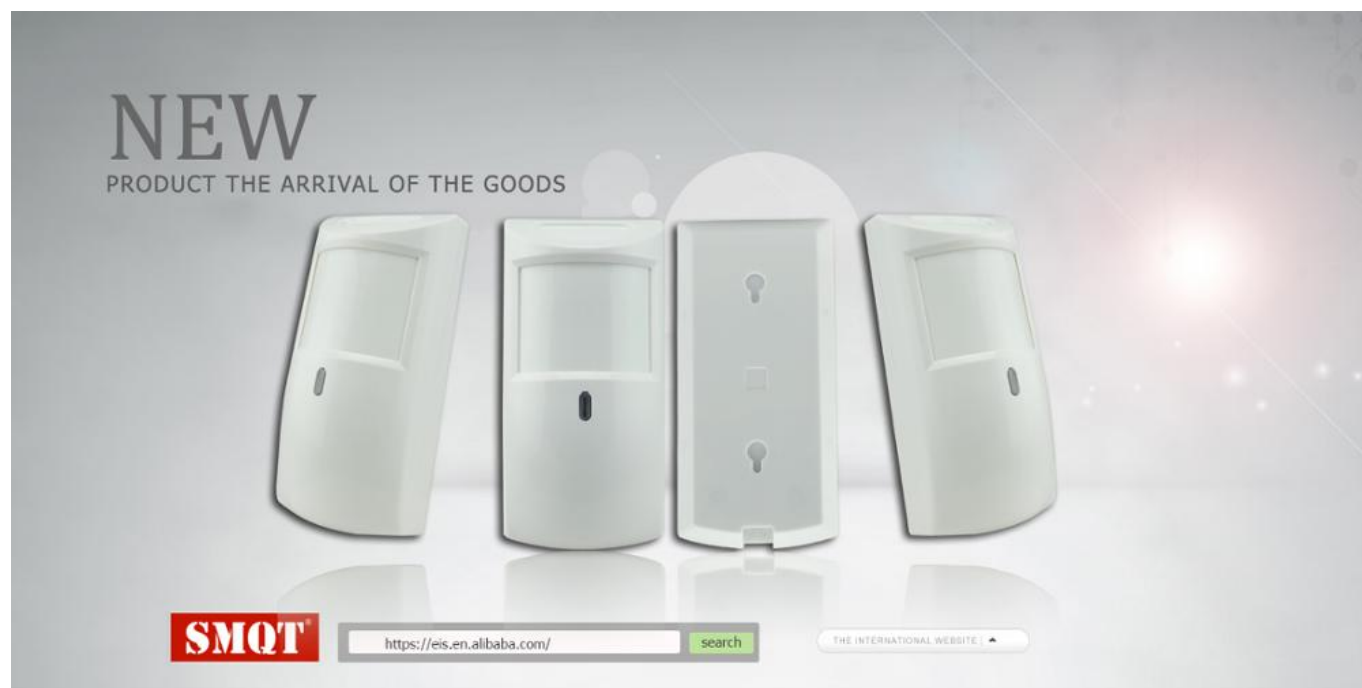


Newest Triple Technology PIR Microwave Motion Sensor



Product name	Newest Triple Technology PIR Microwave Motion Sensor
Model	EB-173
Size	130*63*45(mm)
Working voltage	9~16V DC
Working Current	30MA
Detecting angle	110°
Working temperature	-20°C~50°C
Detecting speed	0.2~7m/sec
Install Height	2.2m
Storage temperature	-25°C~65°C
Sensitivity	Adjustable
PIR Feature	Infrared sensro type :Dual elements PIR sensor Auto temperature compensation:NIC compensation Detecting distance:12m Detecting angle:110° Alarm duration:PULSE1:10sec. PULSE2:30 sec

Microwave feature	Microwave antenna type:Flat strip microwave antennea with FET oscillator Frequency:FCC&DOC10.525GHz Detecting method:Doppler(effect)move Theiries:Dopper(effect)+Energies nalysis Digital filter:50/60Hz Self-test:Microwave self-test function MCU type:8 bit microchip
Alarm indicator	Red LED Light(close if need)
Alarm output	NC/NO optional,28V DC,80mA
Anti-tamper switch	NC,28V DC,0.15A
Operating humidity	95%
Color	White
Weight	0.15kg

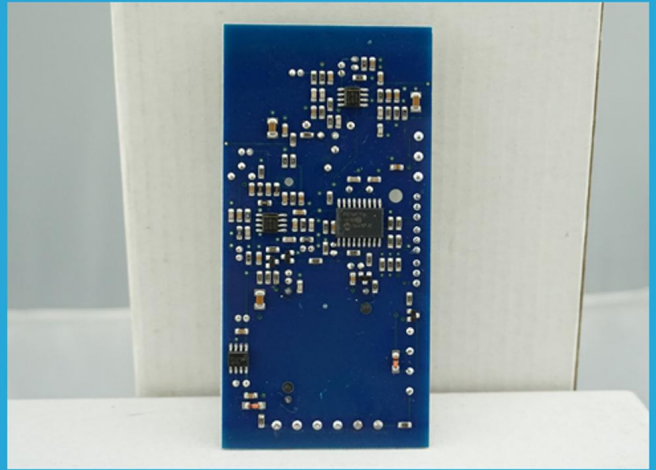
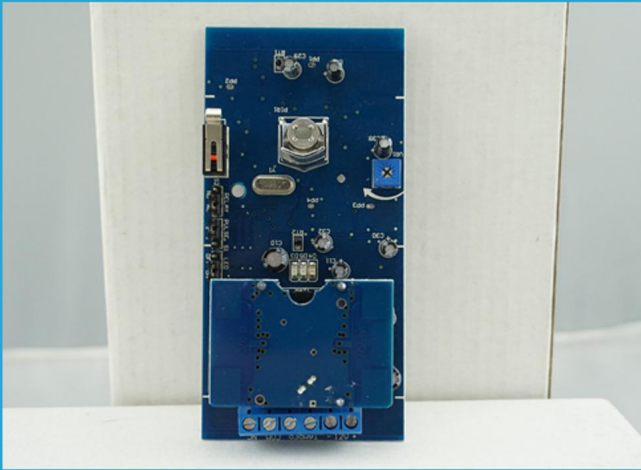
Product Features

What Features of our sensor EB-173?



Product Picture

IN-KIND SHOOTING



Related Items

SHOW CASE

<div><div>SMQT® 深圳市铭汗科技有限公司 SHENZHEN MINGQIAN TECHNOLOGY CO.,LTD</div><div></div><div><div><div>FC</div><div>✓</div><div>CE</div></div><div>https://eis.en.alibaba.com</div></div></div>	<div><div>SMQT® 深圳市铭汗科技有限公司 SHENZHEN MINGQIAN TECHNOLOGY CO.,LTD</div><div></div><div><div><div>FC</div><div>✓</div><div>CE</div></div><div>https://eis.en.alibaba.com</div></div></div>	<div><div>SMQT® 深圳市铭汗科技有限公司 SHENZHEN MINGQIAN TECHNOLOGY CO.,LTD</div><div></div><div><div><div>FC</div><div>✓</div><div>CE</div></div><div>https://eis.en.alibaba.com</div></div></div>
<div><div>SMQT® 深圳市铭汗科技有限公司 SHENZHEN MINGQIAN TECHNOLOGY CO.,LTD</div><div></div><div><div><div>FC</div><div>✓</div><div>CE</div></div><div>https://eis.en.alibaba.com</div></div></div>	<div><div>SMQT® 深圳市铭汗科技有限公司 SHENZHEN MINGQIAN TECHNOLOGY CO.,LTD</div><div></div><div><div><div>FC</div><div>✓</div><div>CE</div></div><div>https://eis.en.alibaba.com</div></div></div>	<div><div>SMQT® 深圳市铭汗科技有限公司 SHENZHEN MINGQIAN TECHNOLOGY CO.,LTD</div><div></div><div><div><div>FC</div><div>✓</div><div>CE</div></div><div>https://eis.en.alibaba.com</div></div></div>
<div><div>SMQT® 深圳市铭汗科技有限公司 SHENZHEN MINGQIAN TECHNOLOGY CO.,LTD</div><div></div><div><div><div>FC</div><div>✓</div><div>CE</div></div><div>https://eis.en.alibaba.com</div></div></div>	<div><div>SMQT® 深圳市铭汗科技有限公司 SHENZHEN MINGQIAN TECHNOLOGY CO.,LTD</div><div></div><div><div><div>FC</div><div>✓</div><div>CE</div></div><div>https://eis.en.alibaba.com</div></div></div>	<div><div>SMQT® 深圳市铭汗科技有限公司 SHENZHEN MINGQIAN TECHNOLOGY CO.,LTD</div><div></div><div><div><div>FC</div><div>✓</div><div>CE</div></div><div>https://eis.en.alibaba.com</div></div></div>

Company Information

OFFICE SHOW



CUSTOMER



EXHIBITION



CERTIFICATE



HOW TO COOPERATION



Trade terms:	EXW
Payment terms:	T/T, Western union, Paypal etc
Delivery time:	Normal order within 7 days, bulk order 10-15days
Packing:	Neutral paper box and paper carton
Shipping:	Express company or by sea, by air or appointed by buyer

FAQ

FAQ

Q:Can I have a sample order?

A:Yes, we are willing to offer trial sample order to you for quality test. Mixed samples are acceptable.

Q: What is the lead time?

A:Sample needs 1-3 working days, mass production time needs 10-15 working days for order less than 5000pcs.

Q: Do you have any MOQ limit?

A:EXW MOQ is 100pcs under blank box.

Q: How do you ship the goods and how long does it take arrive?

A:The sample will be sent to you by optional shipping service (couriers, air, and sea). The delivery time depends on the shipping service.

Q:How will we proceed the order if I have logo to print?

A:Firstly, we will prepare artwork for visual confirmation. If the color and position are right, we would make sampling firstly from silk print factory and take picture for your second confirmation before mass production.

Q: Does alarm panel work with any sensor?

A:The alarm panel can work with all dry contact wired detectors and wireless detector, including almost all of the wireless sensors from Chinese manufacturers. The wireless encode and decode is EV1527 or our wireless sensors.