

Special wired Infrared 12v pir sensor ceiling, small pir sensor alarm

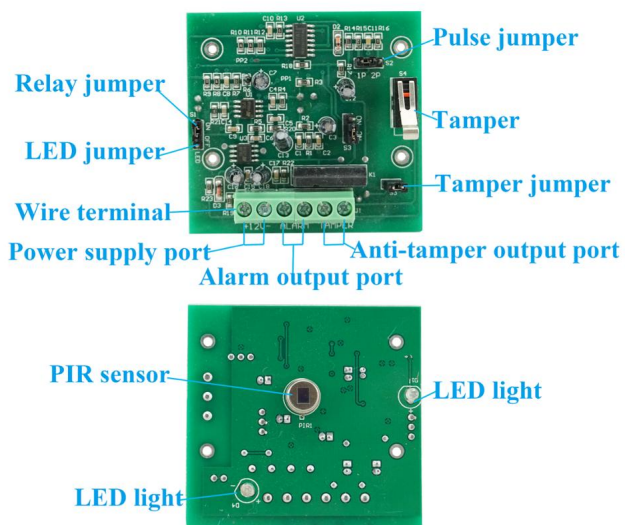


Specification	
Product name	Special wired Infrared 12v pir sensor ceiling, small pir sensor alarm
Model	EB-175
Size	□135 * 30(mm)
Working voltage	12~24V DC
Working Current	18mA(DC12V)
Detecting angle	360°
Self-testing time	60S
Working temperature	-10°C~50°C
Detecting speed	0.2~7m/sec
Install Height	2.2~6m
Storage temperature	-25°C~65°C
PIR Feature	Infrared sensro type :Dual elements PIR sensor Auto temperature compensation:NIC compensation Detecting distance:8~10m Detecting angle:360°
Alarm indicator	Red LED Light(close if need)

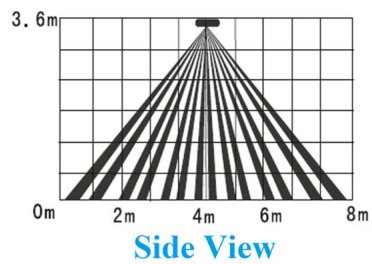
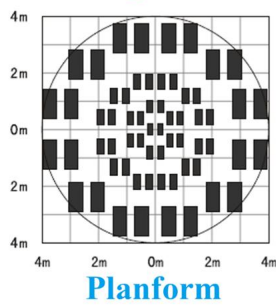
Alarm output	NC ,12V DC,100mA
Anti-tamper switch	NC ,12V DC,100mA
Operating humidity	95%
Color	White
Weight	0.1kg

Product Features

What Features of our pir sensor ceiling?

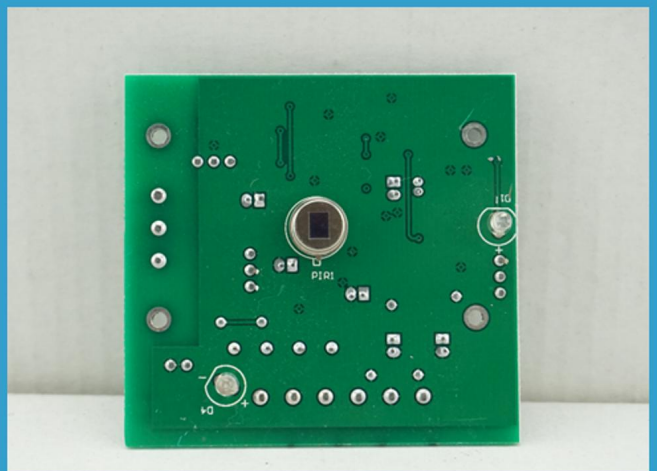
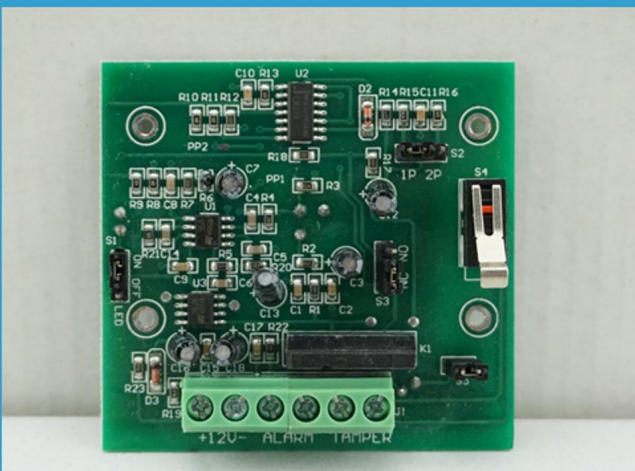


Detecting Area View:



Product Picture

IN-KIND SHOOTING



APPLICATION



This model wired motion detector product is widely use in all kinds of burglar alarm system, Such as Villa ,Home ,Factory, Warehouse, Office, Bank etc.

Company Information

OFFICE SHOW



CUSTOMER



EXHIBITION



CERTIFICATE



HOW TO COOPERATION



Trade terms:	EXW
Payment terms:	T/T, Western union, Paypal etc
Delivery time:	Normal order within 7 days, bulk order 10-15days
Packing:	Neutral paper box and paper carton
Shipping:	Express company or by sea, by air or appointed by buyer

FAQ

FAQ

Q:Can I have a sample order?

A:Yes, we are willing to offer trial sample order to you for quality test. Mixed samples are acceptable.

Q: What is the lead time?

A:Sample needs 1-3 working days, mass production time needs 10-15 working days for order less than 5000pcs.

Q: Do you have any MOQ limit?

A:EXW MOQ is 100pcs under blank box.

Q: How do you ship the goods and how long does it take arrive?

A:The sample will be sent to you by optional shipping service (couriers, air, and sea). The delivery time depends on the shipping service.

Q:How will we proceed the order if I have logo to print?

A:Firstly, we will prepare artwork for visual confirmation. If the color and position are right, we would make sampling firstly from silk print factory and take picture for your second confirmation before mass production.

Q: Does alarm panel work with any sensor?

A:The alarm panel can work with all dry contact wired detectors and wireless detector, including almost all of the wireless sensors from Chinese manufacturers. The wireless encode and decode is EV1527 or our wireless sensors.