



| Specification | |
|--------------------------------|--|
| Product name | 12v DC indoor PIR+microwave motion detector anti-pet |
| Model | EB-172 |
| Size | 128*65*41(mm) |
| Working voltage | 9~13.5V DC |
| Static current | 25uA(Under 12V DC power supply) |
| Alarm current | 15mA(Under 12V DC power supply) |
| MW coverage | 12*12m, sensitivity 30%~100% adjustable |
| PIR coverage | 12*12m |
| Detecting angle | 110° |
| Working temperature | -10℃~50℃ |
| Storage temperature | -25℃~65℃ |
| Anti-EMI | >300V/M |
| Anti-light interference | >6500LUX |
| Color | White |
| Weight | 0.1kg |

What features of our 172PIR +microwave detector?



1.Wired MW+PIR intelligent motion detector

2.9~13V DC power supply

3.3 LED indicator light

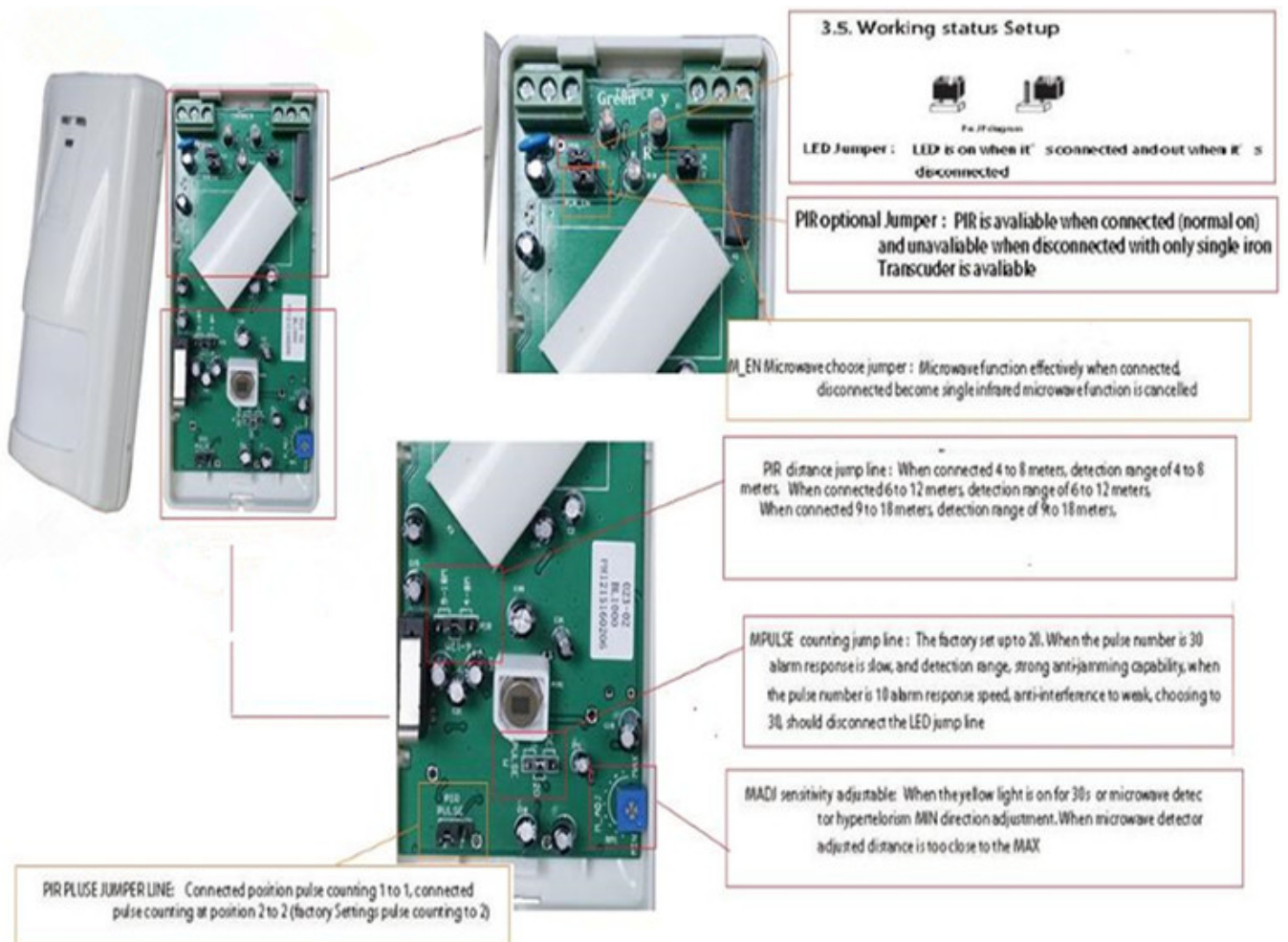
4.Compatible all kinds of alarm system's wired zones

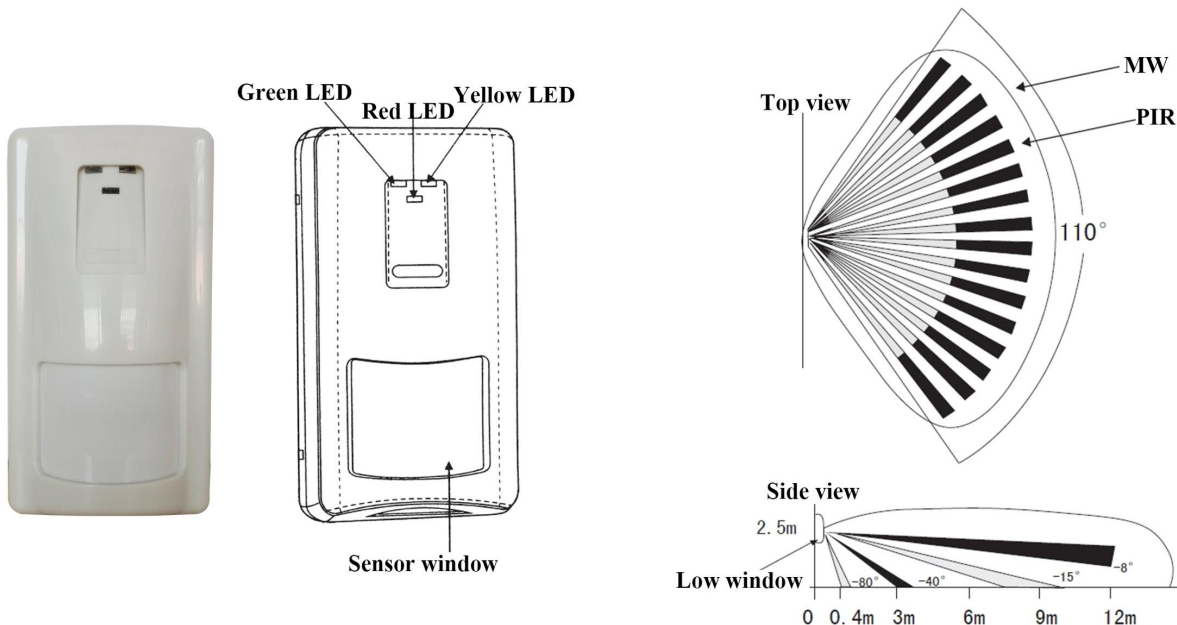
5.2 years warranty , welcome OEM

IN-KIND SHOOTING



HOW TO USE IT

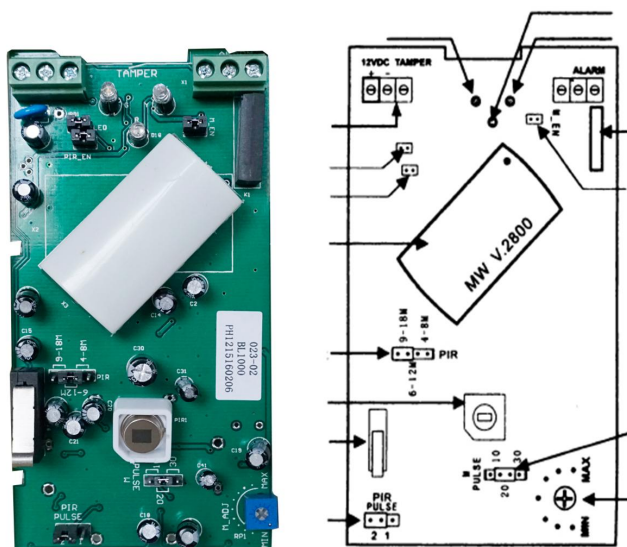




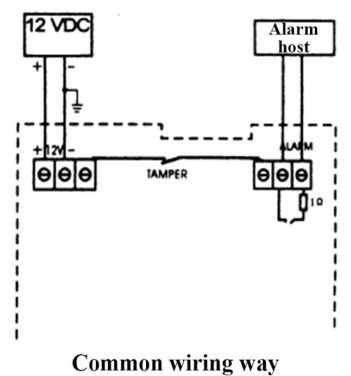
Apperance

Detecting distance

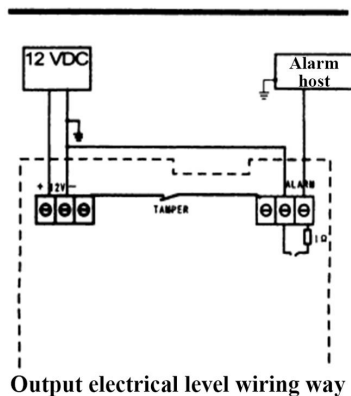
MW+PIR+Intelligent Motion Detector EB-172



PCB board



Common wiring way



Output electrical level wiring way

Wiring way



This model wired motion detector product is widely use in all kinds of burglar alarm system, Such as Villa ,Home ,Factory, Warehouse, Office, Bank etc.

RELATED ITEMS



PACKING & SHIPPING



OFFICE SHOW



CUSTOMER



EXHIBITION

2011 Brazil Fair



2012 shen yang Fair



2013 Jinan Fair



2013 Shenzhen Fair



2012 shen yang Fair



2013 shen yang Fair



2013 Shenzhen Fair



2015 Shenzhen Fair

CERTIFICATION



FAQ

Q: Can I have a sample order?

A: Yes, we are willing to offer trial sample order to you for quality test. Mixed samples are acceptable.

Q: What is the lead time?

A: Sample needs 1-3 working days, mass production time needs 10-15 working days for order less than 5000pcs.

Q: Do you have any MOQ limit?

A: EXW MOQ is 100pcs under blank box.

Q: How do you ship the goods and how long does it take arrive?

A: The sample will be sent to you by optional shipping service (couriers, air, and sea). The delivery time depends on the shipping service.

Q: How will we proceed the order if I have logo to print?

A: Firstly, we will prepare artwork for visual confirmation. If the color and position are right, we would make sampling firstly from silk print factory and take picture for your second confirmation before mass production.