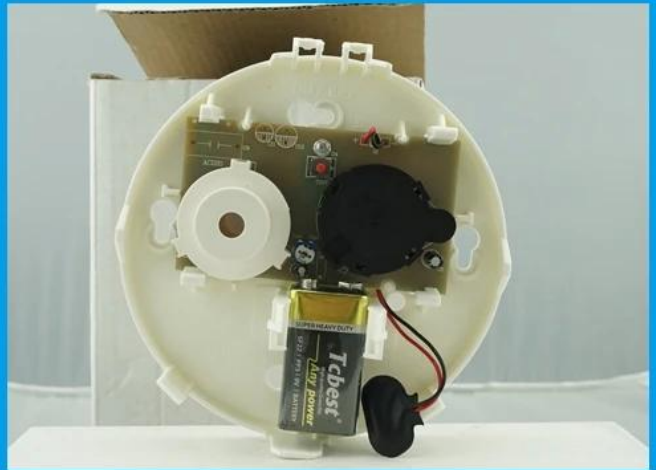
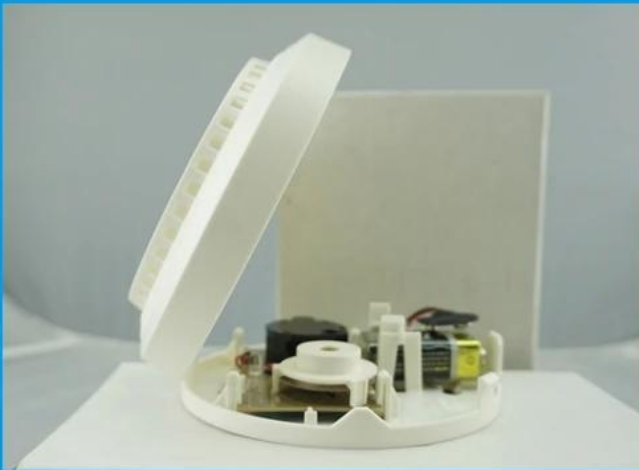


Battery power supply standalone photoelectric smoke detector



WHAT DOES EB-117S-2 LOOK LIKE ?



HOW ABOUT EB-117S-2 STANDARD PACKAGE?



EB-117S-2 MAIN PARAMETER

Product Name:	Battery power supply standalone photoelectric smoke detector
Model number:	EB-117S-2
Power supply:	DC 9 battery(6F22)
Battery life time:	>= 1 year
Size:	140 diameter*41(mm)
Detecting area:	60 square meter(at 6m installation height)
Alarm indication:	Red LED light flash & alarm sound prompt
Suitable for:	Fire alarm
Installation way:	Ceiling mounted
Working temperature:	-10 Degrees Celsius~ +50 Degrees Celsius
Working humidity:	0~90%RH(no condensation)
Weight:	0.2kg
LED:	1 LED light
Material:	ABS housing+ PCB board
Housing color:	White
Warranty:	2 years warranty
OEM:	Welcome OEM

WHAT FEATURES EB-117S-2 HAVE?



1.Standalone photoelectric smoke detector

2.Working power DC 9V(1 6F22 battery)

3.Standby current :<12uA

4.Alarm current:<=15mA

5.Alarm indication:Red LED flash, alarm sound prompt

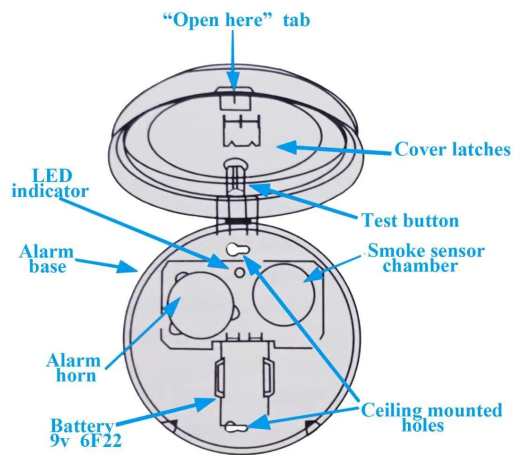
6.Sound pressure 85Db at 10 feet

7.Battery life time >=1 year

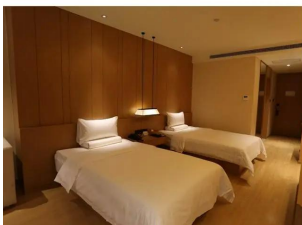
8.Suitable for office, home use

9.2 years warranty , welcome OEM

HOW DOES EB-117S-2 WORKING?



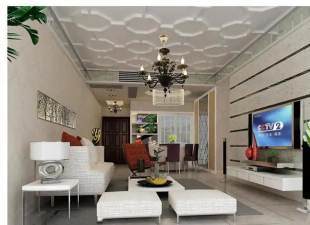
Where it use ?



Hotel



Office



Home



Library



Warehouse

HOW ABOUT OTHER CHOICE?

SMQT
铭汗科技



SMQT
铭汗科技



SMQT
铭汗科技



SMQT
铭汗科技



SMQT
铭汗科技



SMQT
铭汗科技

