

Parameter	
Product name	DSC Compatible Wired Pet Immune PIR Motion Detector EB-182
Model	EB-182
Size	107*59*40mm
Working voltage	9~16V DC
Static current	12mA(Under 12V DC power supply)
Alarm current	NC DC12V max 100mA
Pet immune	>33kg dog or cat
Alarm time	2.2s min
PIR coverage	12m
Detecting angle	110°
Working temperature	-10°C~50°C
Storage temperature	-25°C~65°C
Color	White
Weight	0.1kg

Features

EB-182 is a dual-element infrared passive detector widely used in domestic use, with strong signal capturing ability, anti-false alarm, pet immune, low leakage rate, low power consumption and real temperature compensation. High technical content, exquisite production process, elegant appearance, stable performance, long service life.



What features of DSC Compatible Wired Pet Immune PIR Motion Detector EB-182?



1.Wired pet immune PIR motion sensor

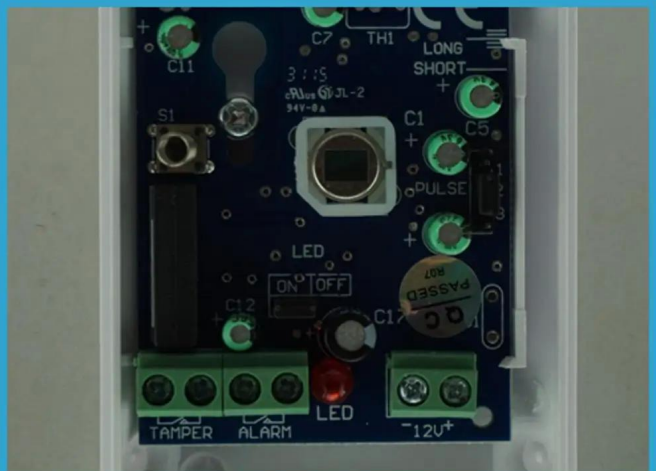
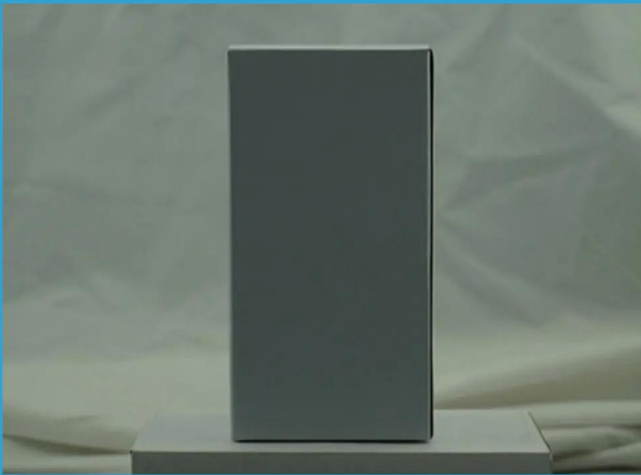
2.DC 9~16v opetating voltage

3.10~15kg pet immune

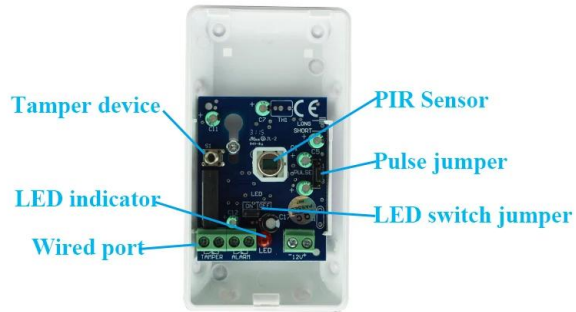
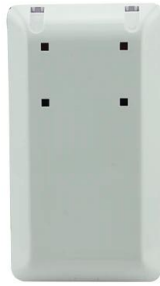
4.Fireproof ABS housing

5.2 years warranty , CE certification, welcome OEM

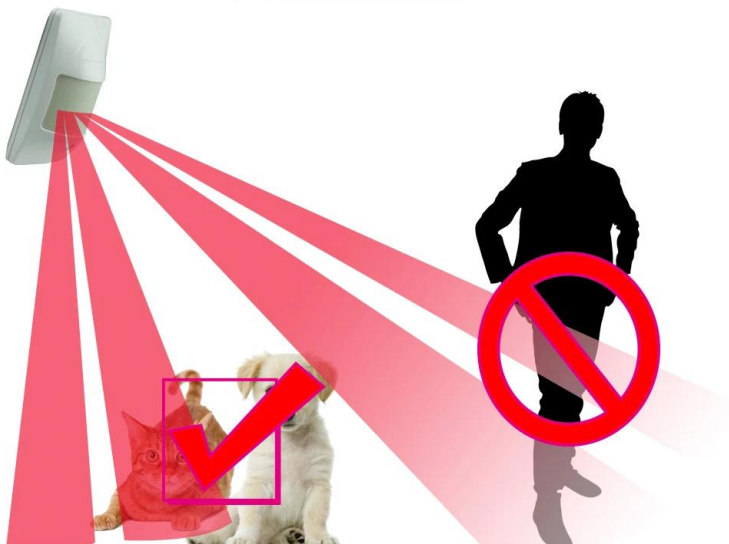
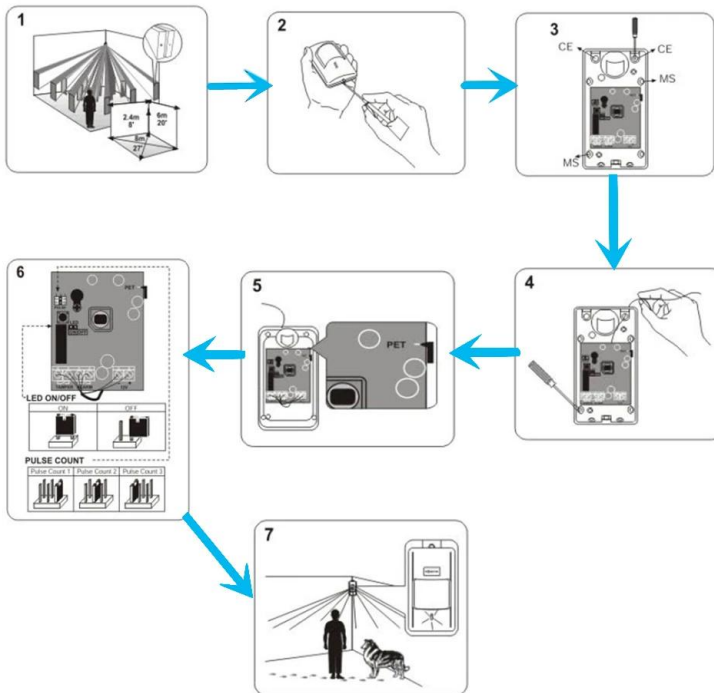
WHAT IS THE EB-182 LOOK LIKE?



HOW TO USE IT?



Installation:



HOW ABOUT OTHER CHOICE?



HOW ABOUT OUR COMPANY?



CUSTOMER



EXHIBITION

2011 Brazil Fair



2012 shen yang Fair



2013 Jinan Fair



2013 Shenzhen Fair



2012 shen yang Fair



2013 shen yang Fair



2013 Shenzhen Fair



2015 Shenzhen Fair



CERTIFICATE



HOW TO COPERATION?



Trade terms:	EXW
Payment terms:	T/T, Western union, Paypal etc
Delivery time:	Normal order within 7 days, bulk order 10-15days
Packing:	Neutral paper box and paper carton
Shipping:	Express company or by sea, by air or appointed by buyer

FAQ

Q:Can I have a sample order?

A:Yes, we are willing to offer trial sample order to you for quality test. Mixed samples are acceptable.

Q:What is the lead time?

A:Sample needs 1-3 working days, mass production time needs 10-15 working days.

Q:What is your MOQ?

A:No MOQ limit, the more quantity the more discounts.

Q:How do you ship the goods and how long does it take arrive?

A:The sample will be sent to you by optional shipping service (couriers, air, and sea),or appointed by buyer,7-15 days.

Q:How will we proceed the order if I have logo to print?

A:Firstly, we will prepare artwork for visual confirmation. If the color and position are right, we would make sampling firstly from silk print factory and take picture for your second confirmation before mass production.

