

## Door access control device with control host and IC card reader function



### EA-86's main parameter

Product Name:	Door access control device with control host and IC card reader function
Model number:	EA-86
Working voltage:	12V DC
Working current:	<100mA
Size:	117×78×22(mm)
User capacity:	1000 user
RFID card type:	IC 13.56Mhz
Card reading distance:	1~12cm
Wire port:	Lock, Door button, Door bell
Communication:	U disk
Door open mode:	Card/Password/Card+password
Keyboard:	Touch keypad
Feature:	Can working as IC card reader, connect with door access controller to use
Application:	Single door access control system

Suitable for:	Office, Apartment, hospital access control system project
Material:	Metal housing+ PCB board
Weight:	300g
Packaging:	Netural paper box and paper carton 1 pcs per box,100 boxes per carton
Working environment temperature:	0°C~60°C
Working humidity:	20%~90%
Warranty:	1 years warranty
OEM:	Welcome OEM

**What features EB-86 have?**

## Size



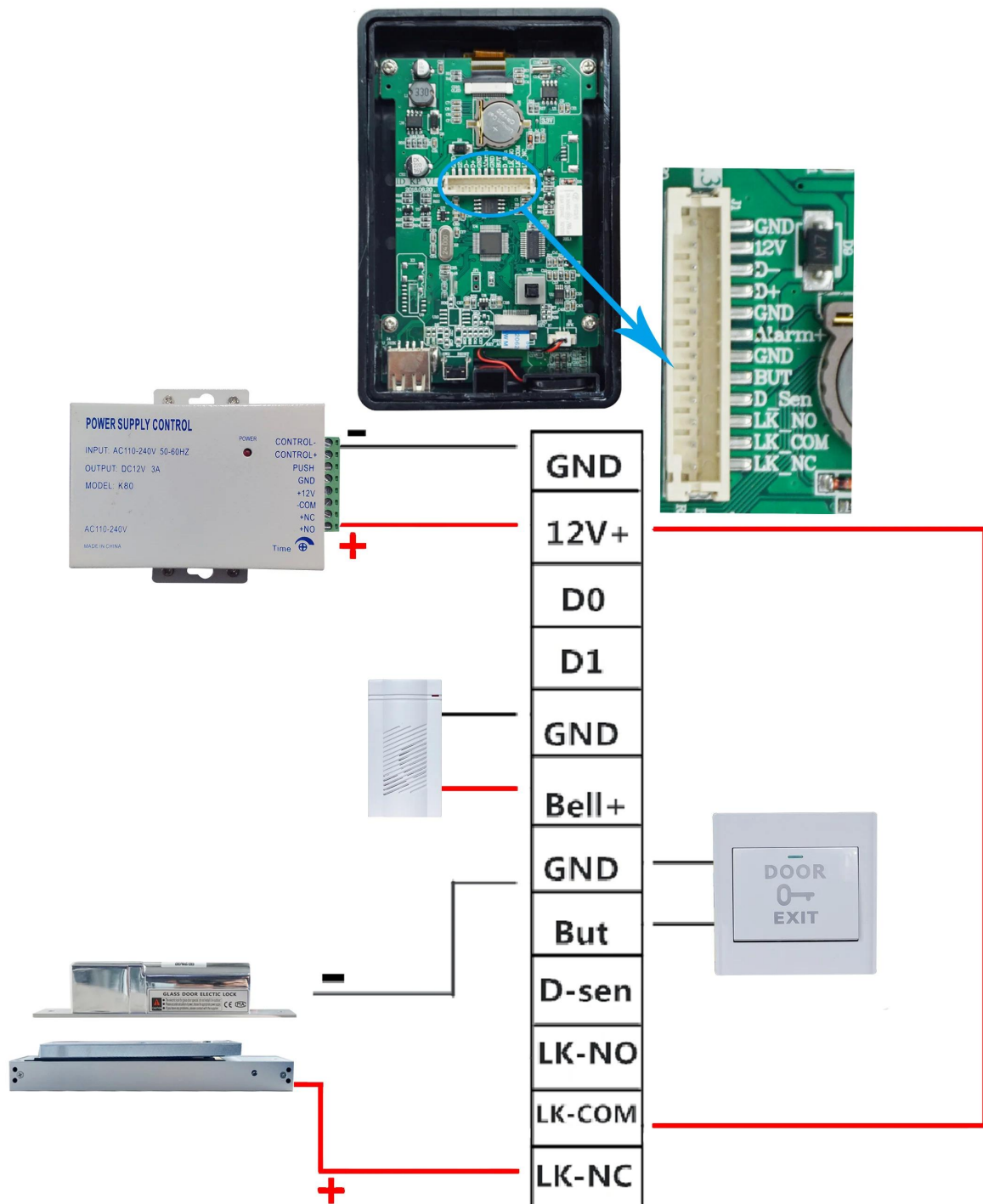
# Appearance



# U disk communiction



# Wire diagram





# Where to use?



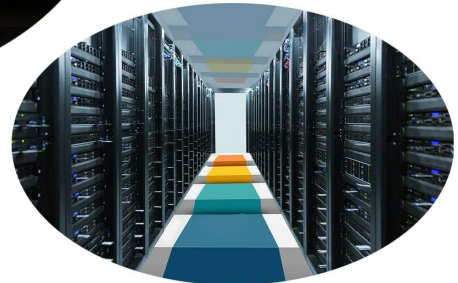
Laboratory



Archives



Indoor office



Computer room

HOW ABOUT OTHER CHOICE?

**SMQT**  
铭汗科技



**SMQT**  
铭汗科技



**SMQT**  
铭汗科技



**SMQT**  
铭汗科技



**SMQT**  
铭汗科技



**SMQT**  
铭汗科技



**SMQT**  
铭汗科技



**SMQT**  
铭汗科技



**SMQT**  
铭汗科技

