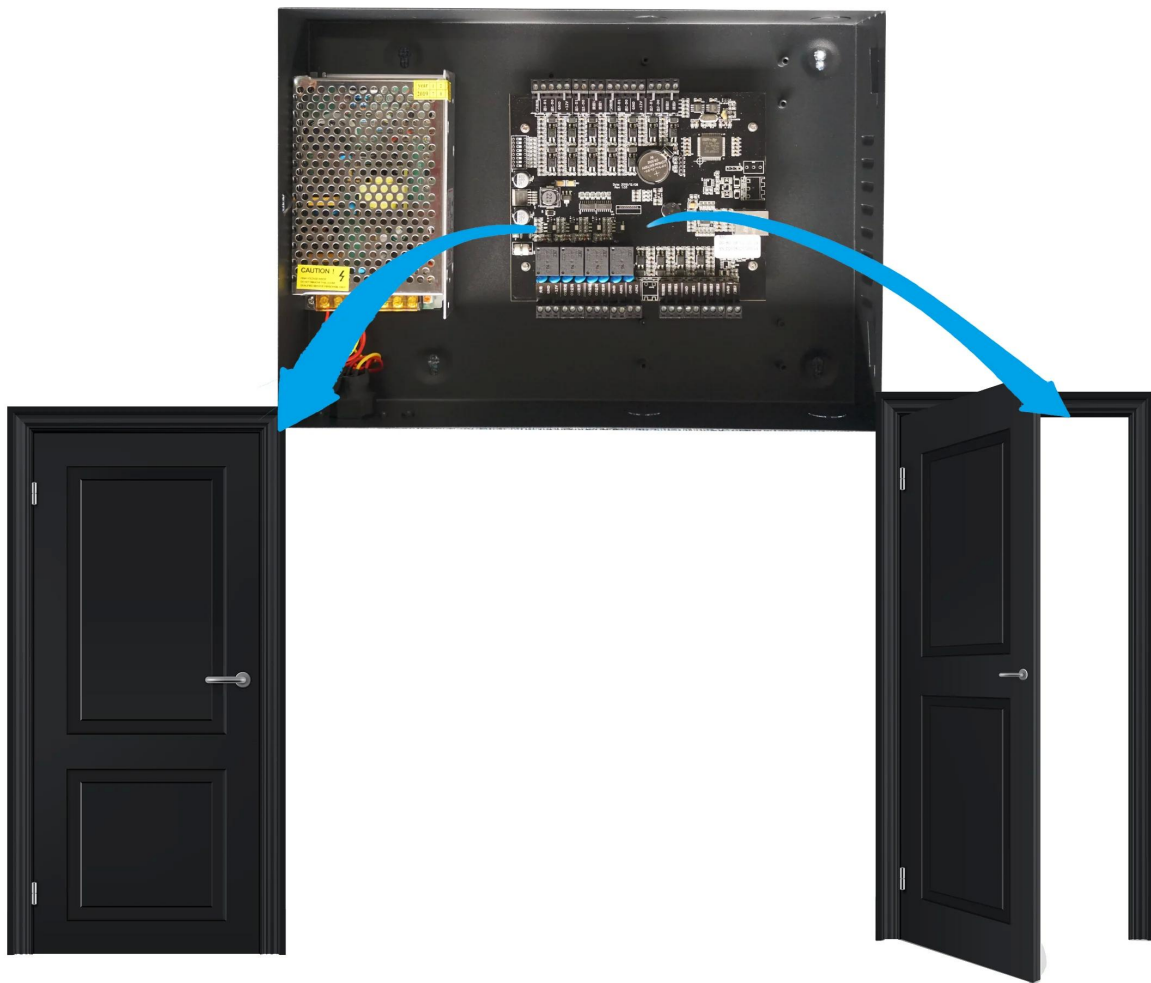


RS485/ TCP/IP Rfid Wg Double Door Access Controller Used In Access Control System Products



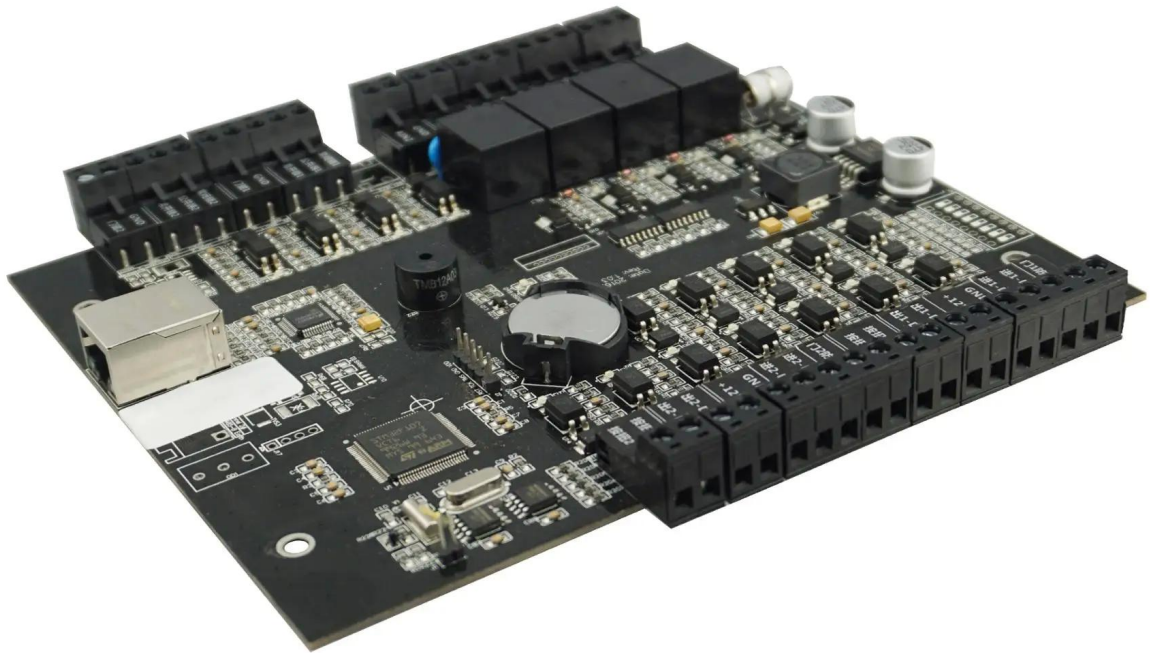
EA-812'S MAIN PARAMETER

Product Name:	RS485/ TCP/IP Rfid Wg Double Door Access Controller Used In Access Control System Products
Model number:	EA-812
Working voltage:	9~14V DC
Working current:	<350mA
User capacity:	20000 user capacity
Record capacity:	1000,000 event records (can record card, alarm, exit switch, door magnet, system action information, etc.)
Interface:	Card reader×4 pcs(WG26 or WG 34) Lock×2pcs Door release button×2pcs Door sensor×2pcs Alarm relay×1pcs TCP/IP×1pcs

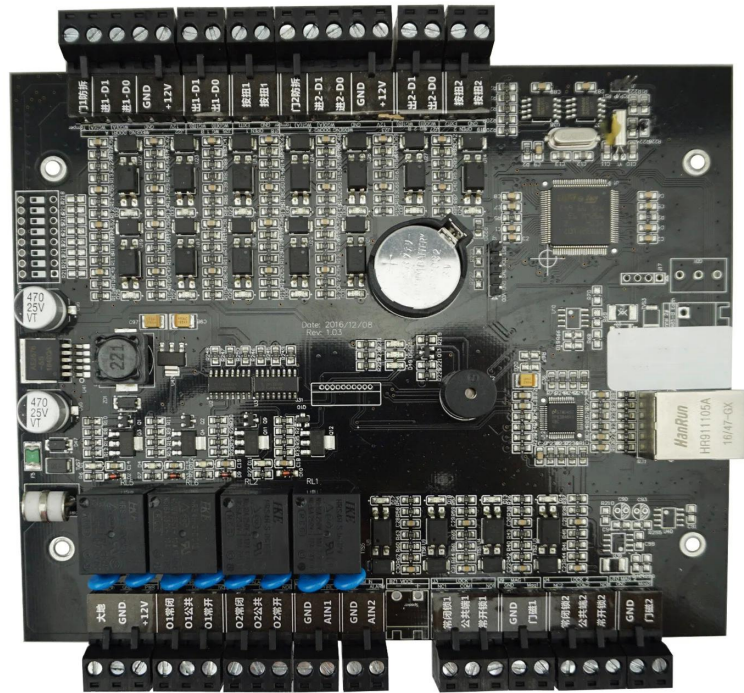
Communication way:	TCP/IP / Rs485 optional
Software:	Free PC software
Size:	170*155*17mm
Suitable for:	Access control system /Burglar alarm system/Fire alarm system
Material:	PCB board
Color:	Black
Weight:	0.7kg
Optional accessories:	Metal box power supply
Warranty:	2 years warranty
OEM:	Welcome OEM

WHAT FEATURES EA-812 HAVE?

Dual door access controller



Compatible accessories introduction



Card reader× 4



Lock×2



Button× 2

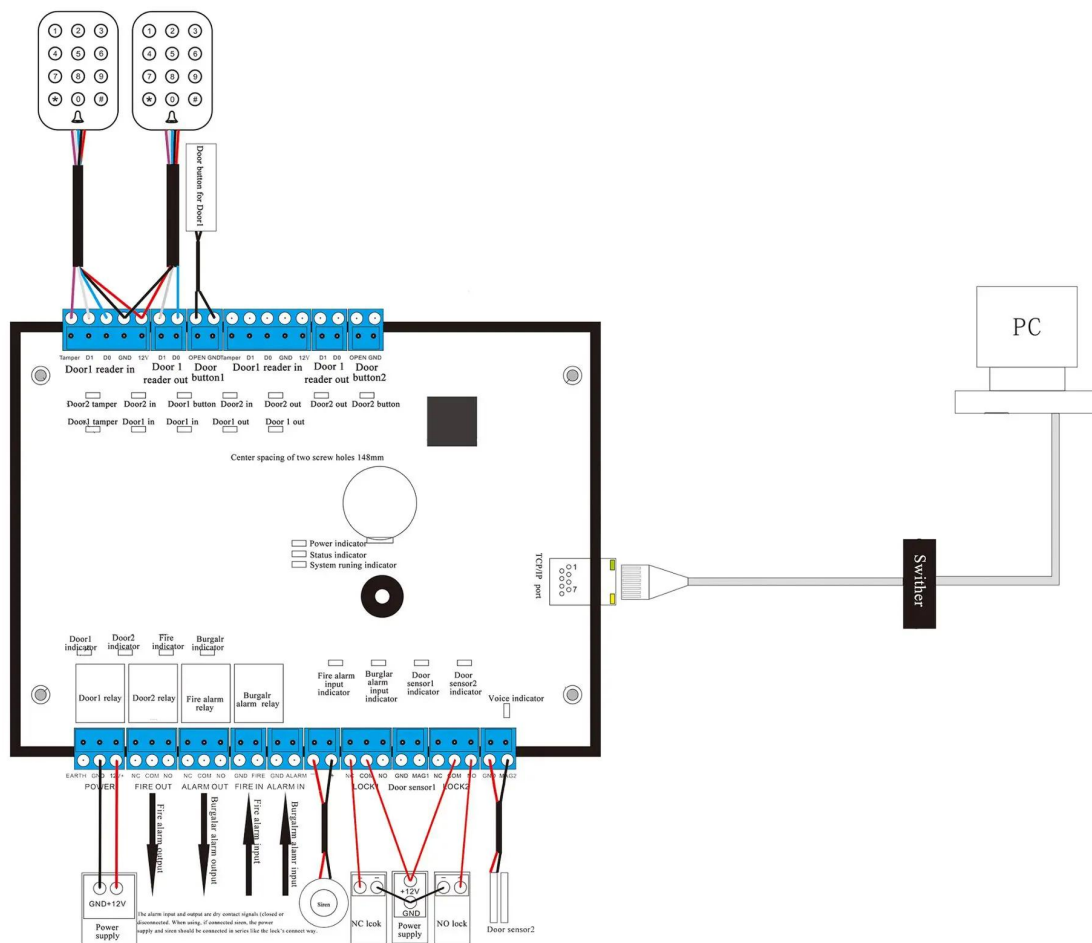


Door sensor×2

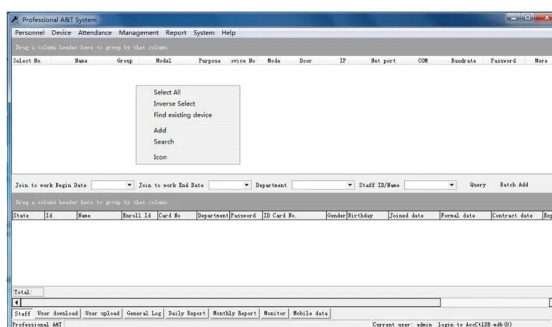
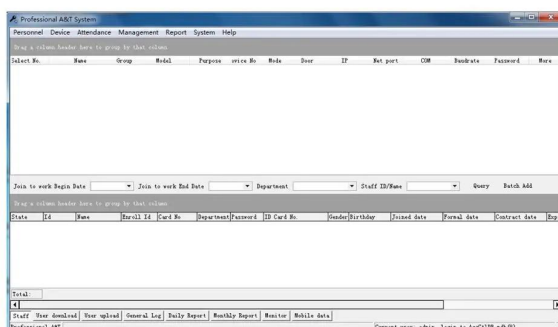


siren × **1**

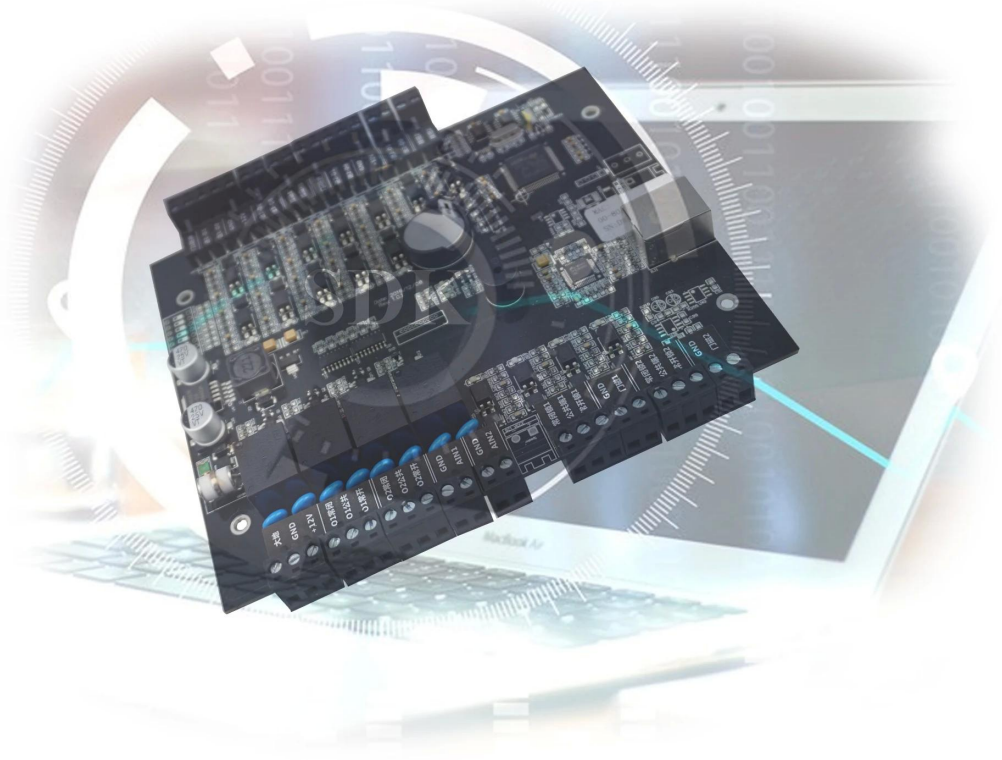
Wire diagram



PC software



Software SDK free offered

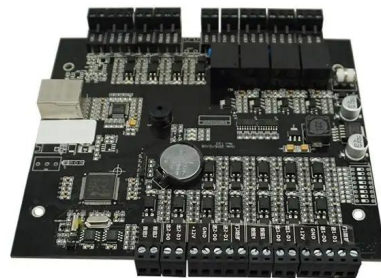


Optional accessories



Metal box power supply

Standard package



Single package size: 248*165*30mm

The number of full boxes: 46

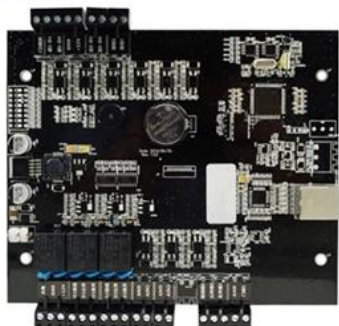
FCL weight: 15kg

FCL size: 470*383*420mm

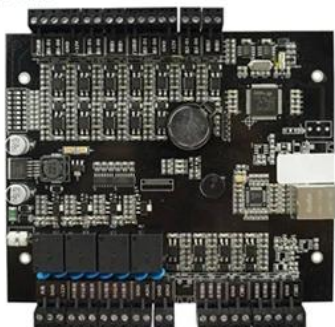
Welcome OEM

HOW ABOUT OTHER CHOICE?

SMQT
铭汗科技



SMQT
铭汗科技



SMQT
铭汗科技

