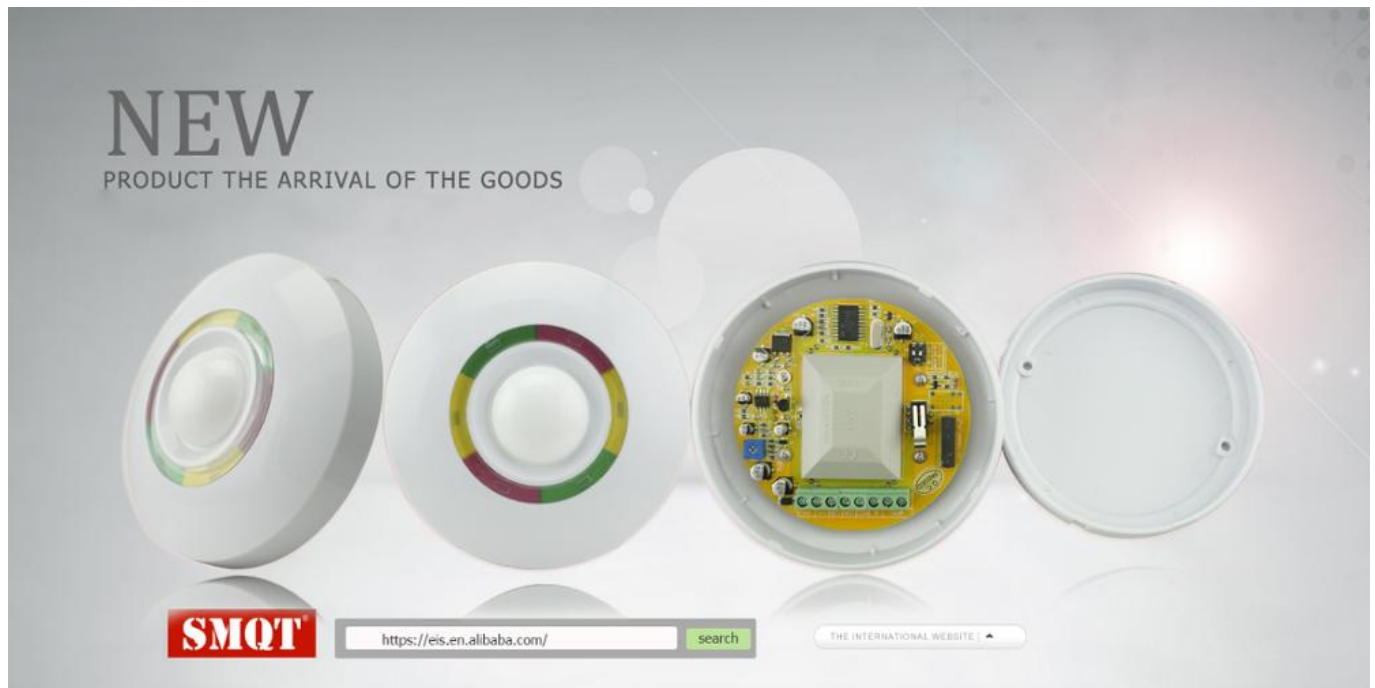


Dual detect Ceiling Mounted Microwave pir presence detector switch,infrared sensor



Specification	
Product name	Dual detect Ceiling Mounted Microwave pir presence detector switch,infrared sensor
Model	EB-176
Size	□135*30(mm)
Working voltage	9~16V DC
Working Current	15MA
Detecting angle	360°
Working temperature	-20°C~50°C
Detecting speed	0.2~7m/sec
Install Height	2.4~4.8m
Storage temperature	-25°C~65°C
Sensitivity	Adjustable
PIR Feature	Infrared sensro type :Dual elements PIR sensor Auto temperature compensation:NIC compensation Detecting distance:10m Detecting angle:360° Alarm duration:PULSE1:10sec. PULSE2:30 sec

Microwave feature	Microwave antenna type:Flat strip microwave antennea with FET oscillator Frequency:FCC&DOC10.525GHz Detecting method:Doppler(effect)move Theiries:Dopper(effect)+Energies nalysis Digital filter:50/60Hz Self-test:Microwave self-test function MCU type:8 bit microchip
Alarm indicator	Red LED Light(close if need)
Alarm output	NC,28V DC,0.15A
Anti-tamper switch	NC,28V DC,0.15A
Operating humidity	95%
Color	White
Weight	0.15kg

Product Features

What Features of our PIR sensor EB-176?

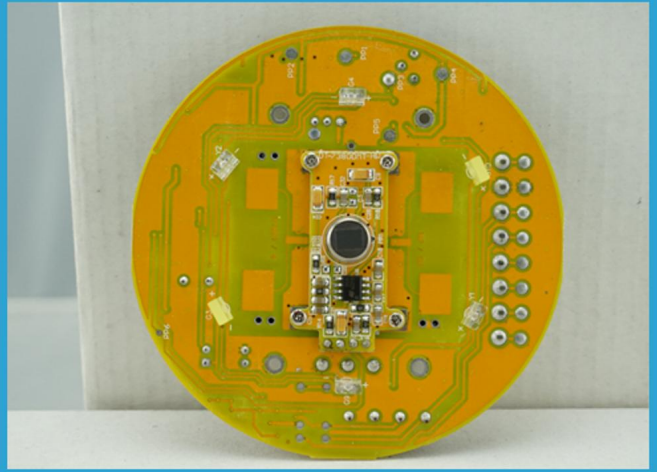
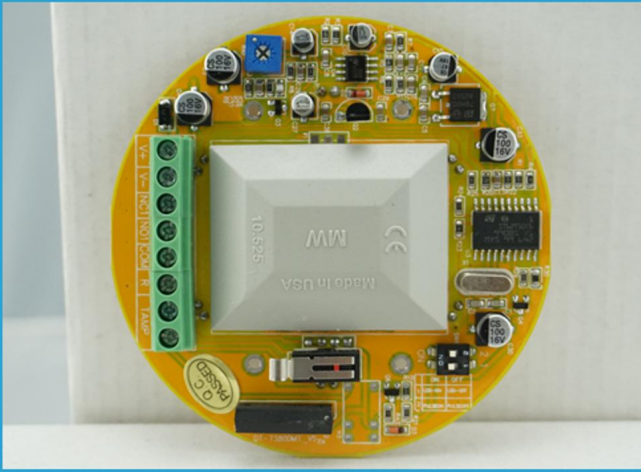
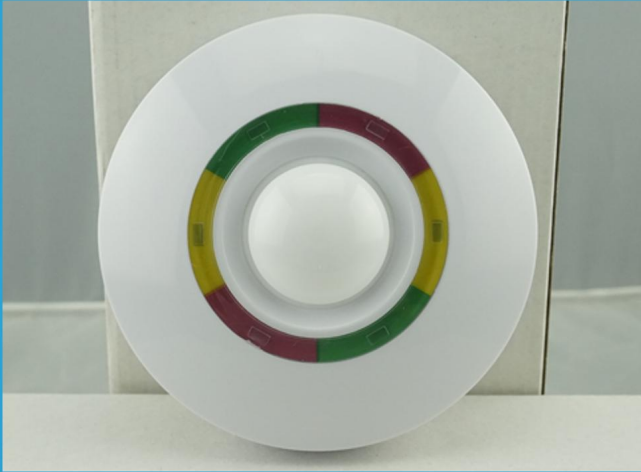
Features

- 1.Intelligent PIR & MW Ceiling Mounting Intrusion Detector is a digital micro-processing dual-tech detector adopting the technology of DMF (Digital Memory Focus), DMT (Dynamic Matrixing Time). It is with novel appearance, fluent lines, and dynamic LED display, which well assorts with modern household decoration and inosculates with the background subtly. The PIR parts adopt nice Fresnel lens to increase the effect of energy-receiving.
- 2.The MW parts adopt advanced plane antenna microwave transmission and four-layered screening technology, which has increased the control of MW detection range. In the way, high sensitivity can be reached from the distance o f 0.5 met er (1.8 f eet) to 10 meters 33 feet). The advanced technology of DMF DMT can help to give an exact estimation of true intruder or other interference that will easily trigg er wrong alarm. Its advanced anti-pets function can prevent wrong alarm to a 20 KG pet or 8 cats, insects, mice or birds etc.
- 3.EB-176 has overcome the interference that common detector can't prevent, and it won't trigger wrong alarm or miss alarm so it is far excellent in function than common detectors. It is the first option for household life and office decoration nowadays!Microwave&Passive infrared Motion detector, with perfect streamline surface design.

4. Adopted dual elements infrared sensor, microwave sensor, digital processing technology.
5. High reliability from perfect technical stability and design.

Product Picture

IN-KIND SHOOTING



APPLICATION



This model wired motion detector product is widely use in all kinds of burglar alarm system, Such as Villa ,Home ,Factory, Warehouse, Office, Bank etc.

Related Items

SHOW CASE



Company Information

OFFICE SHOW



CUSTOMER



EXHIBITION

2011 Brazil Fair



2012 shen yang Fair



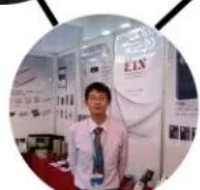
2013 Jinan Fair



2013 Shenzhen Fair



2012 shen yang Fair



2013 shen yang Fair



2013 Shenzhen Fair



2015 Shenzhen Fair



CERTIFICATE



HOW TO COOPERATION



Trade terms:	EXW
Payment terms:	T/T, Western union, Paypal etc
Delivery time:	Normal order within 7 days, bulk order 10-15days
Packing:	Neutral paper box and paper carton
Shipping:	Express company or by sea, by air or appointed by buyer

FAQ

FAQ

Q: Can I have a sample order?

A: Yes, we are willing to offer trial sample order to you for quality test. Mixed samples are acceptable.

Q: What is the lead time?

A: Sample needs 1-3 working days, mass production time needs 10-15 working days for order less than 5000pcs.

Q: Do you have any MOQ limit?

A: EXW MOQ is 100pcs under blank box.

Q: How do you ship the goods and how long does it take arrive?

A: The sample will be sent to you by optional shipping service (couriers, air, and sea). The delivery time depends on the shipping service.

Q: How will we proceed the order if I have logo to print?

A: Firstly, we will prepare artwork for visual confirmation. If the color and position are right, we would make sampling firstly from silk print factory and take picture for your second confirmation before mass production.

Q: Does alarm panel work with any sensor?

A: The alarm panel can work with all dry contact wired detectors and wireless detector, including almost all of the wireless sensors from Chinese manufacturers. The wireless encode and decode is EV1527 or our wireless sensors.

