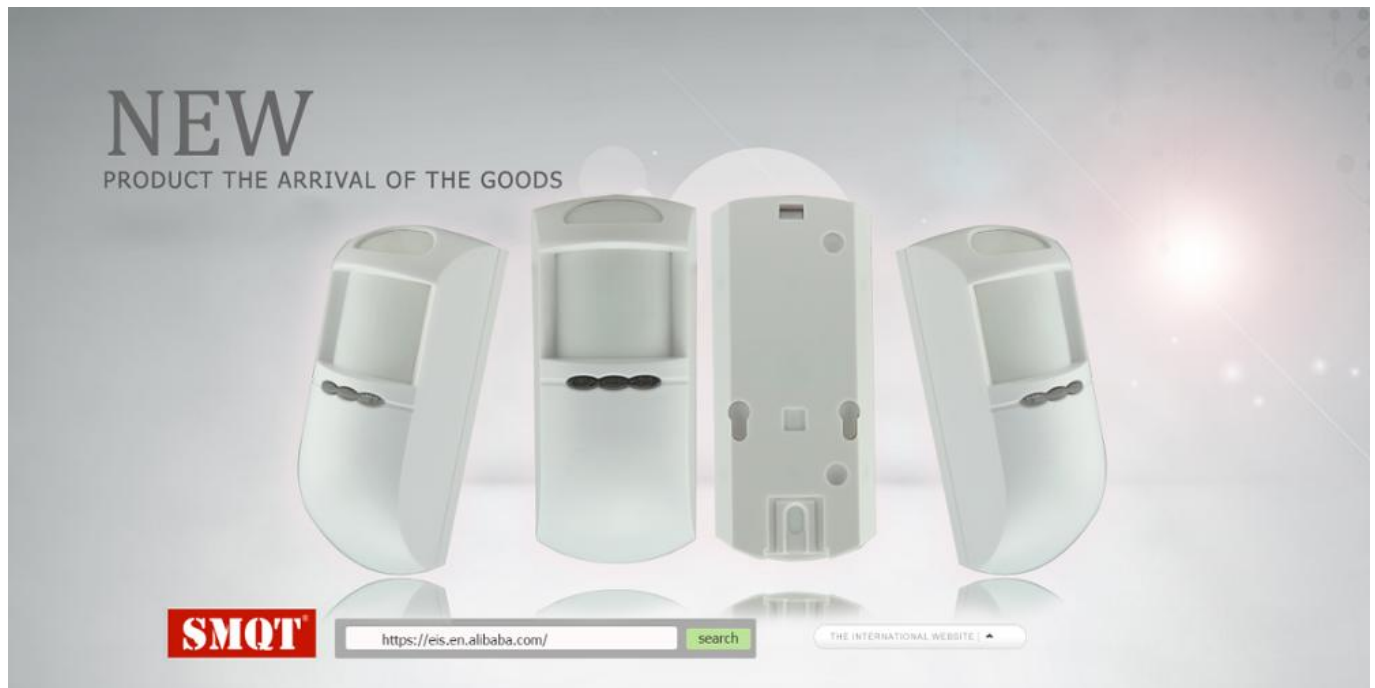


# Dual detect Outdoor sensor, Infrared detector,Microwave sensor pir



Specification	
<b>Product name</b>	Dual detect Outdoor sensor, Infrared detector,Microwave sensor pir
<b>Model</b>	EB-177
<b>Size</b>	135*58*40(mm)
<b>Working voltage</b>	12V DC
<b>Working Current</b>	Max 62MA
<b>Detecting angle</b>	110°
<b>Working temperature</b>	-20°C~50°C
<b>Detecting speed</b>	0.2~7m/sec
<b>Install Height</b>	2.4~4.8m
<b>Storage temperature</b>	-25°C~65°C
<b>Sensitivity</b>	Adjustable
<b>PIR Feature</b>	Infrared sensro type :Dual elements PIR sensor Auto temperature compensation:NIC compensation Detecting distance:10m Detecting angle:110°

<b>Microwave feature</b>	Microwave antenna type:Flat strip microwave antennea with FET oscillator Frequency:FCC&DOC10.525GHz Detecting method:Doppler(effect)move Theiries:Dopper(effect)+Energies nalysis Digital filter:50/60Hz Self-test:Microwave self-test function MCU type:8 bit microchip
<b>Alarm indicator</b>	Red LED Light(close if need)
<b>Alarm output</b>	NC,25V DC,125mA
<b>Anti-tamper switch</b>	NC,25V DC,125mA
<b>Operating humidity</b>	95%
<b>Color</b>	White
<b>Weight</b>	0.2kg

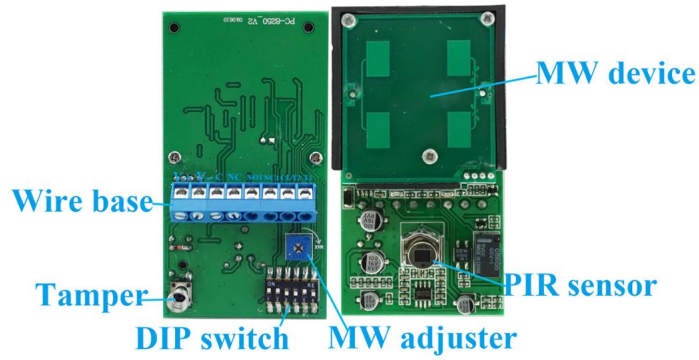
#### Product Features

**What Features of our Microwave sensor pir?**

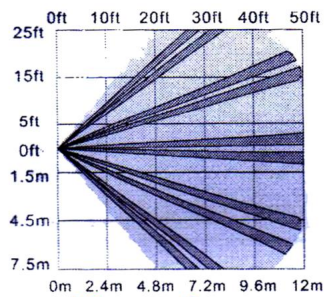




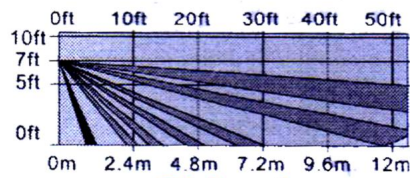




## Detection distance:



Top view



Side view



Infrared sensro type :Dual elements PIR sensor  
Auto temperature compensation:NIC compensation  
Detecting distance:10m  
Detecting angle:110°  
Microwave antenna type:Flat strip microwave antennea with FET oscillator  
Frequency:FCC&DOC10.525GHz  
Detecting method:Doppler(effect)move  
Theiries:Dopper(effect)+Energies nalysis  
Digital filter:50/60Hz  
Self-test:Microwave self-test function  
MCU type:8 bit microchip

#### **Product Picture**

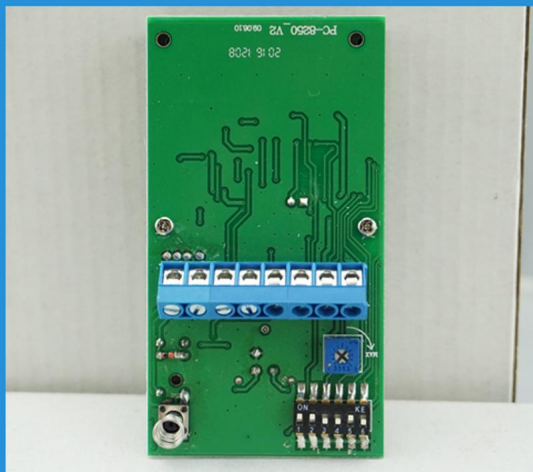
**IN-KIND SHOOTING**











## APPLICATION



**This model wired motion detector product is widely use in all kinds of burglar alarm system, Such as Villa ,Home ,Factory, Warehouse, Office, Bank etc.**

**Related Items**



## SHOW CASE



## Company Information

## OFFICE SHOW



## CUSTOMER



## EXHIBITION

2011 Brazil Fair



2012 shen yang Fair



2013 Jinan Fair



2013 Shenzhen Fair



2012 shen yang Fair



2013 shen yang Fair



2013 Shenzhen Fair



2015 Shenzhen Fair





# CERTIFICATE



# HOW TO COOPERATION



<b>Trade terms:</b>	<b>EXW</b>
<b>Payment terms:</b>	<b>T/T, Western union, Paypal etc</b>
<b>Delivery time:</b>	<b>Normal order within 7 days, bulk order 10-15days</b>
<b>Packing:</b>	<b>Neutral paper box and paper carton</b>
<b>Shipping:</b>	<b>Express company or by sea, by air or appointed by buyer</b>



## FAQ

## FAQ

### **Q: Can I have a sample order?**

**A:** Yes, we are willing to offer trial sample order to you for quality test. Mixed samples are acceptable.

### **Q: What is the lead time?**

**A:** Sample needs 1-3 working days, mass production time needs 10-15 working days for order less than 5000pcs.

### **Q: Do you have any MOQ limit?**

**A:** EXW MOQ is 100pcs under blank box.

### **Q: How do you ship the goods and how long does it take arrive?**

**A:** The sample will be sent to you by optional shipping service (couriers, air, and sea). The delivery time depends on the shipping service.

### **Q: How will we proceed the order if I have logo to print?**

**A:** Firstly, we will prepare artwork for visual confirmation. If the color and position are right, we would make sampling firstly from silk print factory and take picture for your second confirmation before mass production.

### **Q: Does alarm panel work with any sensor?**

**A:** The alarm panel can work with all dry contact wired detectors and wireless detector, including almost all of the wireless sensors from Chinese manufacturers. The wireless encode and decode is EV1527 or our wireless sensors.

