

Pet Immune Wired Passive Infrared PIR Sensor EB-182



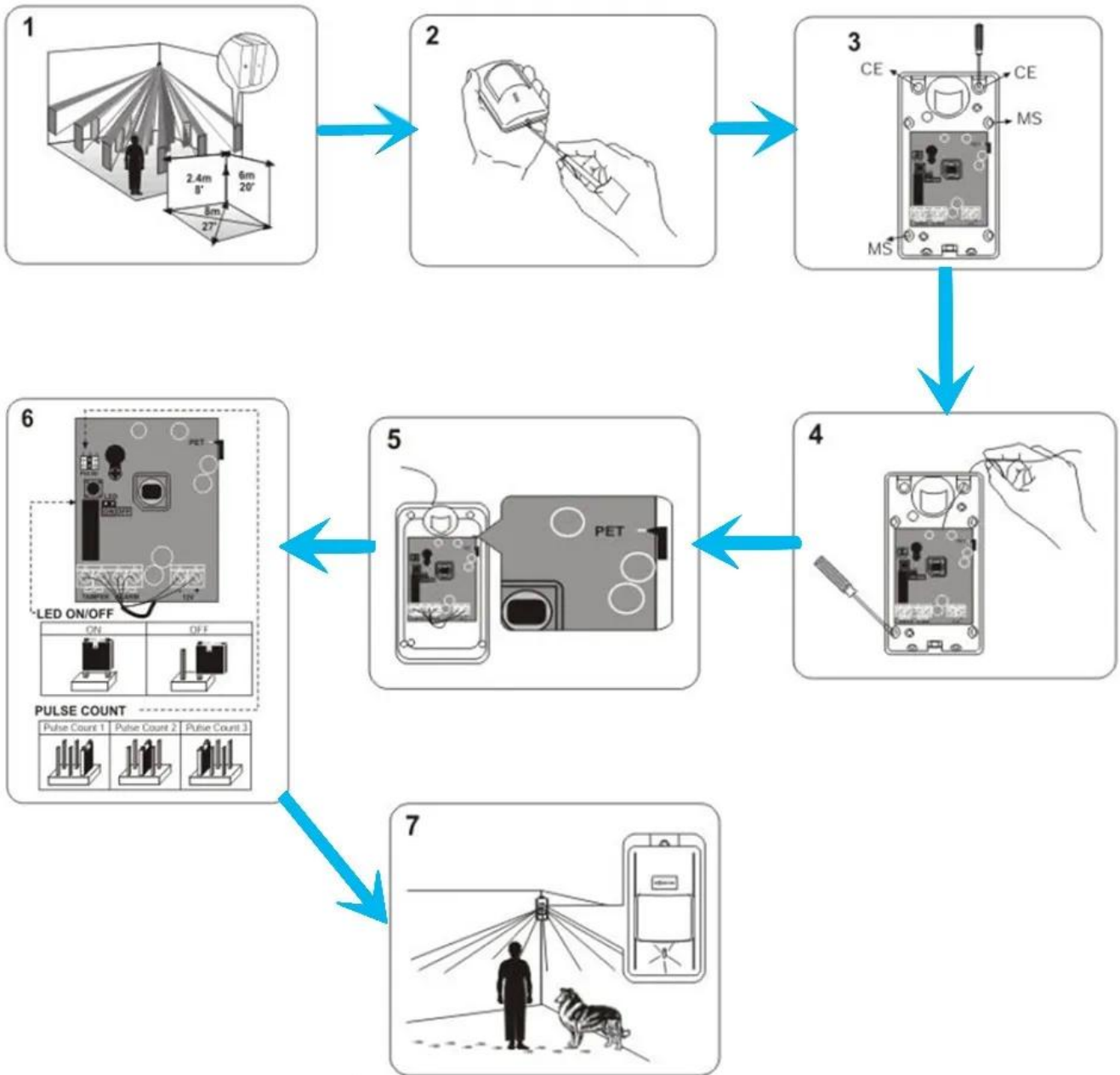
EB-182's main parameter

Parameter

Name	Good quality wired pet-immune PIR detector for burglar alarm system
Model	EB-182
Dimension	107*59*40(mm)
Operating voltage	DC 9~16V
Consumption current	12mA, 12V DC
Detecting distance	12m
Detecting angle	110°
Installation mode	wall-mounted
Installation height	about 2.2m
LED	ON/ OFF(optional)
OEM	Print logo, etc
Alarm output	NO/NC
Material	Fireproof ABS housing
Suitable range	Home and office anti-theft



How to installation?



How about other choice?

SMQT
铭汗科技



SMQT
铭汗科技



SMQT
铭汗科技



SMQT
铭汗科技



SMQT
铭汗科技



SMQT
铭汗科技



SMQT
铭汗科技



SMQT
铭汗科技



SMQT
铭汗科技

