

# High Sensitivity 9~16V DC Triple Technology Infrared+Microwave+CPU PIR Motion Sensor

## Product Introduction



Specification	
Product name	High Sensitivity 9~16V DC Triple Technology Infrared+Microwave+CPU PIR Motion Sensor
Model	EB-173
Size	130*63*45(mm)
Working voltage	9~16V DC
Working Current	30MA
Detecting angle	110°
Working temperature	-20℃~50℃
Detecting speed	0.2~7m/sec
Install Height	2.2m
Storage temperature	-25℃~65℃
Sensitivity	Adjustable

<b>PIR Feature</b>	Infrared sensro type :Dual elements PIR sensor Auto temperature compensation:NIC compensation Detecting distance:12m Detecting angle:110° Alarm duration:PULSE1:10sec. PULSE2:30 sec
<b>Microwave feature</b>	Microwave antenna type:Flat strip microwave antennea with FET oscillator Frequency:FCC&DOC10.525GHz Detecting method:Doppler(effect)move Theiries:Dopper(effect)+Energies nalysis Digital filter:50/60Hz Self-test:Microwave self-test function MCU type:8 bit microchip
<b>Alarm indicator</b>	Red LED Light(close if need)
<b>Alarm output</b>	NC/NO optional,28V DC,80mA
<b>Anti-tamper switch</b>	NC,28V DC,0.15A
<b>Operating humidity</b>	95%
<b>Color</b>	White
<b>Weight</b>	0.15kg

#### Product Feature

**What's the features of our Infrared+Microwave+CPU PIR Motion Sensor ?**



1. Triple Technology PIR Motion Sensor(Infrared+Microwave+CPU)

2. DC 9~16V power supply

3. PIR+Microwave dual detecting device

4. 12m detecting distance

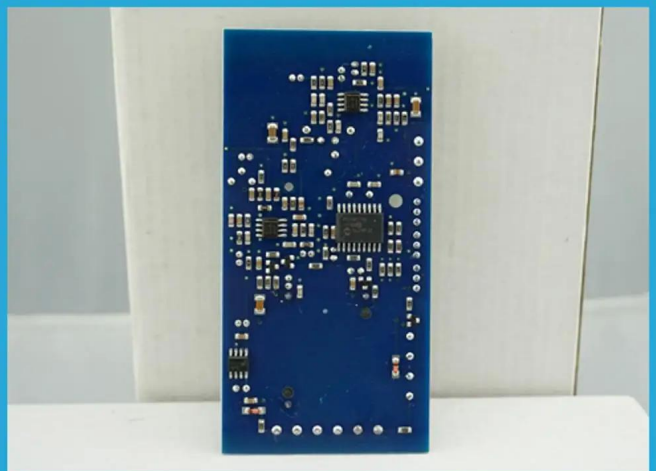
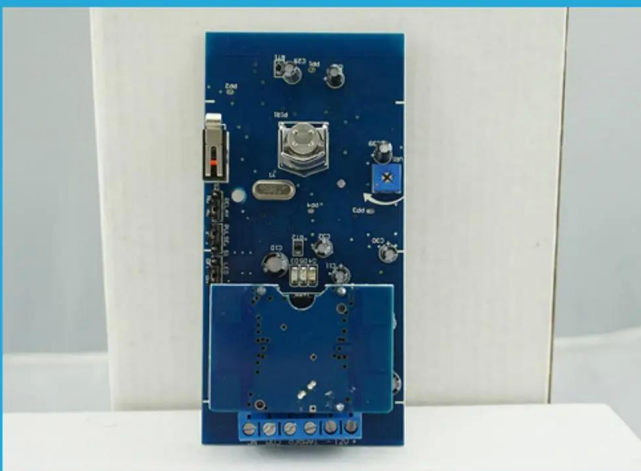
5. 2 years warranty , welcome OEM

### Features

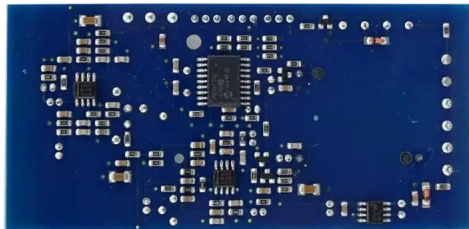
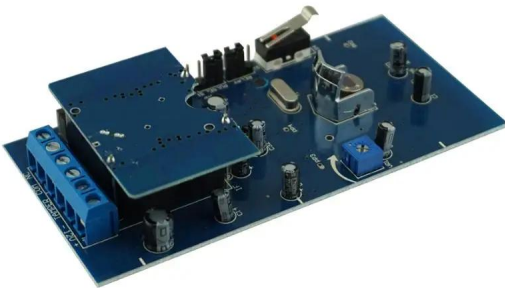
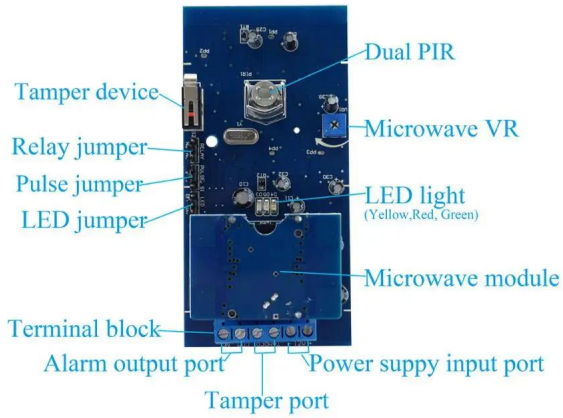
1. Microwave&Passive infrared+CPU Motion detector, with perfect streamline surface design.
2. Adopted dual elements infrared sensor, microwave sensor, digital processing technology.
3. High reliability from perfect technical stability and design.

### Product Display

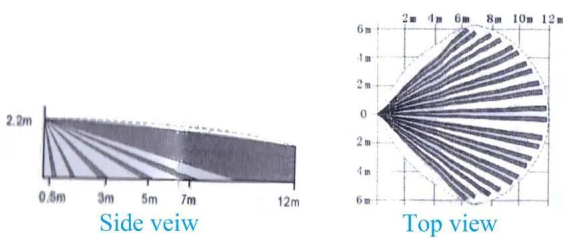
**IN-KIND SHOOTING**



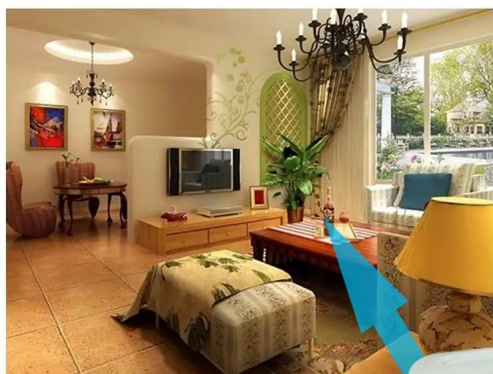
APPLICATION



Detection zone:







**This model wired motion detector product is widely use in all kinds of burglar alarm system, Such as Villa ,Home ,Factory, Warehouse, Office, Bank etc.**



## Show Cases

SHOW CASES





## Company Information

OFFICE SHOW



## CUSTOMERS



## EXHIBITION

2011 Brazil Fair



2012 shen yang Fair



2013 Jinan Fair



2013 Shenzhen Fair



2012 shen yang Fair



2013 shen yang Fair



2013 Shenzhen Fair



2015 Shenzhen Fair



## CERTIFICATION







## PACKAGING & SHIPPING

Detection+Packing+Sealing+Finishing+International Express



Inquiry



Contract



Testing and packing



Receiving



Reply

Receive payment&Product

Delivery



## FAQ

## FAQ

**Q:Can I have a sample order?**

**A:Yes, we are willing to offer trial sample order to you for quality test. Mixed samples are acceptable.**

**Q:What is the lead time?**

**A:Sample needs 1-3 working days, mass production time needs 10-15 working days.**

**Q:What is your MOQ?**

**A:No MOQ limit.The more quantity the more discounts.**

**Q:How do you ship the goods and how long does it take arrive?**

**A:The sample will be sent to you by optional shipping service (couriers, air, and sea),or appointed by buyer,7-15 days.**

**Q:How will we proceed the order if I have logo to print?**

**A:Firstly, we will prepare artwork for visual confirmation. If the color and position are right, we would make sampling firstly from silk print factory and take picture for your second confirmation before mass production.**

***How to contact us?  
Click the enter send us inquiry below.***