

## Metal IP67 13.56MHz/125Khz Access Controller Keypad for Harsh Environment with WG output



### MQ-806's main parameter

Product name:	IP67 Waterproof Metal Keypad Access Control/Wiegand Reader for Single Door with 5000 user capacity	
Model:	<b>MQ-806C</b>	<b>MQ-806D</b>
RFID frequency:	<b>IC(13.56Mhz)</b>	<b>ID(125Khz)</b>
Reading distance:	0~3cm	
User capacity:	<b>5000</b>	
Power supply:	DC 12V	
Working mode:	<b>Access control mode/ WG card reader mode(adjustable)</b>	
Working current:	≤200mA	
Static current:	≤150mA	
Door open time:	0~99s(adjustable)	
Working temperature:	-20℃~60℃	
Working humidity:	20%~80%	
Storage temperature:	-20℃~60℃	
Dimension:	<b>120x80x22mm (error ± 3mm)</b>	
Color:	Silver	

Weight:	0.458kg
---------	---------

What feateurs MQ-806 have?

Size

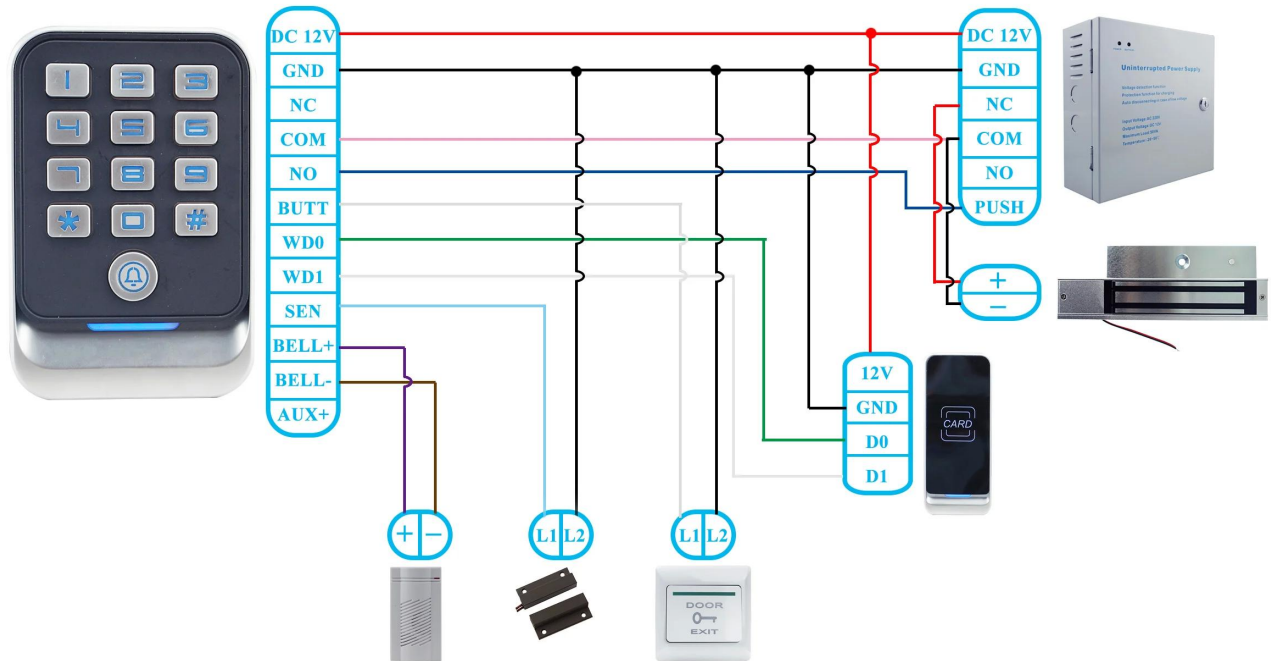


Appearance

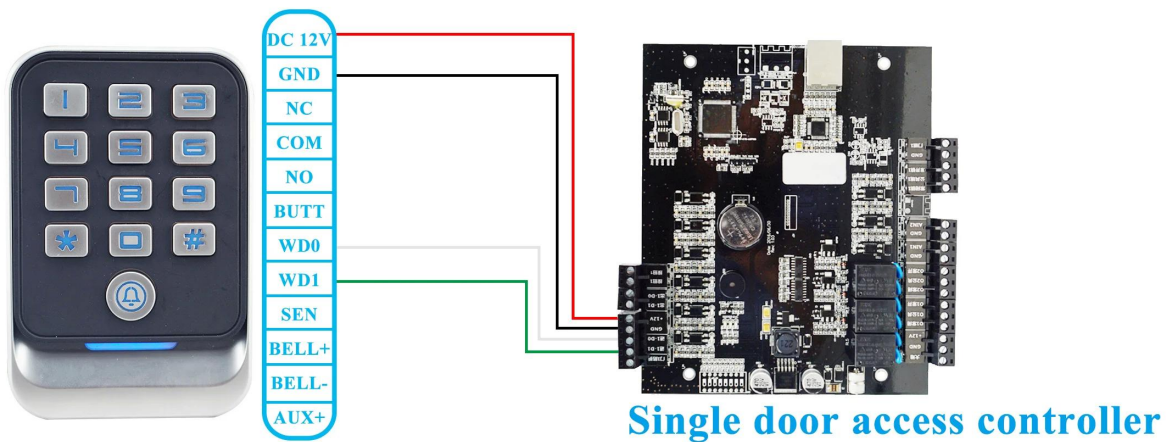


# Wire diagram

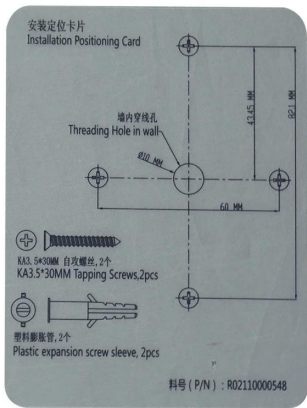
## Access control mode:



## Card reader mode:



# Package list



How about other choice?



