

Metal IP67 13.56MHz/125Khz Access Controller Keypad for Harsh Environment with WG output



MQ-806's main parameter

| | | |
|----------------------|--|-------------------|
| Product name: | IP67 Waterproof Metal Keypad Access Control/Wiegand Reader for Single Door with 5000 user capacity | |
| Model: | MQ-806C | MQ-806D |
| RFID frequency: | IC(13.56Mhz) | ID(125Khz) |
| Reading distance: | 0~3cm | |
| User capacity: | 5000 | |
| Power supply: | DC 12V | |
| Working mode: | Access control mode/ WG card reader mode(adjustable) | |
| Working current: | ≤200mA | |
| Static current: | ≤150mA | |
| Door open time: | 0~99s(adjustable) | |
| Working temperature: | -20℃~60℃ | |
| Working humidity: | 20%~80% | |
| Storage temperature: | -20℃~60℃ | |
| Dimension: | 120x80x22mm (error ± 3mm) | |

| | |
|---------|---------|
| Color: | Silver |
| Weight: | 0.458kg |

What feateurs MQ-806 have?

Size

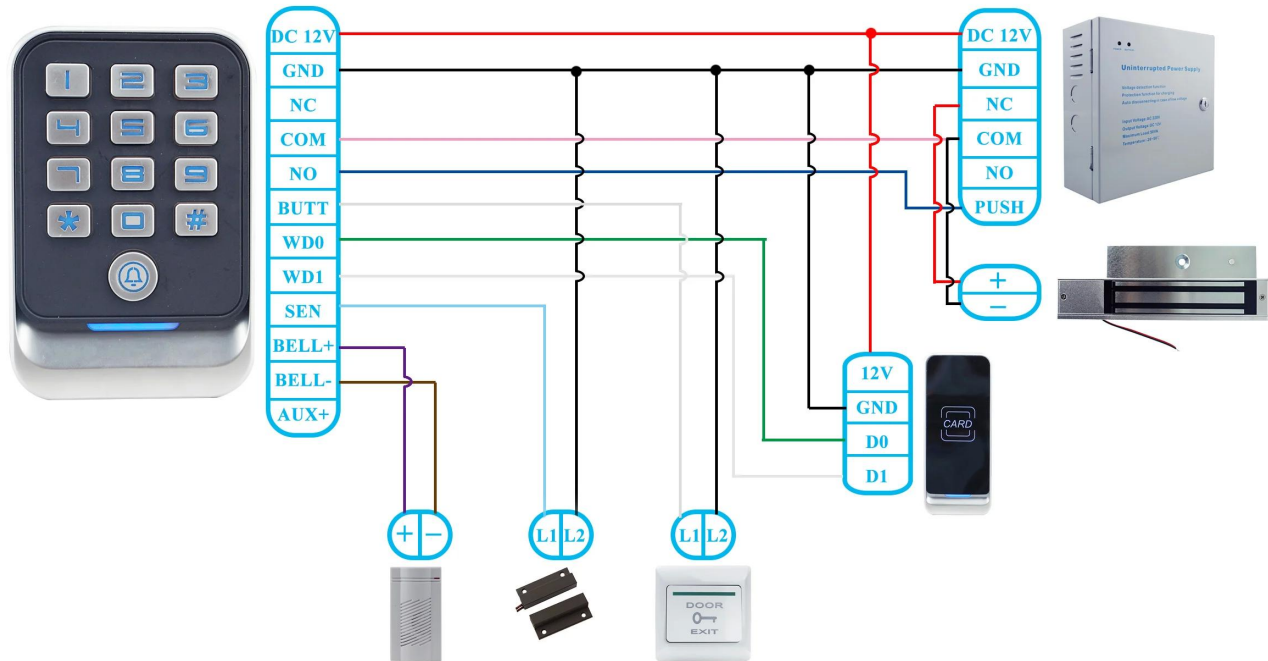


Appearance

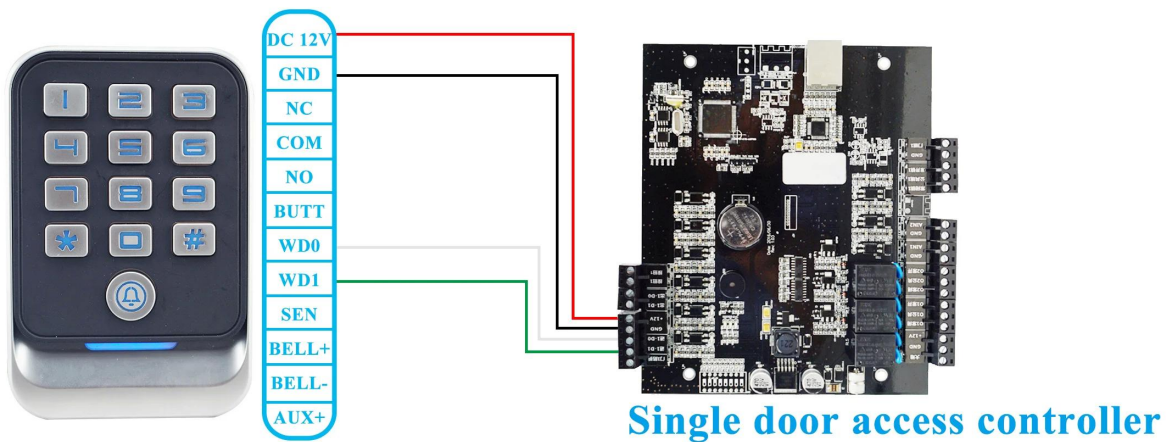


Wire diagram

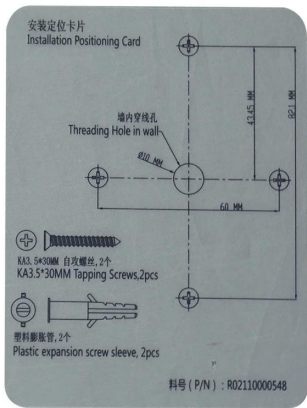
Access control mode:



Card reader mode:



Package list



How about other choice?

