

Indoor Wall mounted Infrared+Microwave function PIR Motion Sensor

Product Introduction



Specification	
Product name	Indoor Wall mounted Infrared+Microwave function PIR Motion Sensor
Model	EB-172
Size	128*65*41(mm)
Working voltage	9~13.5V DC
Static current	25uA(Under 12V DC power supply)
Alarm current	15mA(Under 12V DC power supply)
MW coverage	12*12m, sensitivity 30%~100% adjustable
PIR coverage	12*12m
Detecting angle	110°
Working temperature	-10°C~50°C
Storage temperature	-25°C~65°C
Anti-EMI	>300V/M
Anti-light interference	>6500LUX
Color	White

Weight	0.1kg
---------------	--------------

Product Feature

What's the features of our Infrared+Microwave function PIR Motion Sensor?



1.Wired MW+PIR intelligent motion detector

2.9~13V DC power supply

3.3 LED indicator light

4.Compatible all kinds of alarm system's wired zones

5.2 years warranty , welcome OEM

1. Microwave and passive infrared detection and combined digital analysis (patent) with fuzzy logic. Eliminate interference than all kinds of conventional detectors can not overcome, only to make a real human movement alarm to prevent misinformation and omission. This function is much superior to the set of infrared detectors without the microwave characteristic.
2. Uses a patented full range of precise temperature compensation, no matter how the ambient temperature changes, the constant detection sensitivity, the dead zone temperature (usually the detector, at 32 °C ~ 40 °C sensitivity is significantly

reduced or easily mistaken in other warm zones).

3. Parented adaptive FM technology of microwave and linear distribution, can filter the suspension of the electrophone and other interference.

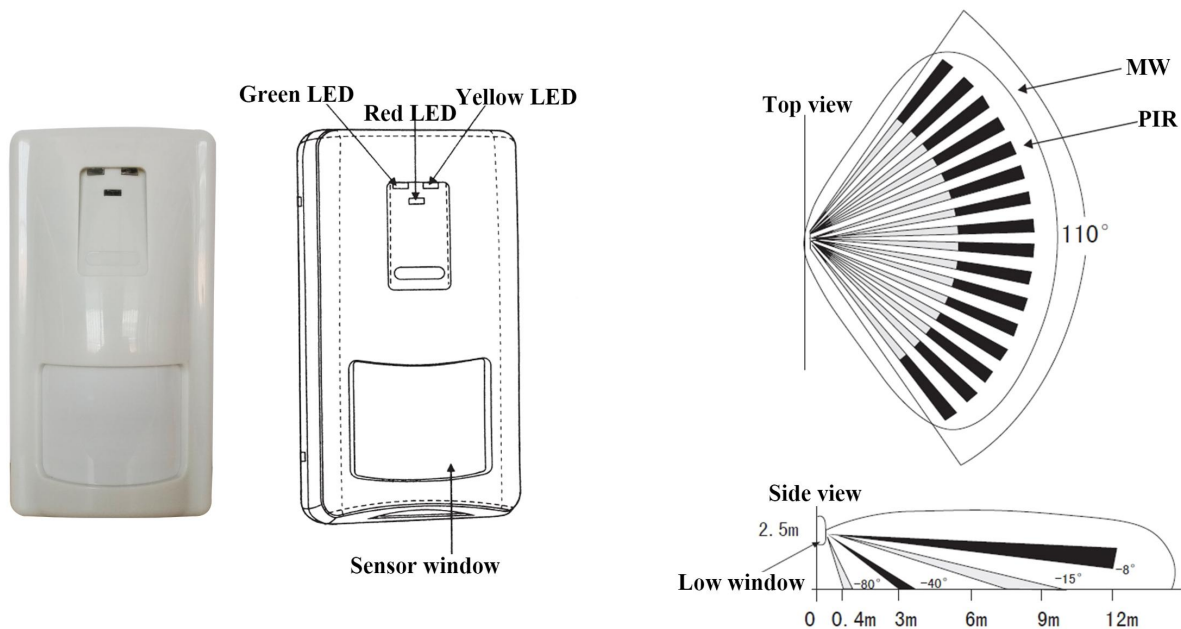
4. The interference prevention technology can be provided by the Triple-tech intrusion detector in the same space without mutual interference, even two detectors are installed relatively.

Product Display

IN-KIND SHOOTING



APPLICATION

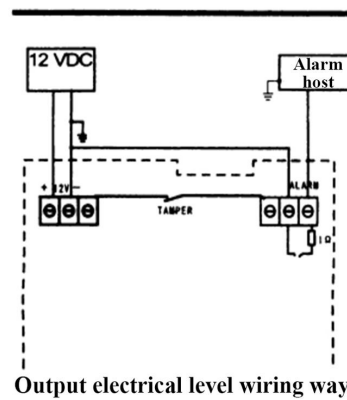
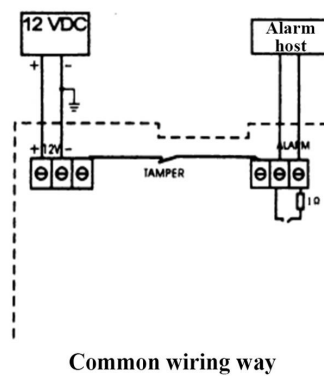
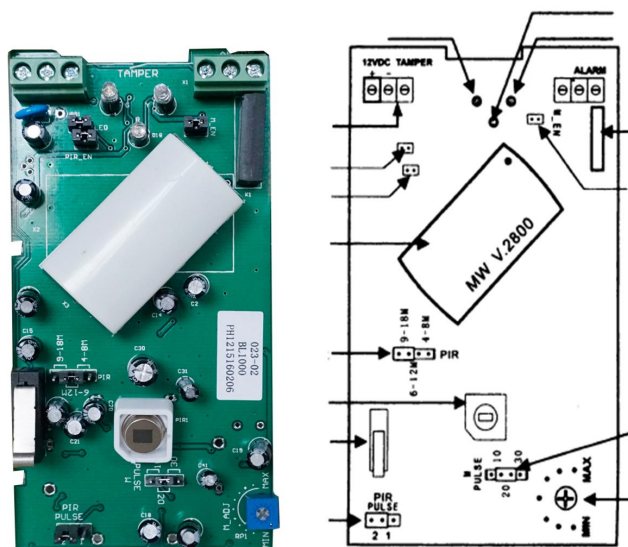


Apperance

Detecting distance

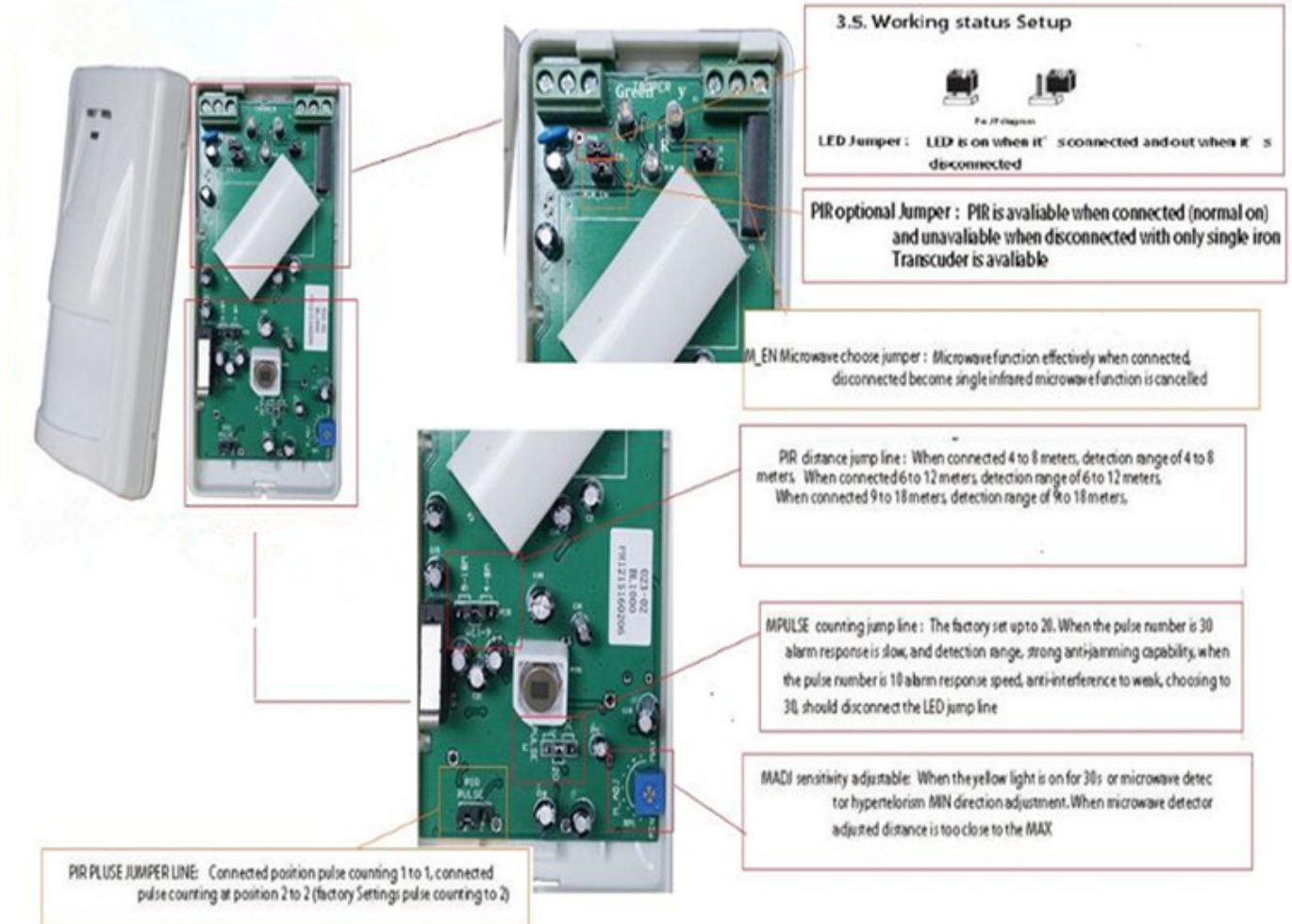
MW+PIR+Intelligent Motion Detector

EB-172



PCB board

Wiring way



Show Cases

SHOW CASES



Company Information

OFFICE SHOW



CUSTOMERS



EXHIBITION

2011 Brazil Fair



2012 shen yang Fair



2013 Jinan Fair



2013 Shenzhen Fair



2012 shen yang Fair



2013 shen yang Fair



2013 Shenzhen Fair



2015 Shenzhen Fair



CERTIFICATION



Our Services

HOW TO COOPERATE



PACKAGING & SHIPPING

Detection+Packing+Sealing+Finishing+International Express



Inquiry



Contract



Testing and packing



Receiving



Reply

Receive payment&Product

Delivery



FAQ

FAQ

Q:Can I have a sample order?

A:Yes, we are willing to offer trial sample order to you for quality test. Mixed samples are acceptable.

Q:What is the lead time?

A:Sample needs 1-3 working days, mass production time needs 10-15 working days.

Q:What is your MOQ?

A:No MOQ limit.The more quantity the more discounts.

Q:How do you ship the goods and how long does it take arrive?

A:The sample will be sent to you by optional shipping service (couriers, air, and sea),or appointed by buyer,7-15 days.

Q:How will we proceed the order if I have logo to print?

A:Firstly, we will prepare artwork for visual confirmation. If the color and position are right, we would make sampling firstly from silk print factory and take picture for your second confirmation before mass production.

***How to contact us?
Click the enter send us inquiry below.***