

Wired magnetic door sensor

Fireproof ABS material housing

20±5(mm) gap

Max voltage≤100V DC,Max current≤500mA

Use for wooden door or window

White/Black color optional

SMQT®



• Parameter

SMQT®

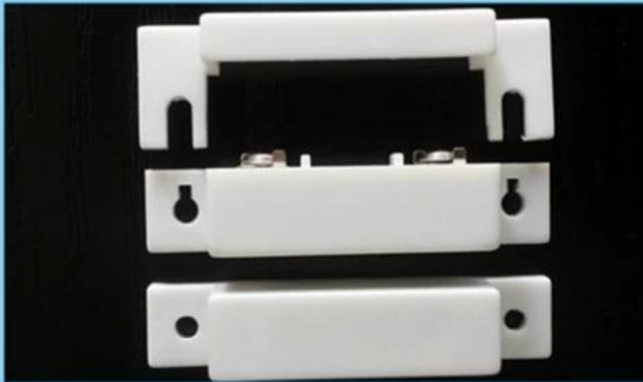
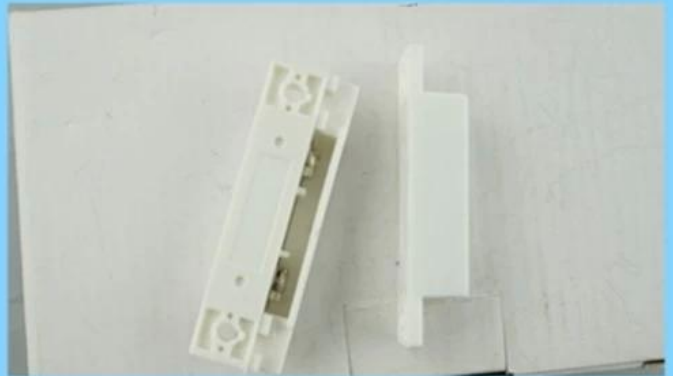
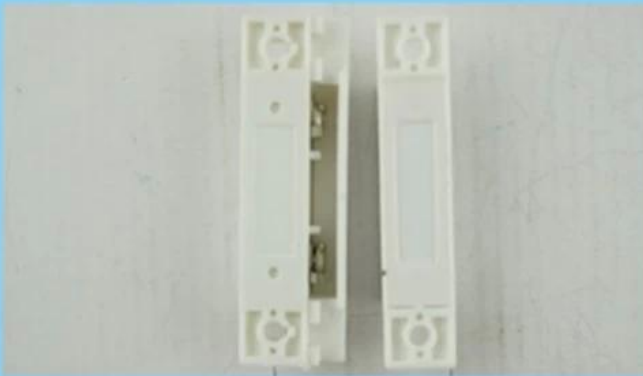
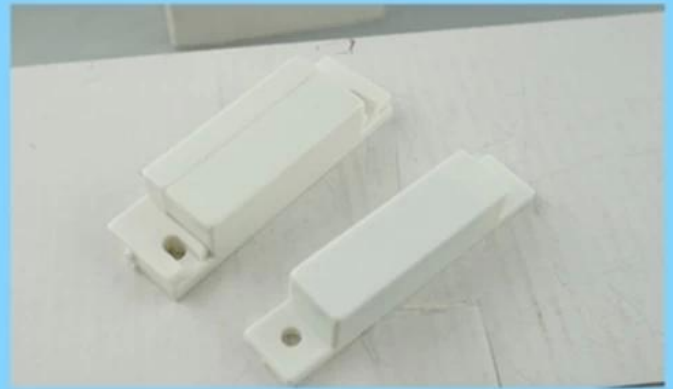
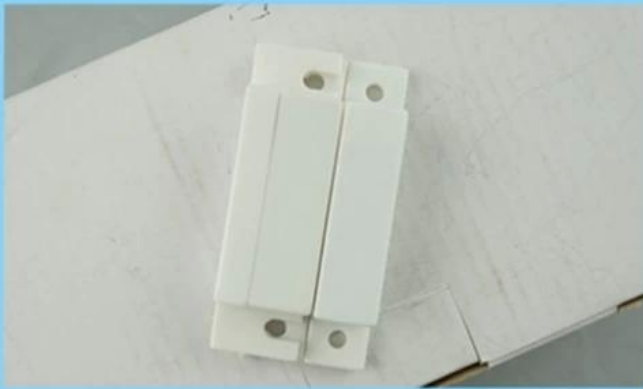
Dimensions	64L * 19W * 13H (mm)
Connection	Normally open / normally closed
Operating distance	20 ± 5 (mm)
Maximum pressure	≤100VDC
Load current	≤500mA
Working Power	≤10W
Housing Material	ABS fireproof material shape
Colour	Brown / White
Scope	Non-ferrous door or window
product weight	24g

• Introduction

SMQT®

The magnetic door contact switch is the wired door sensor and window sensor for door access control and alarm system.

PRODUCT PICTURE



PRODUCT FEATURE



White



Brown

2 Color optional

Dimension: 64×19×13(mm)

NO/NC mode optional

20±5(mm) gap

MAX voltage ≤ 110VDC, MAX current ≤ 500mA

Fireproof ABS material housing

Suitable for wooden door or window

Brown/ White color optional

Weight: 24g

2 years quality warranty, welcome OEM



• Office show

SMQT®



• Exhibition

SMQT®

2011 Brazil Fair



2012 Shenyang Fair



2013 Jinan Fair



2013 Shenzhen Fair



.....

2012 Shenyang Fair



2013 Shenyang Fair



2013 Shenzhen Fair



2015 Shenzhen Fair

