

Wired magnetic contact sensor

Fireproof ABS material shell

NO/NC model optional

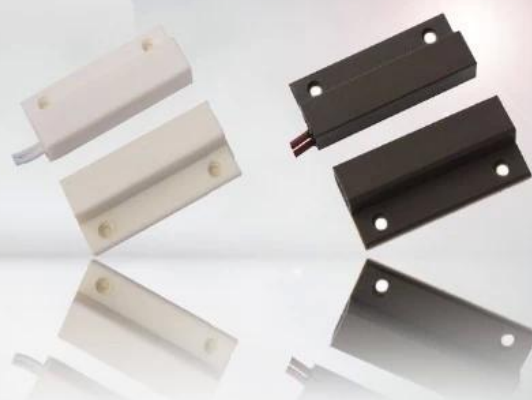
Brown/white color optional

20±5(mm) gap distance

Suitable wooden door or window

14g weight

SMQT®



• Parameter

SMQT®

Dimensions	41L * 27W * 8 (mm)
Connection	Normally open / normally closed
Operating distance	20 ± 5 (mm)
Maximum pressure	≤100VDC
Load current	≤500mA
Working Power	≤10W
Housing Material	ABS fireproof material
Shape color	Brown / White
Scope	Non-ferrous door or window
product weight	12g

• Introduction

SMQT®

The door magnetic contact switch detector is the door motion sensor for door open proximity sensor alarm device.

PRODUCT PICTURE



PRODUCT FEATURE



Dimension: 34×41×6.5(mm)

NO/NC mode optional

20±5(mm) distance gap

MAX voltage ≤ 100VDC, MAX current ≤ 500mA

Fireproof ABS material shell

White/Brown color optional

Suitable for wooden door or window

14g weight

2 years quality warranty, welcome OEM



• Office show

SMQT®



• Exhibition

SMQT®

2011 Brazil Fair



2012 Shenyang Fair



2013 Jinan Fair



2013 Shenzhen Fair



2012 Shenyang Fair



2013 Shenyang Fair



2013 Shenzhen Fair



2015 Shenzhen Fair



.....