

Magnetic contact switch

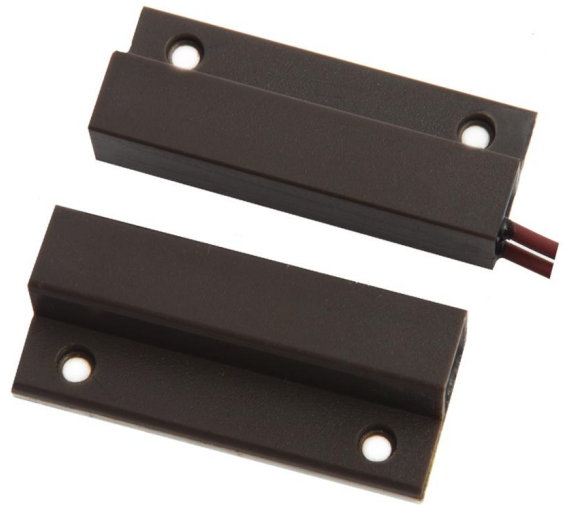
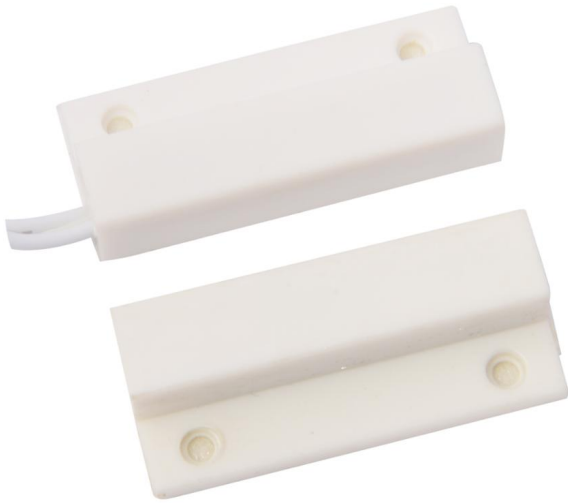
SMQT

New

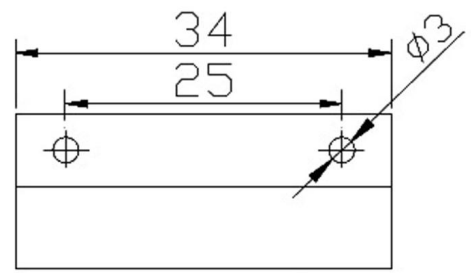
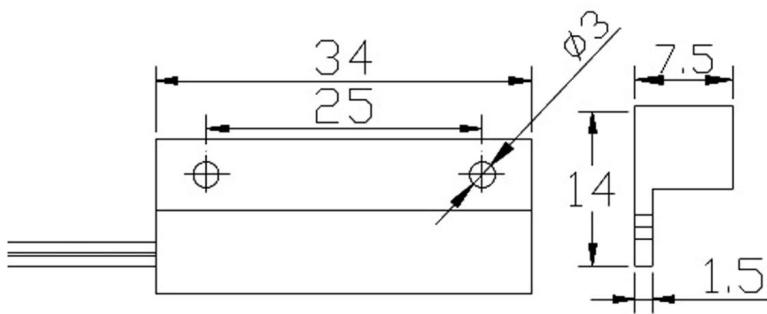
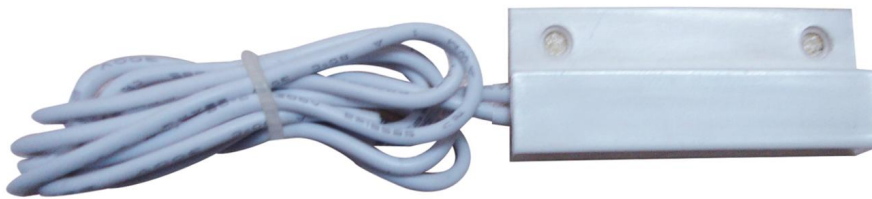
Access control & Alarm product supplier



2 Color optional

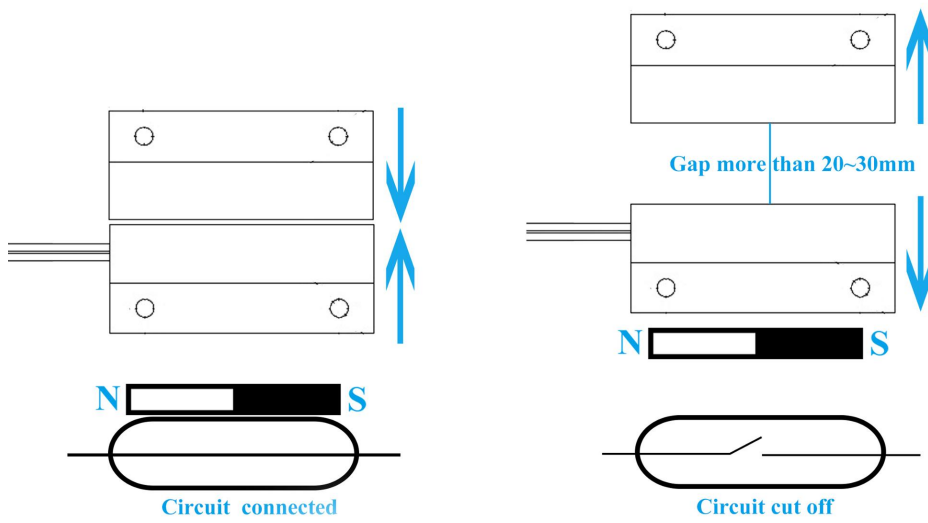


Size

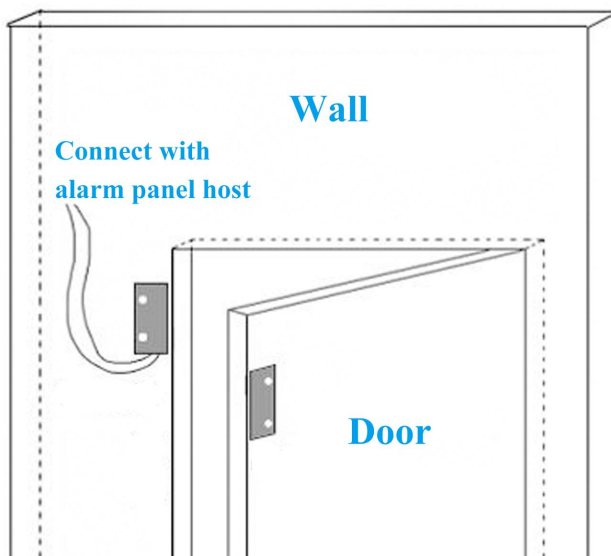


mm

NC mode working principle



Installation



Packaging

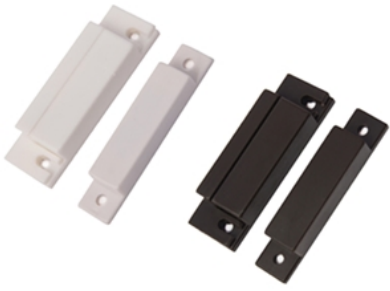


EB-132'S MAIN PARAMETER

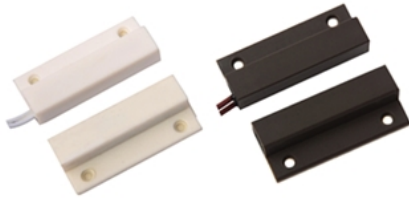
Product Name:	Magnetic contact switch
Model number:	EB-132
Working voltage:	Max DC 100
Working current:	Max 0.5A
Power consumption:	10W
Interface port:	NC/COM
Induction gap:	20~30mm
Size:	Reed part:34*14*7.5(mm) Magnet part:34*14*7.5(mm)
Suitable for:	All kinds of door access control system and burglar alarm system
Material:	ABS housing+ PCB board+Reed switch
Housing color:	White/Brown(optional)
Weight:	Unit:12g 20 pairs per bag, per bag weight 250g
Warranty:	2 years warranty
OEM:	Welcome OEM

HOW ABOUT OTHER CHOICE?

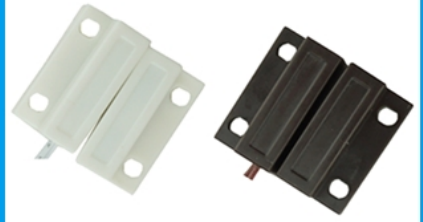
SMQT
铭汗科技



SMQT
铭汗科技



SMQT
铭汗科技



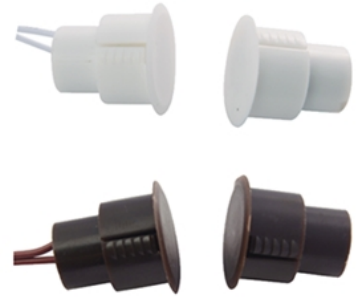
SMQT
铭汗科技



SMQT
铭汗科技



SMQT
铭汗科技



SMQT
铭汗科技



SMQT
铭汗科技



SMQT
铭汗科技

