



Product introduction

Specification	
Product name	Wall mounted PIR detector
Model	EB-170
Size	130*68*45(mm)
Working voltage	12V DC
Detecting angle	110°
Working temperature	-20℃~50℃
Detecting speed	0.2~7m/sec
Install Height	2.2m
Storage temperature	-25℃~65℃
Alarm indicator	Red LED Light(close if need)
Alarm output	NC,28V DC,0.15A
Anti-tamper switch	NC,28V DC,0.15A
Operating humidity	95%
Color	White
Weight	0.1kg

what features of our EB-170?



1.Wired Infrared PIR Motion Sensor

2.DC 12V power supply.

3.12m detecting distance.

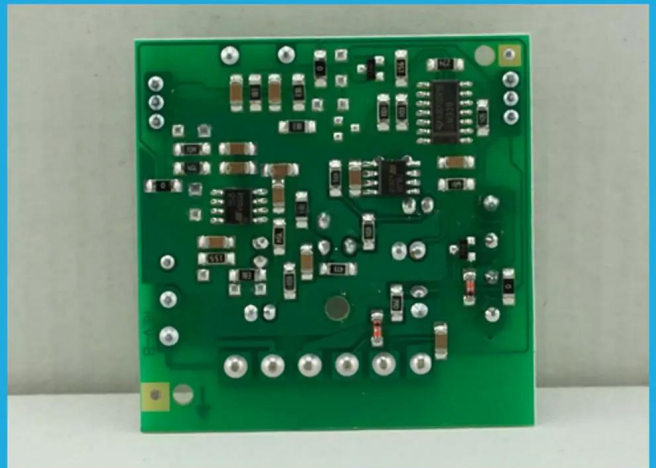
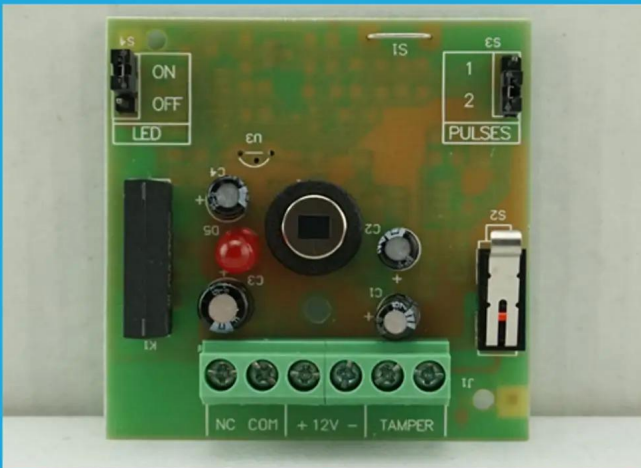
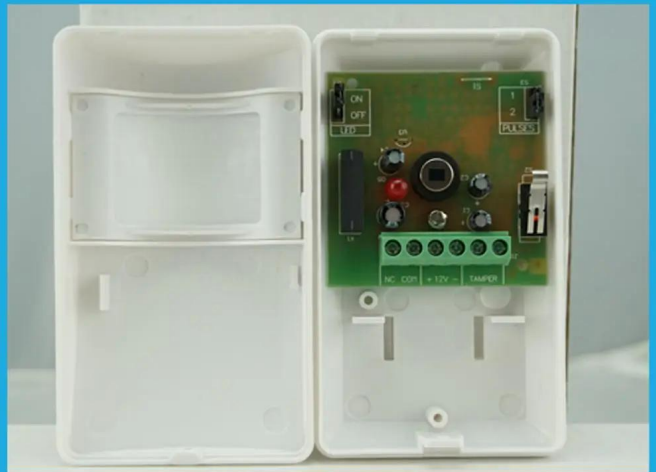
4.2.2m installation height.

5.2 years warranty , welcome OEM.

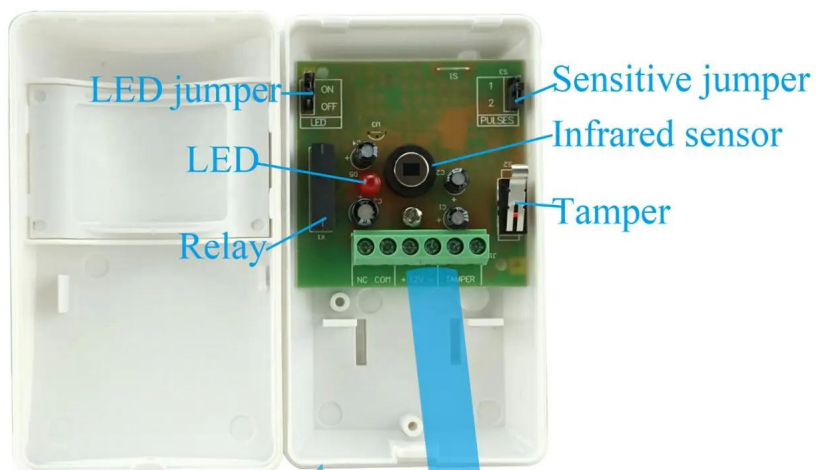
Product Picture



IN-KIND SHOOTING







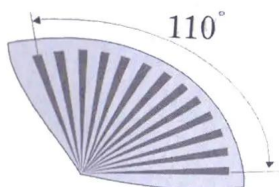
Alarm relay output port

Power supply input port

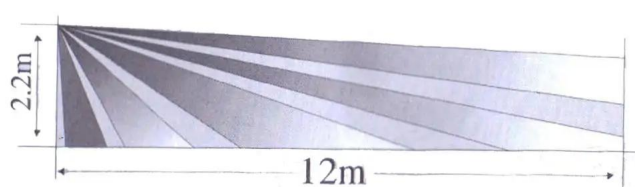
Anti-Tamper output port

Detection zone:

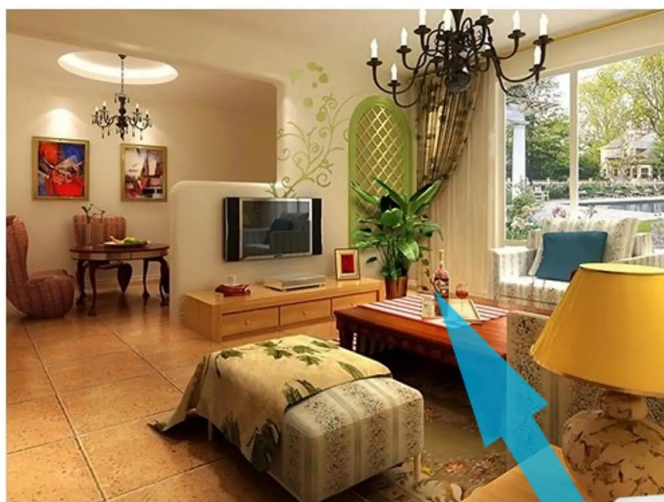
Top view



Side view



APPLICATION



This model wired motion detector product is widely use in all kinds of burglar alarm system, Such as Villa ,Home ,Factory, Warehouse, Office, Bank etc.

Related Items

RELATED ITEMS

<div>SMQT™</div> <div></div> <div>CE RoHS FC</div>	<div>SMQT™</div> <div></div> <div>CE RoHS FC</div>	<div>SMQT™</div> <div></div> <div>CE RoHS FC</div>
<div>SMQT™</div> <div></div> <div>CE RoHS FC</div>	<div>SMQT™</div> <div></div> <div>CE RoHS FC</div>	<div>SMQT™</div> <div></div> <div>CE RoHS FC</div>
<div>SMQT™</div> <div></div> <div>CE RoHS FC</div>	<div>SMQT™</div> <div></div> <div>CE RoHS FC</div>	<div>SMQT™</div> <div></div> <div>CE RoHS FC</div>

Packing & shipping

PACKING & SHIPPING



Company Information

OFFICE SHOW



CUSTOMER



EXHIBITION

2011 Brazil Fair



2012 shen yang Fair



2013 Jinan Fair



2013 Shenzhen Fair



2012 shen yang Fair



2013 shen yang Fair



2013 Shenzhen Fair



2015 Shenzhen Fair

CERTIFICATION



FAQ

FAQ

Q: Can I have a sample order?

A: Yes, we are willing to offer trial sample order to you for quality test. Mixed samples are acceptable.

Q: What is the lead time?

A: Sample needs 1-3 working days, mass production time needs 10-15 working days for order less than 5000pcs.

Q: Do you have any MOQ limit?

A: EXW MOQ is 100pcs under blank box.

Q: How do you ship the goods and how long does it take arrive?

A: The sample will be sent to you by optional shipping service (couriers, air, and sea). The delivery time depends on the shipping service.

Q: How will we proceed the order if I have logo to print?

A: Firstly, we will prepare artwork for visual confirmation. If the color and position are right, we would make sampling firstly from silk print factory and take picture for your second confirmation before mass production.