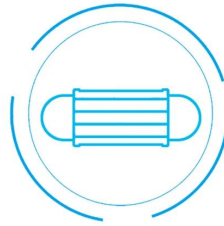
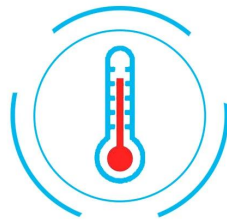
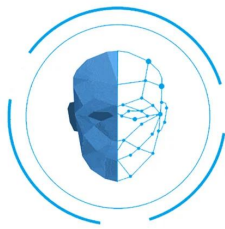
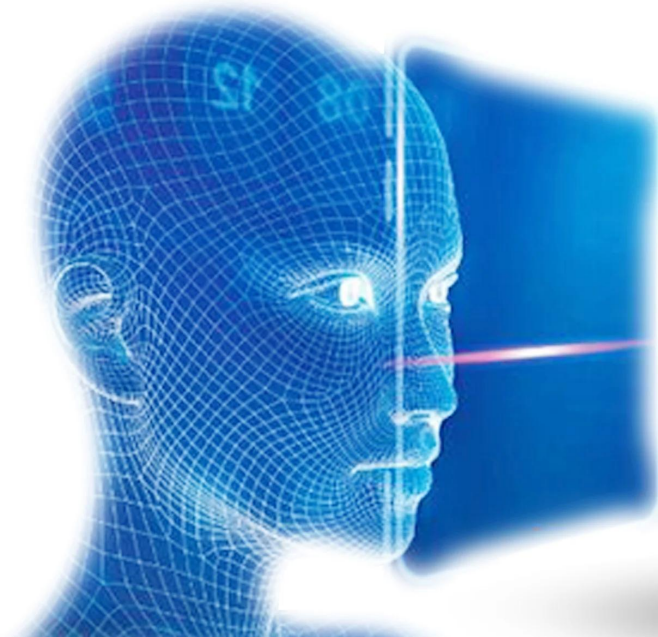


Multiple system languages Dynamic facial recognition access control device with temperature detecting function



Dynamic facial Reader

with face temperature and mask checking



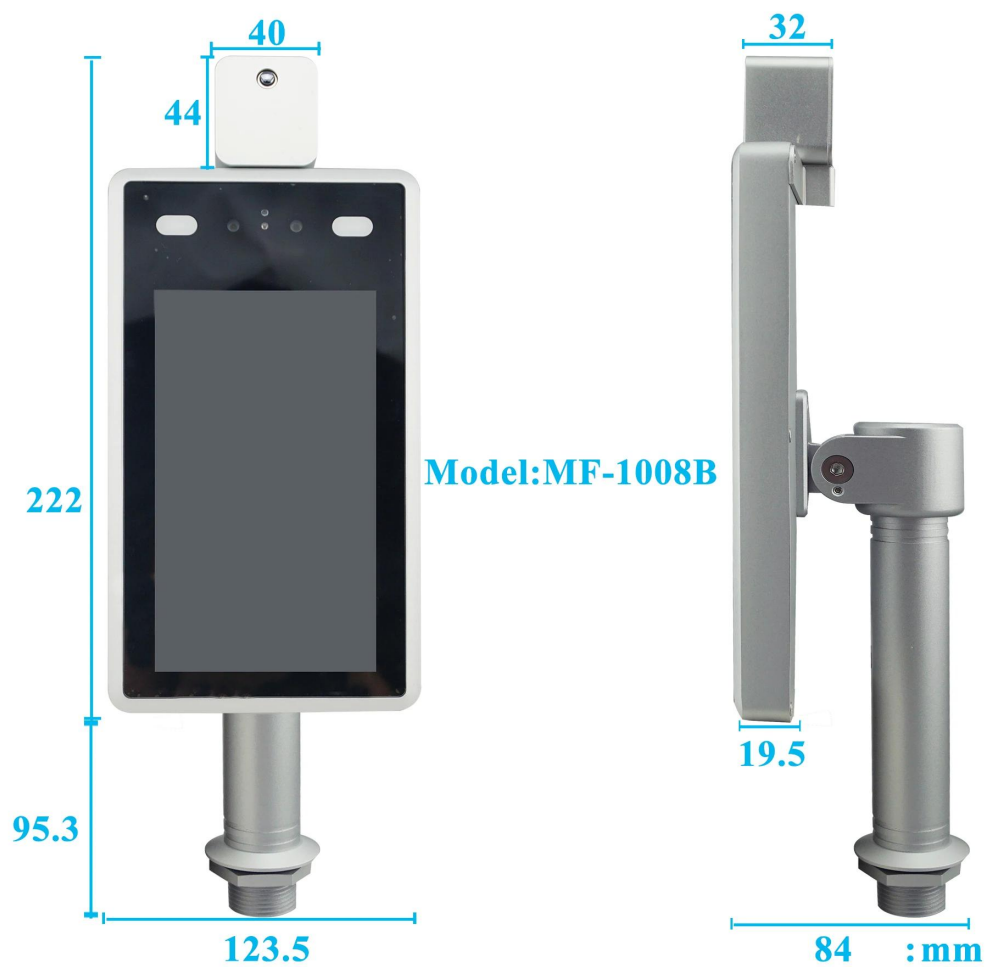
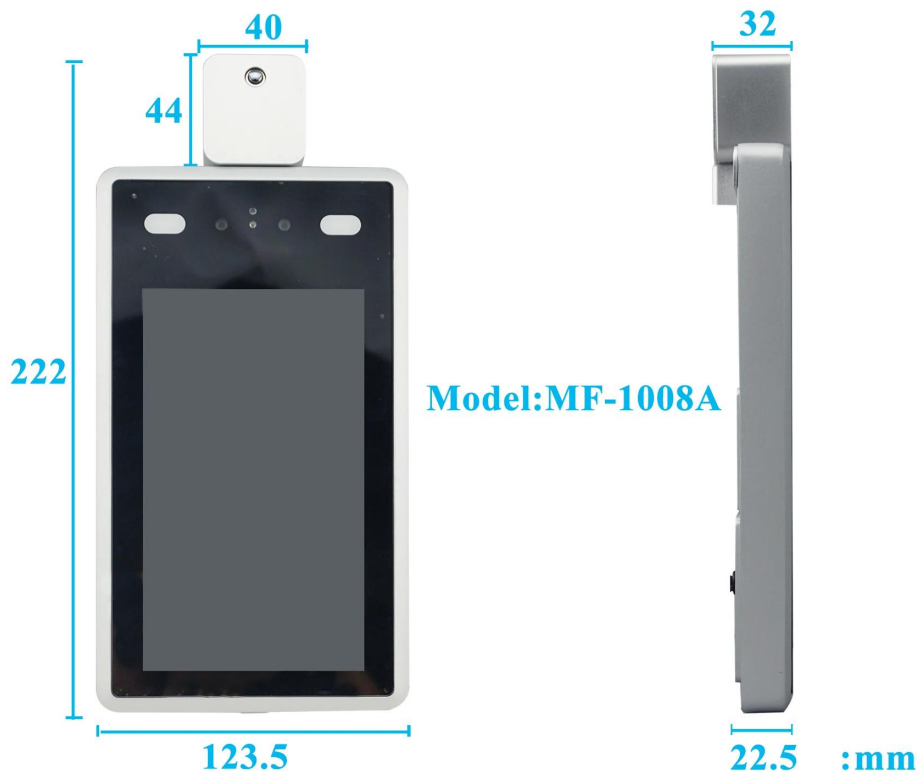
MF-T1008's main parameter

Product name	Multiple system languages Dynamic facial recognition access control device with temperature detecting function	
Model	MF-1008A	MF-1008B
Hardware		
CPU	Hi3516DV300	
System	Linux operation system	
ROM	16G EMMC	
Image sensor	1/2.7" CMOS	
Lens	4.5mm	
Monitor	7inch TFT	
Monitor resolution	600*1024	
Display	16:9	
Temperature Measurement	Infrared measurement,array testing module	
Audio output	Speaker,8Ω/2W	
Camera Parameters		

Camera	Binocular camera supports live detection	
Effective pixel	2Mega pixel,1920*1080	
Min. lux	Color 0.01Lux @F1.2(ICR);B/W 0.001Lux @F1.2	
SNR	≥50db(AGC OFF)	
WDR	≥80db	
Face Recognition		
Height	1.2-2.2 M, angle adjustable	
Distance	0.5-2 Meters	
View angle	Vertical ±40 degree	
Reco. Time	<500ms	
Function	Support 22400 faces database and 100000 records	
Temperature		
Range	30-45(°C)	
Accuracy	±0.5(°C)	
Distance	0.4M	
Response time	<500ms	
Interface		
Internet interface	RJ45 10M/100M Ethernet	
Weigand port	Support input/output 26 and 34	
Alarm output	1channel relay output	
USB port	1USB port (Can be connected to ID identifier)	
General		
Power input	DC 12V/3A	
Power consumption	20W(MAX)	
Working temperature	-15°C ~ +60°C	
Humidity	5~90%, no condense	
Dimension	123.5(W) * 45.5(H) *266(L)mm	123.5(W) * 45.5(H) *266(L)mm
Weight	1.9 kg	2.1kg

Whatfeateurs MF-T1008 have?

Size

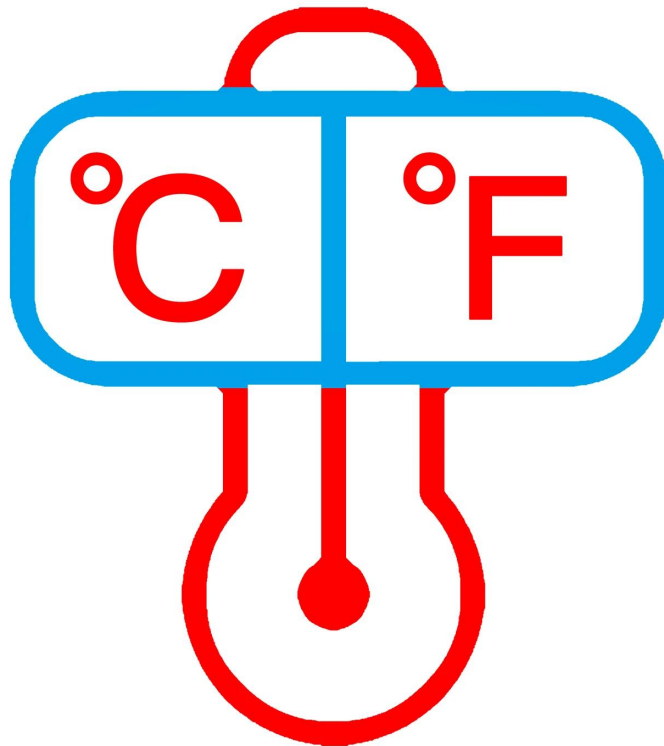


Device Feature

10 system languages and voice adjustable

English
繁体中文
русский
Deutsch
Le français
한국어
Português
Espanol
lingua italiana
日本の

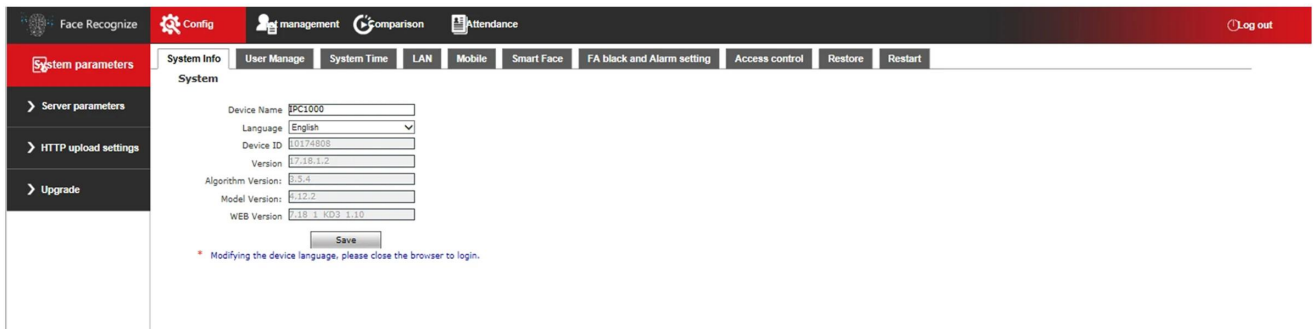
Celsius and Fahrenheit temperature display adjustable



Wire interface introduction



Browser software interface



Body temperature detecting in live



MF-1008A



MF-1008B

Temperature measurement range 30-45 (°C) Accuracy $\pm 0.5(^{\circ}\text{C})$;

Automatically identify unmasked personnel and provide real-time warning;

Support mid-range temperature measurement and real-time warning of high temperature;

Support temperature data SDK and HTTP protocol docking;

Support binocular live detection;

Unique face recognition algorithm to accurately recognize faces, face recognition;
time <500ms;

Adopt Linux operating system for better system stability;

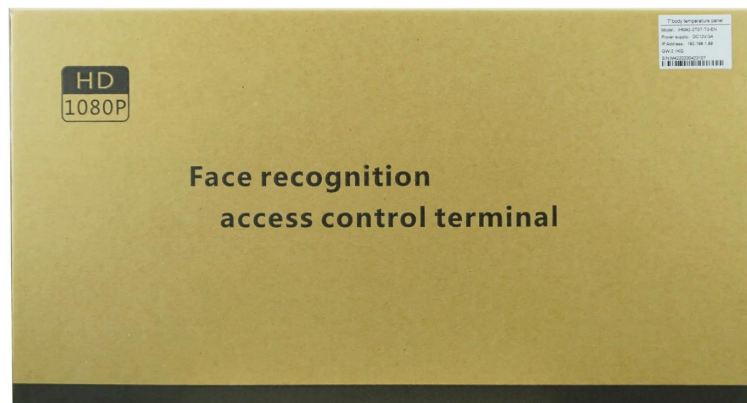
IP34 rated dust and water resistant;

MTBF> 50000 H;

Support 22400 face comparison library and 100,000 face recognition records;

Support one Wiegand input or Wiegand output;

Packages



Access control & Time attendance



Apply to a variety of **access control** and **time attendance** sites, such as factories, offices, schools, supermarkets, and so on.

How about other choice?



