

# NEW

PRODUCT THE ARRIVAL OF THE GOODS



**SMQT**

<https://eis.en.alibaba.com/>

search

THE INTERNATIONAL WEBSITE

## Specification

<b>Product name</b>	Wall mounted PIR detector
<b>Model</b>	EB-173
<b>Size</b>	130*63*45(mm)
<b>Working voltage</b>	9-16v DC
<b>Detecting angle</b>	110°
<b>Working temperature</b>	-20℃~50℃
<b>Detecting speed</b>	0.2~7m/sec
<b>Install Height</b>	2.2m
<b>Storage temperature</b>	-25℃~65℃
<b>Sensitivity</b>	adjustable
<b>PIR feature</b>	Infrared sensro type :Dual elements PIR sensor Auto temperature compensation:NIC compensation Detecting distance:12m Detecting angle:110° Alarm duration:PULSE1:10sec. PULSE2:30 sec
<b>Microwave feature</b>	Microwave antenna type:Flat strip microwave antennea with FET oscillator Frequency:FCC&DOC10.525GHz Detecting method:Doppler(effect)move Theiries:Dopper(effect)+Energies nalysis Digital filter:50/60Hz Self-test:Microwave self-test function MCU type:8 bit microchip
<b>Alarm indicator</b>	Red LED Light(close if need)
<b>Alarm output</b>	NC/NO optional,28V DC,80mA

<b>Anti-tamper switch</b>	NC,28V DC,0.15A
<b>Operating humidity</b>	95%
<b>Color</b>	White
<b>Weight</b>	0.15kg

### what features of our EB-173?



1. Triple Technology PIR Motion Sensor(Infrared+Microwave+CPU)

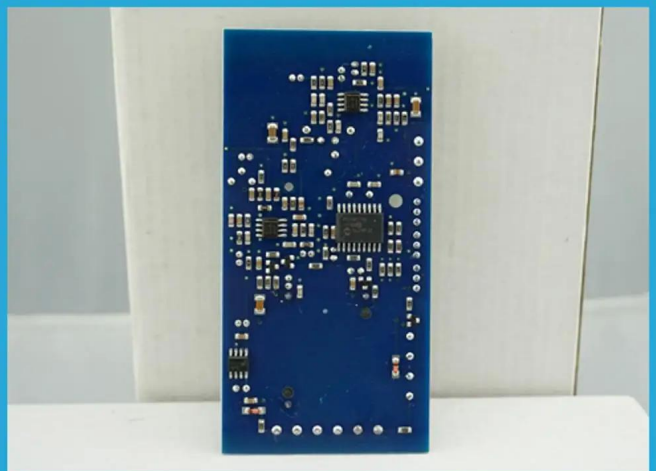
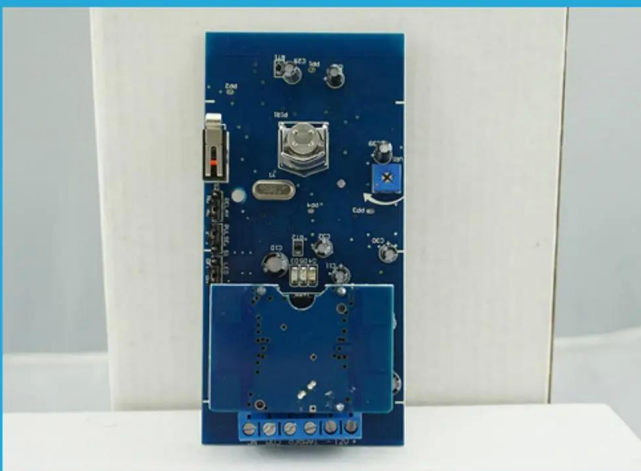
2. DC 9~16V power supply

3. PIR+Microwave dual detecting device

4. 12m detecting distance

5. 2 years warranty , welcome OEM

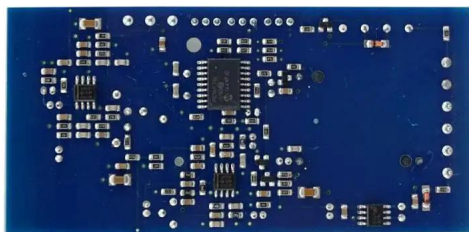
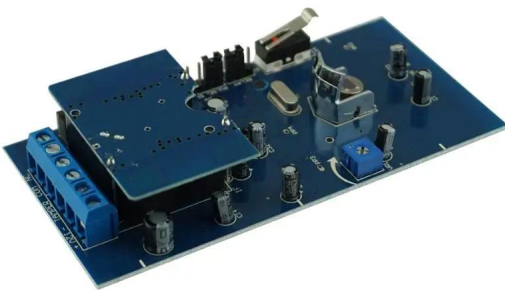
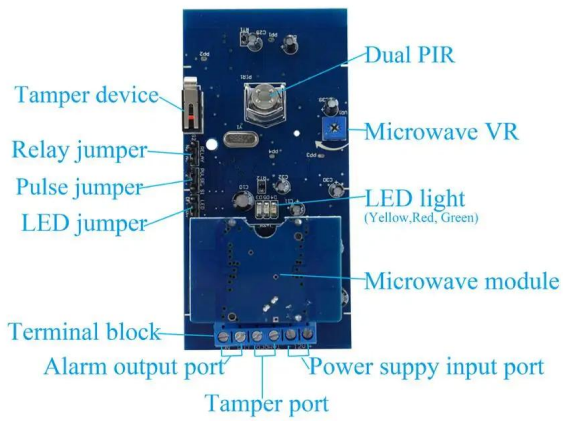
## IN-KIND SHOOTING



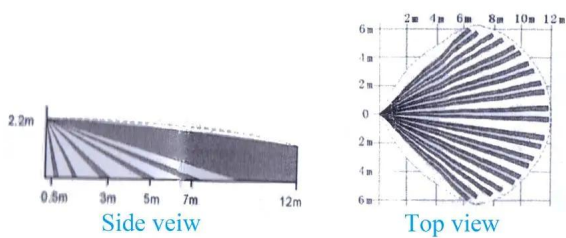
## STANDARD PACKING



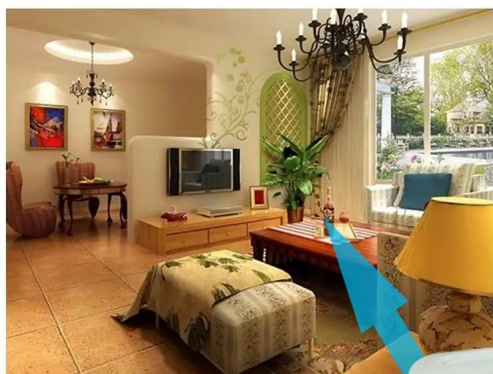
## HOW TO USE IT



Detection zone:







**This model wired motion detector product is widely use in all kinds of burglar alarm system, Such as Villa ,Home ,Factory, Warehouse, Office, Bank etc.**

## RELATED ITEMS

**SMQT**® 深圳市铭汗科技有限公司  
SHENZHEN MINGQIAN TECHNOLOGY CO.,LTD



<https://eis.en.alibaba.com>

**SMQT**® 深圳市铭汗科技有限公司  
SHENZHEN MINGQIAN TECHNOLOGY CO.,LTD



<https://eis.en.alibaba.com>

**SMQT**® 深圳市铭汗科技有限公司  
SHENZHEN MINGQIAN TECHNOLOGY CO.,LTD



<https://eis.en.alibaba.com>

**SMQT**® 深圳市铭汗科技有限公司  
SHENZHEN MINGQIAN TECHNOLOGY CO.,LTD



<https://eis.en.alibaba.com>

**SMQT**® 深圳市铭汗科技有限公司  
SHENZHEN MINGQIAN TECHNOLOGY CO.,LTD



<https://eis.en.alibaba.com>

**SMQT**® 深圳市铭汗科技有限公司  
SHENZHEN MINGQIAN TECHNOLOGY CO.,LTD



<https://eis.en.alibaba.com>

**SMQT**® 深圳市铭汗科技有限公司  
SHENZHEN MINGQIAN TECHNOLOGY CO.,LTD



<https://eis.en.alibaba.com>

**SMQT**® 深圳市铭汗科技有限公司  
SHENZHEN MINGQIAN TECHNOLOGY CO.,LTD



<https://eis.en.alibaba.com>

**SMQT**® 深圳市铭汗科技有限公司  
SHENZHEN MINGQIAN TECHNOLOGY CO.,LTD



<https://eis.en.alibaba.com>

## PACKING & SHIPPING





## OFFICE SHOW



## CUSTOMER



## EXHIBITION

2011 Brazil Fair



2012 shen yang Fair



2013 Jinan Fair



2013 Shenzhen Fair



2012 shen yang Fair



2013 shen yang Fair



2013 Shenzhen Fair



2015 Shenzhen Fair

## CERTIFICATION



## FAQ

### Q: Can I have a sample order?

A: Yes, we are willing to offer trial sample order to you for quality test. Mixed samples are acceptable.

### Q: What is the lead time?

A: Sample needs 1-3 working days, mass production time needs 10-15 working days for order less than 5000pcs.

### Q: Do you have any MOQ limit?

A: EXW MOQ is 100pcs under blank box.

### Q: How do you ship the goods and how long does it take arrive?

A: The sample will be sent to you by optional shipping service (couriers, air, and sea). The delivery time depends on the shipping service.

### Q: How will we proceed the order if I have logo to print?

A: Firstly, we will prepare artwork for visual confirmation. If the color and position are right, we would make sampling firstly from silk print factory and take picture for your second confirmation before mass production.