

SMQT Four CH wireless 433mhz/315mhz remote controller with transmitter

Product Introduction



Specification		
Product name	SMQT Four CH wireless 433mhz/315mhz remote controller with transmitter	
Model	EA-11-4-12	EA-11-4-24
Size	Receiver:74*53*27(mm) Sender:53*23*10(mm)	Receiver:74*53*27(mm) Sender:53*23*10(mm)
Working voltage	12V DC	24V DC
Working Current	<6MA	<6MA
Power consumption	10mW	10mW
Max connect remote controller	1 Receiver max match 30 pcs transmitters	1 Receiver max match 30 pcs transmitters
Wireless frequency	315Mhz/433Mhz(optional)	315Mhz/433Mhz(optional)
Communication distance	100m in open air	100m in open air
Working temperature	-20°C~50°C	-20°C~50°C

Storage temperature	-25°C~65°C	-25°C~65°C
Operating humidity	95%	95%
Color	White	White
Weight	98g	98g

Product Feature

What's the features of our Four CH wireless 433mhz/315mhz remote controller ?



Four CH wireless remote controller

Wireless frequency 315Mhz/433Mhz

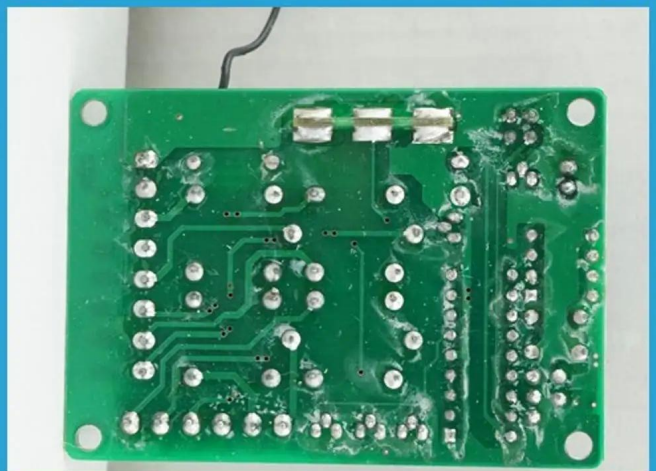
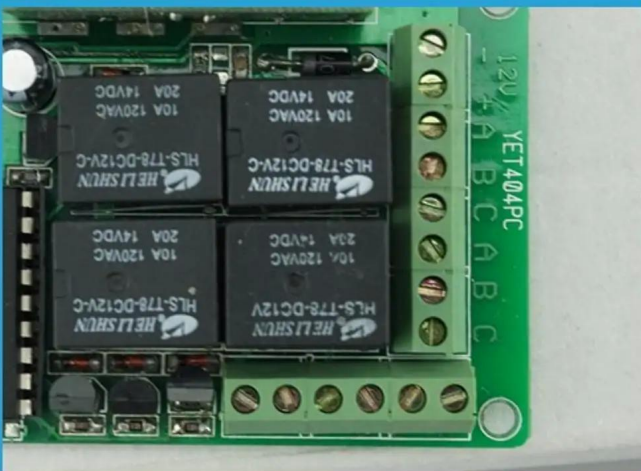
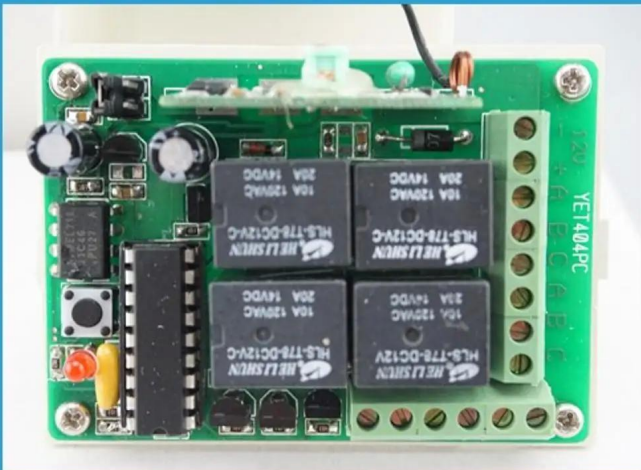
2 years quality warranty,welcome OEM

1 Receiver max match 30 pcs transmitters

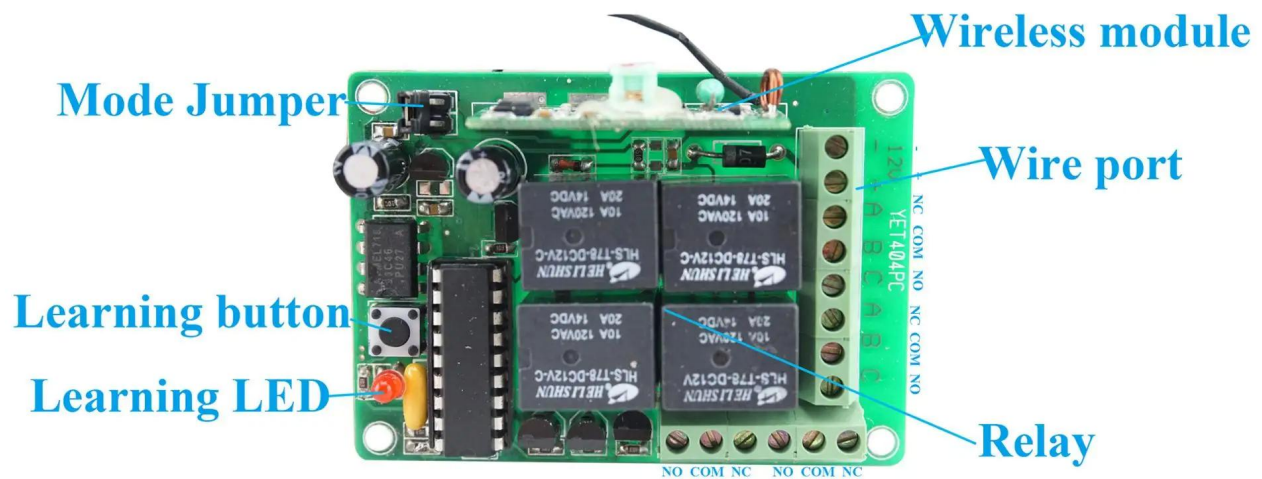
Communication distance 100m in open air

Product Display

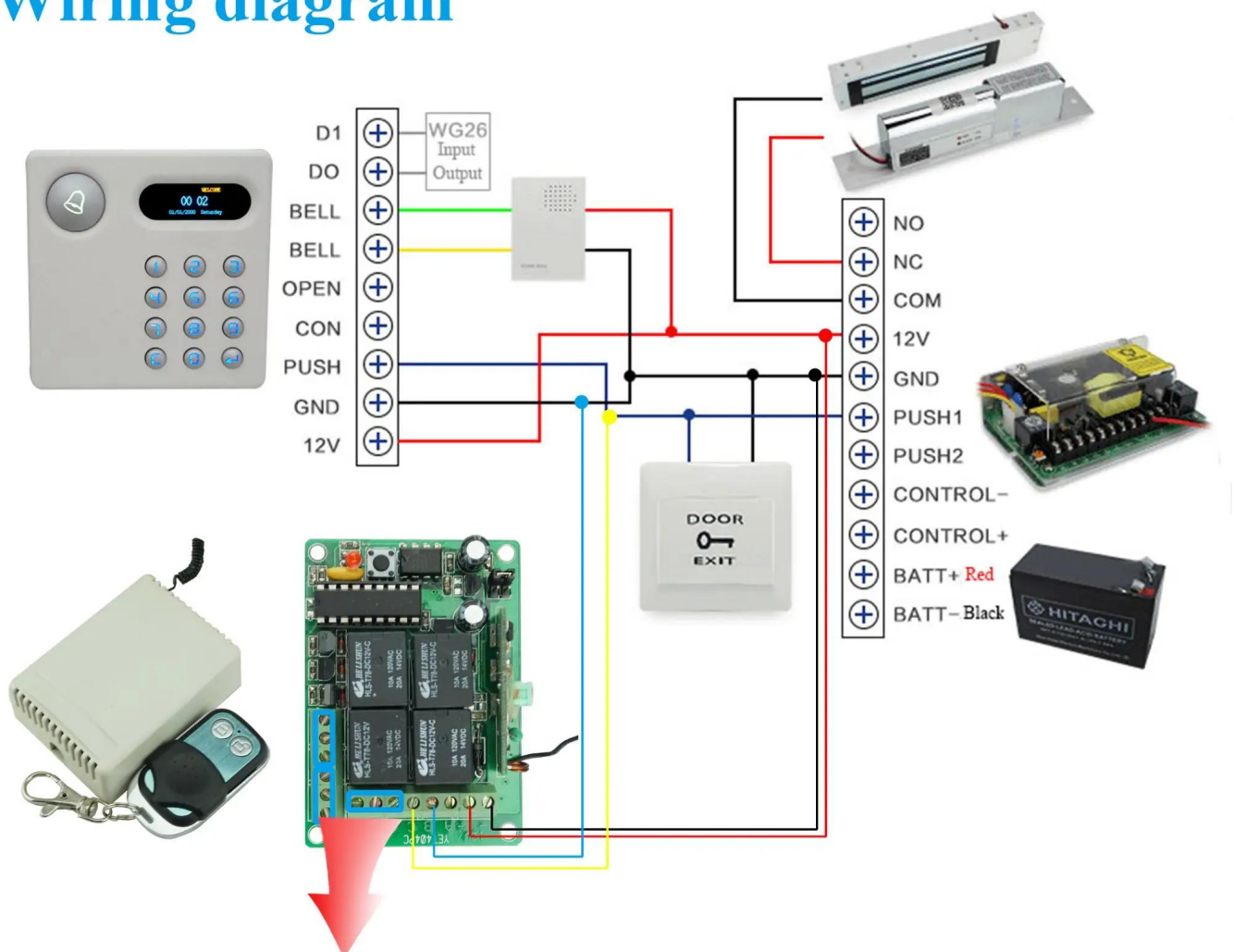
IN-KIND SHOOTING



APPLICATION



Wiring diagram



These port is use for other doors

This model 4 channel remote controller is widely use in Access control system, to remote open the door, suitble for Home, Apartment,Office etc.

Company Information

OFFICE SHOW



CUSTOMERS



EXHIBITION



CERTIFICATION



Our Services

HOW TO COOPERATE

Payment & Transport



FAQ

FAQ

Q:Can I have a sample order?

A:Yes, we are willing to offer trial sample order to you for quality test. Mixed samples are acceptable.

Q:What is the lead time?

A:Sample needs 1-3 working days, mass production time needs 10-15 working days.

Q:What is your MOQ?

A:No MOQ limit.The more quantity the more discounts.

Q:How do you ship the goods and how long does it take arrive?

A:The sample will be sent to you by optional shipping service (couriers, air, and sea),or appointed by buyer,7-15 days.

Q:How will we proceed the order if I have logo to print?

A:Firstly, we will prepare artwork for visual confirmation. If the color and position are right, we would make sampling firstly from silk print factory and take picture for your second confirmation before mass production.

***How to contact us?
Click the enter send us inquiry below.***