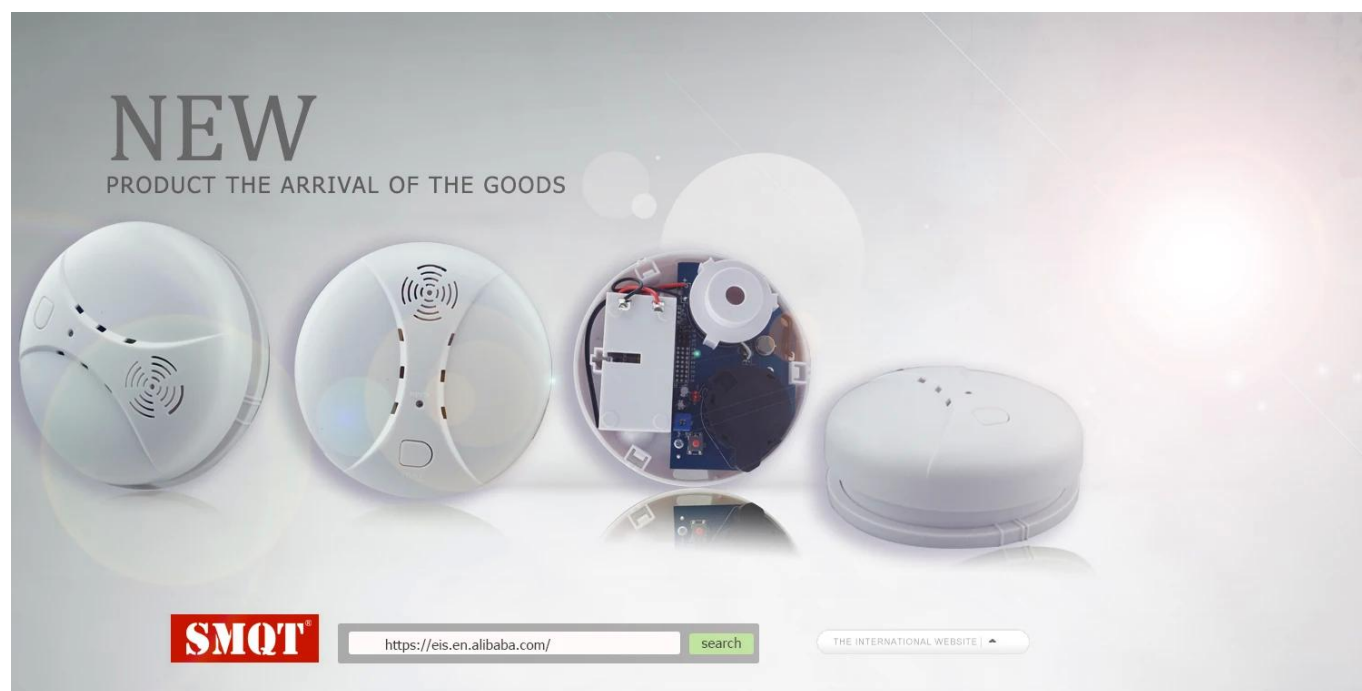


# SMQT New Wireless 433MHz/Standalone photoelectric smoke detector with 9V battery for home alarm system



Parameter	
Product name:	SMQT New Wireless 433MHz/Standalone photoelectric smoke detector with 9V battery for home alarm system
Model:	EB-117w-1
box case dimension:	Ø113*45(mm)
Power supply:	9V carbon-zinc/alkaline battery
Static current:	≤10uA
Alarm current:	≤35mA
Buzzer volume:	80dB
Wireless frequency:	433MHz(1527 chip code)/315MHz(2262 chip code)
Wireless emission distance:	≤100m(open air)
Smoke detecting sensitivity:	II Grade
Working temperature:	-10°C~+55°C
Working humidity:	<80%
Battery life time:	<1 year
Feature:	Wireless working or standalone working both ok
Color:	White
Weight:	0.21kg

## WHAT FEATURE OF THE EB-117W-1?



1. Wireless & standalone smoke detector

2. 9V Alkaline battery power supply

3. Battery life time > 1 years

4. 315Mhz(1527)/433Mhz(2262) wireless frequency (optional)

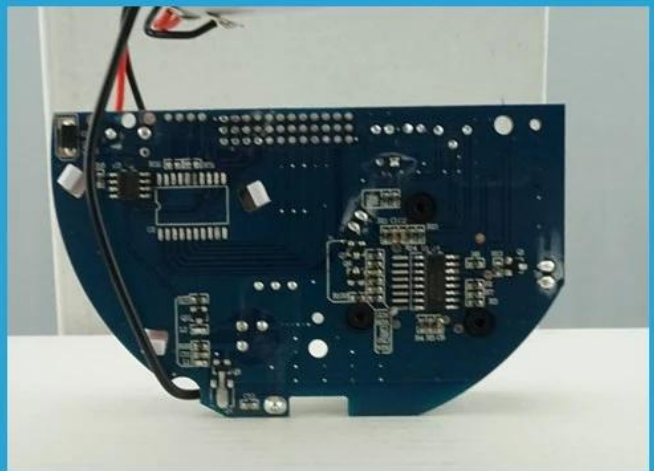
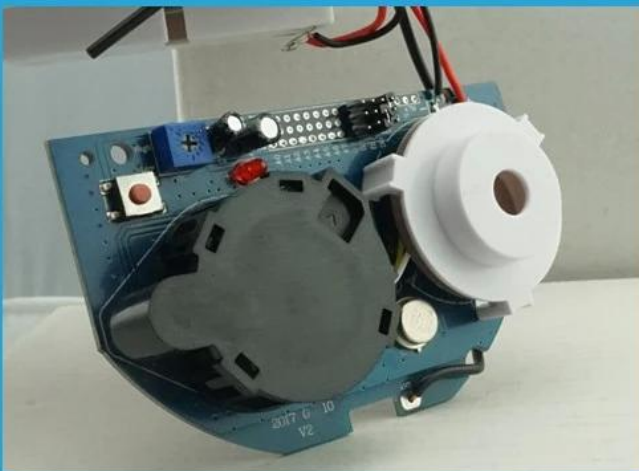
5. Wireless emission distance 100m(in the open air)

6. 75dB alarm sound

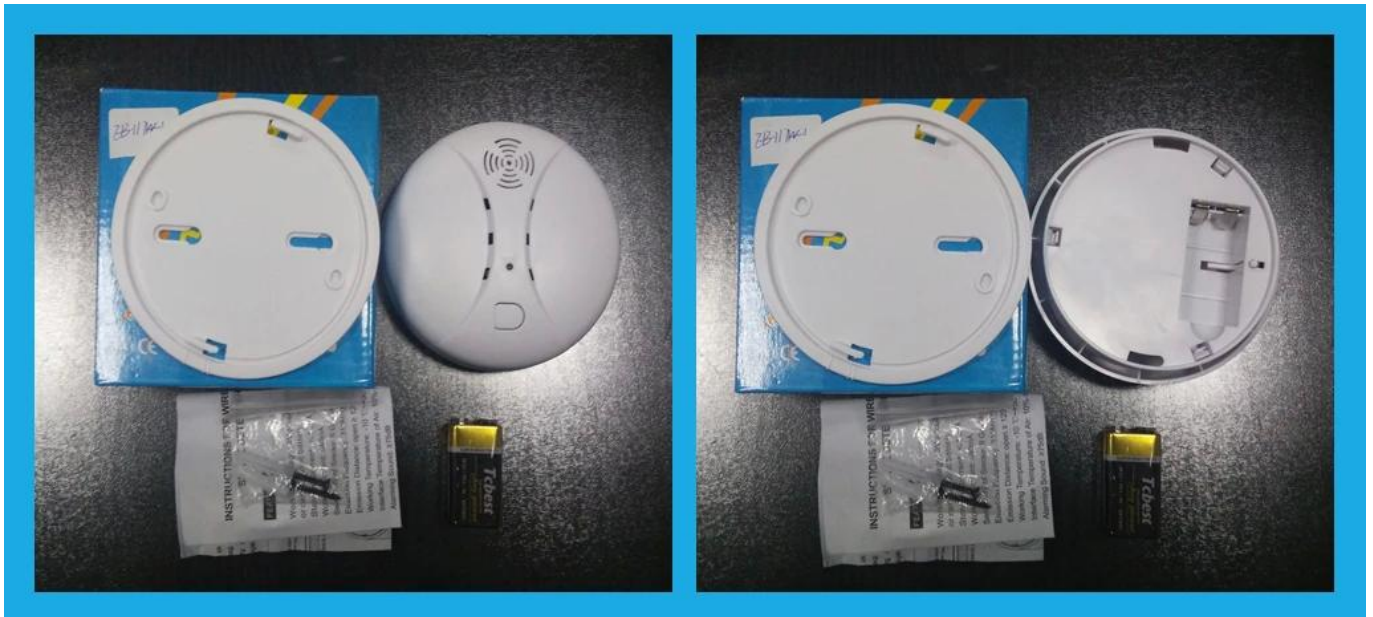
7. II grade sensitivity of smoke

8. 2 years warranty , welcome OEM

**WHAT IS THE EB-117W-1 LOOK LIKE?**



## HOW ABOUT THE EB-117W-1'S STANDARD PACKAGE?



## HOW TO USE IT?

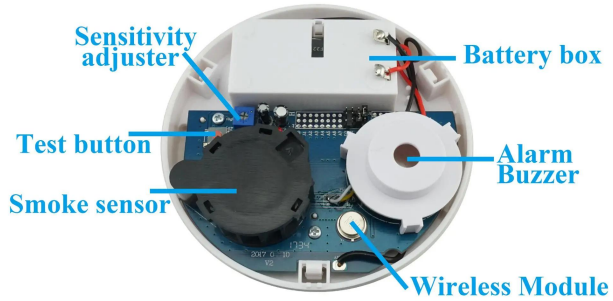












9V carbon-zinc/  
alkaline battery  
power supply



RF:433MHz  
1527 chip code  
330k

Match alarm host to use or working standalone



Suitable for Kitchen, Warehouse, Meeting room etc.

**EB-117W-1 wireless smoke detector is widely use in home fire alarm, Can prevent fire effectively, keep your home safe.**

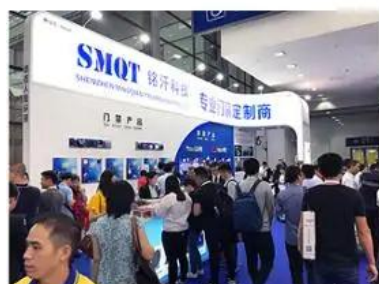
## HOW ABOUT OTHER CHOICE?



## HOW ABOUT OUR COMPANY?



## CUSTOMER



## EXHIBITION

2011 Brazil Fair



2012 shen yang Fair



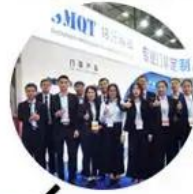
2013 Jinan Fair



2013 Shenzhen Fair



2017 Shenzhen Fair



2012 shen yang Fair



2013 shen yang Fair



2013 Shenzhen Fair



2015 Shenzhen Fair





# CERTIFICATE



## HOW TO COOPERATION?



<b>Trade terms:</b>	<b>EXW</b>
<b>Payment terms:</b>	<b>T/T, Western union, Paypal etc</b>
<b>Delivery time:</b>	<b>Normal order within 7 days, bulk order 10-15days</b>
<b>Packing:</b>	<b>Neutral paper box and paper carton</b>
<b>Shipping:</b>	<b>Express company or by sea, by air or appointed by buyer</b>

## FAQ

Q:Can I have a sample order?

A:Yes, we are willing to offer trial sample order to you for quality test. Mixed samples are acceptable.

Q:What is the lead time?

A:Sample needs 1-3 working days, mass production time needs 10-15 working days.

Q:What is your MOQ?

A:No MOQ limit, the more quantity the more discounts.

Q:How do you ship the goods and how long does it take arrive?

A:The sample will be sent to you by optional shipping service (couriers, air, and sea),or appointed by buyer,7-15 days.

Q:How will we proceed the order if I have logo to print?

A:Firstly, we will prepare artwork for visual confirmation. If the color and position are right, we would make sampling firstly from silk print factory and take picture for your second confirmation before mass production.