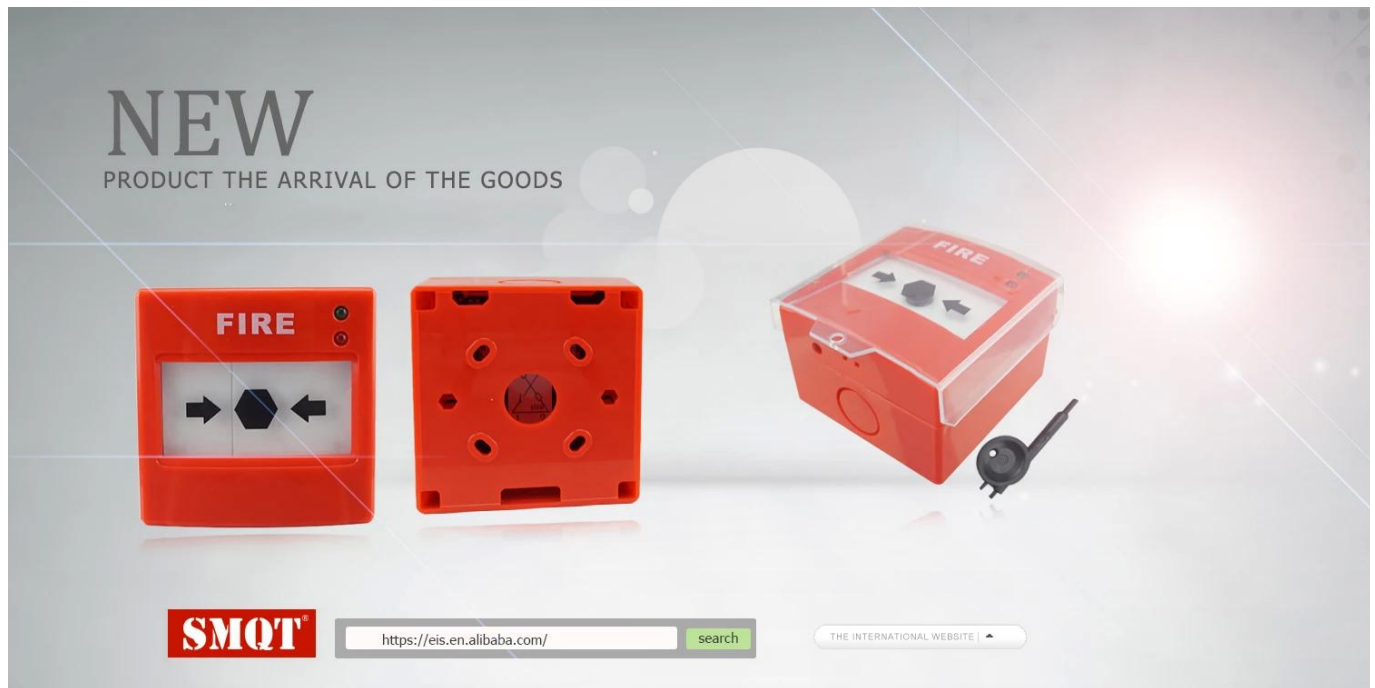


SMQT fire alarm resettable manual call point emergency button without glass



Specification	
Product name:	SMQT fire alarm resettable manual call point emergency button without glass
Model:	EB-114
Size:	86*86*60(mm)
Working voltage:	12V DC
Stand by current:	≤330uA(DC 12V)
Alarm current :	≤17.5mA(DC 12V)
Output contact :	NC/NO
Red LED indicator:	Alarm Indicator
Green LED indicator:	Power Indicator
Color:	Red
Working temperature :	-20°C~50°C
Storage temperature :	-25°C~65°C
Weight :	160g

What features of fire alarm resettable manual call point emergency button without glass EB-114?



1.Reset Conventional fire alarm emergency manual call point

2.Power supply 12V DC

3.Standby current 330uA, Alarm current 17.5mA(DC 12V)

4.Indicator light: Green:power, Red: Alarming

5.Suitable for fire alarm system

6.Feature:key set

7.2 years warranty , welcome OEM

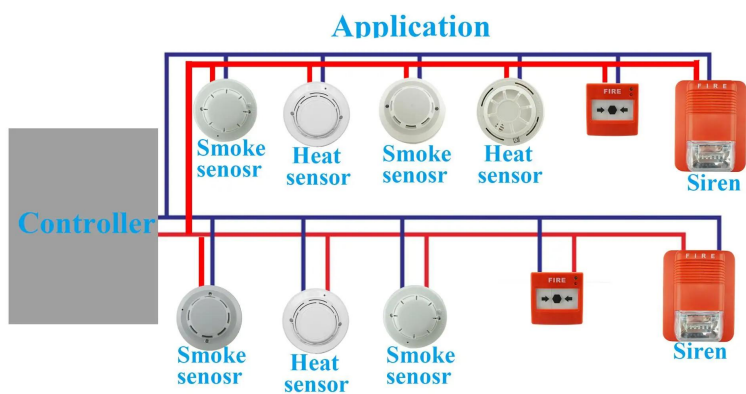
WHAT IS THE EB-114 LOOK LIKE?



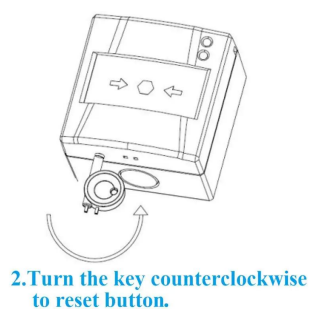
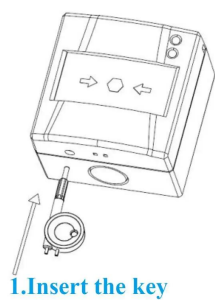
HOW ABOUT THE EB-114'S STANDARD PACKAGE?



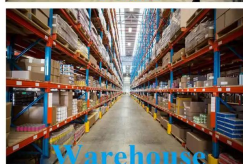
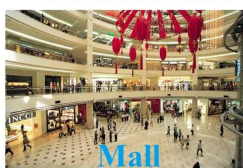
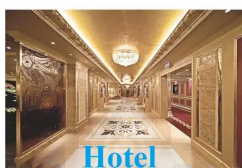
HOW TO USE EB-114?



How to reset the button?



Where to use?



HOW ABOUT OTHER CHOICE?

SMQT[®]
铭汗科技



SMQT[®]
铭汗科技



SMQT[®]
铭汗科技



SMQT[®]
铭汗科技



SMQT[®]
铭汗科技



SMQT[®]
铭汗科技



SMQT[®]
铭汗科技



SMQT[®]
铭汗科技



SMQT[®]
铭汗科技



HOW ABOUT OUR COMPANY?



CUSTOMER



EXHIBITION

2011 Brazil Fair



2012 shen yang Fair



2013 Jinan Fair



2013 Shenzhen Fair



2012 shen yang Fair



2013 shen yang Fair



2013 Shenzhen Fair



2015 Shenzhen Fair



CERTIFICATE



HOW TO COOPERATION?



PACKAGING & SHIPPING

Detection+Packing+Sealing+Finishing+International Express



Inquiry



Contract



Testing and packing



Receiving



Reply

Receive payment&Product

Delivery



FAQ

Q:Can I have a sample order?

A:Yes, we are willing to offer trial sample order to you for quality test. Mixed

samples are acceptable.

Q:What is the lead time?

A:Sample needs 1-3 working days, mass production time needs 10-15 working days.

Q:What is your MOQ?

A:No MOQ limit, the more quantity the more discounts.

Q:How do you ship the goods and how long does it take arrive?

A:The sample will be sent to you by optional shipping service (couriers, air, and sea),or appointed by buyer,7-15 days.

Q:How will we proceed the order if I have logo to print?

A:Firstly, we will prepare artwork for visual confirmation. If the color and position are right, we would make sampling firstly from silk print factory and take picture for your second confirmation before mass production.