



|                       |   |
|-----------------------|---|
| Product Name          | Special design WG26/34 IC card reader outdoor |
| Model Number:         | EA-62   |
| Working Voltage:      | 12VDC   |
| Working current:      | <100mA  |
| Communcion distance:  | >80m  |
| Reading distance:     | 5-15cm  |
| Communication format: | WG26/34                                       |
| Card type:            | IC(13.56MHz)                                  |
| Working temperature:  | -20°C ~60°C                                   |
| Dimension:            | 115mm*75mm*18mm                               |

**What Features of our new card reader?**



**Communication distance: > 80m**

**Communication format: WG26/34**

**Card type: IC(13.56MHz)**

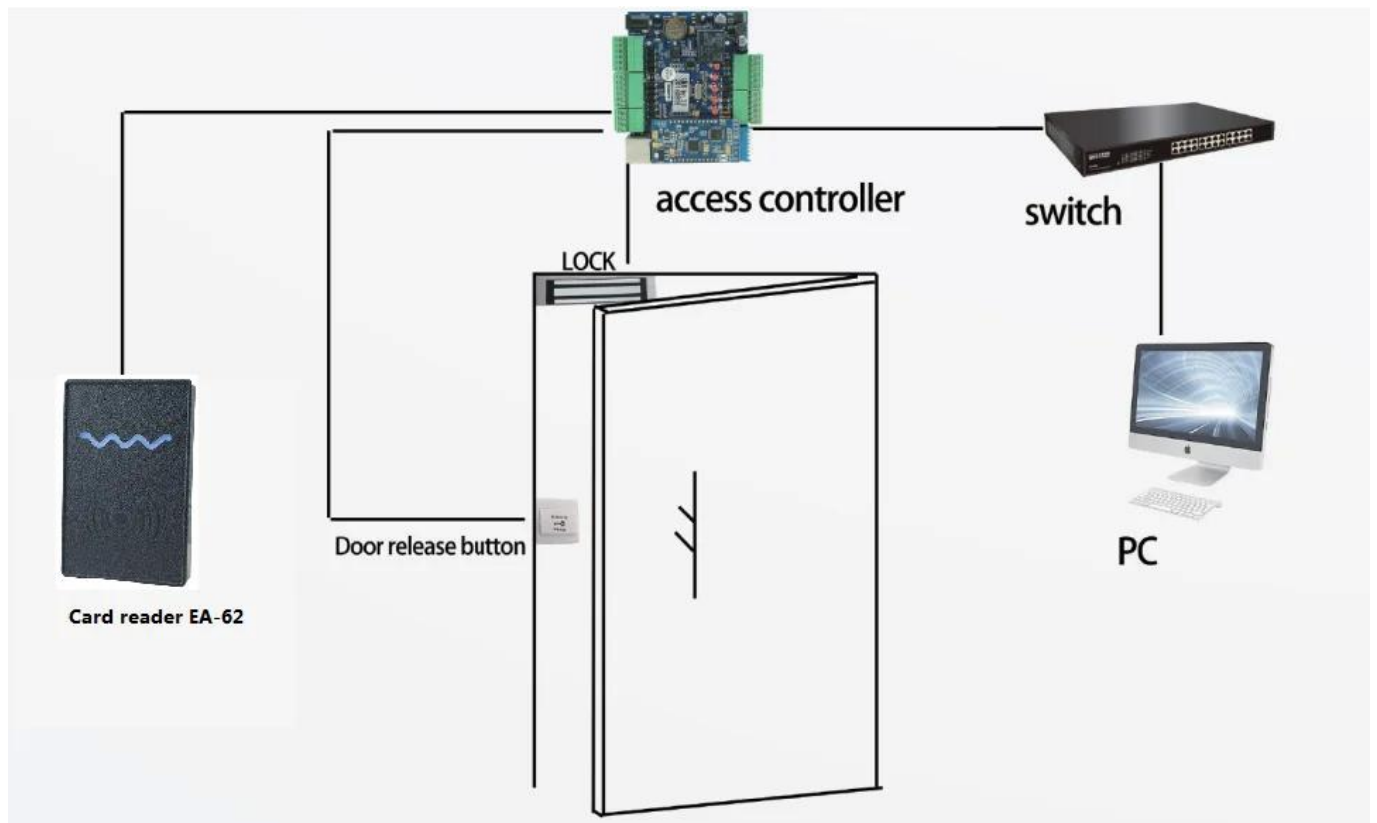
**Working temperature: -20°C ~ 60°C**

**Reading distance: 5-15cm**

## IN-KIND SHOOTING



## APPLICATION







HOME



OFFICE



FACTORY



Department



HOTEL



SCHOOL

## SHOW CASE

**SMQT**  
铭汗科技



**SMQT**  
铭汗科技



**SMQT**  
铭汗科技



**SMQT**  
铭汗科技



**SMQT**  
铭汗科技



**SMQT**  
铭汗科技



**SMQT**  
铭汗科技



**SMQT**  
铭汗科技



**SMQT**  
铭汗科技



**OFFICE SHOW**





## CUSTOMER



## EXHIBITION



## CERTIFICATE



## HOW TO COOPERATION





|                       |  |
|-----------------------|--|
| <b>Trade terms:</b>   | <b>EXW</b>   |
| <b>Payment terms:</b> | <b>T/T, Western union, Paypal etc</b>                          |
| <b>Delivery time:</b> | <b>Normal order within 7 days, bulk order 10-15days</b>        |
| <b>Packing:</b>       | <b>Neutral paper box and paper carton</b>                      |
| <b>Shipping:</b>      | <b>Express company or by sea, by air or appointed by buyer</b> |

## FAQ

### Q:Can I have a sample order?

A:Yes, we are willing to offer trial sample order to you for quality test. Mixed samples are acceptable.

### Q: What is the lead time?

A:Sample needs 1-3 working days, mass production time needs 10-15 working days for order less than 5000pcs.

### Q: Do you have any MOQ limit?

A:EXW MOQ is 100pcs under blank box.

**Q: How do you ship the goods and how long does it take arrive?**

**A:**The sample will be sent to you by optional shipping service (couriers, air, and sea). The delivery time depends on the shipping service.

**Q:How will we proceed the order if I have logo to print?**

**A:**Firstly, we will prepare artwork for visual confirmation. If the color and position are right, we would make sampling firstly from silk print factory and take picture for your second confirmation before mass production.

**Q: Does alarm panel work with any sensor?**

**A:**The alarm panel can work with all dry contact wired detectors and wireless detector, including almost all of the wireless sensors from Chinese manufacturers. The wireless encode and decode is EV1527 or our wireless sensors.