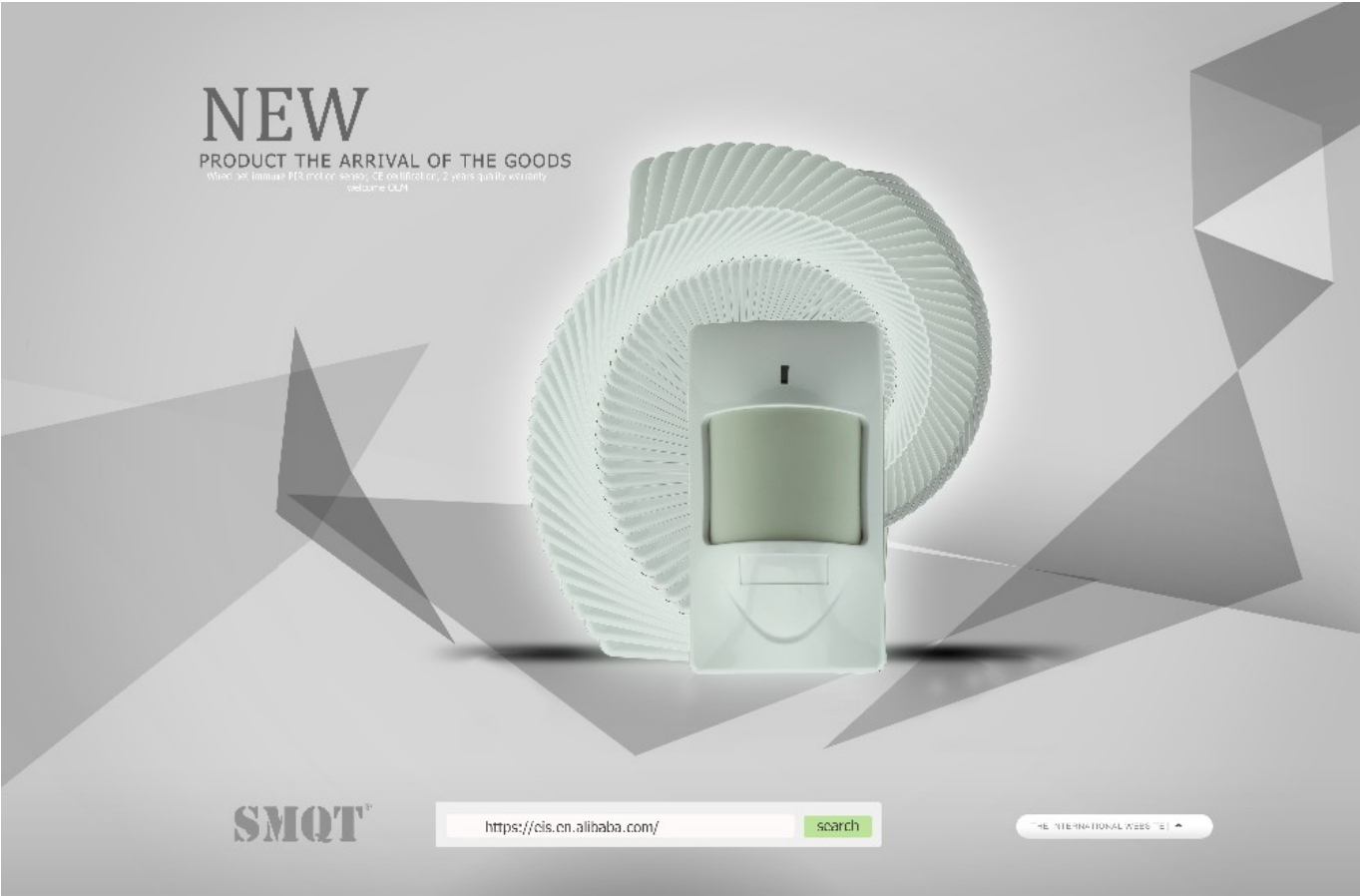


# Stable PIR Anti-pet Sensor,pet sensor,dual detector

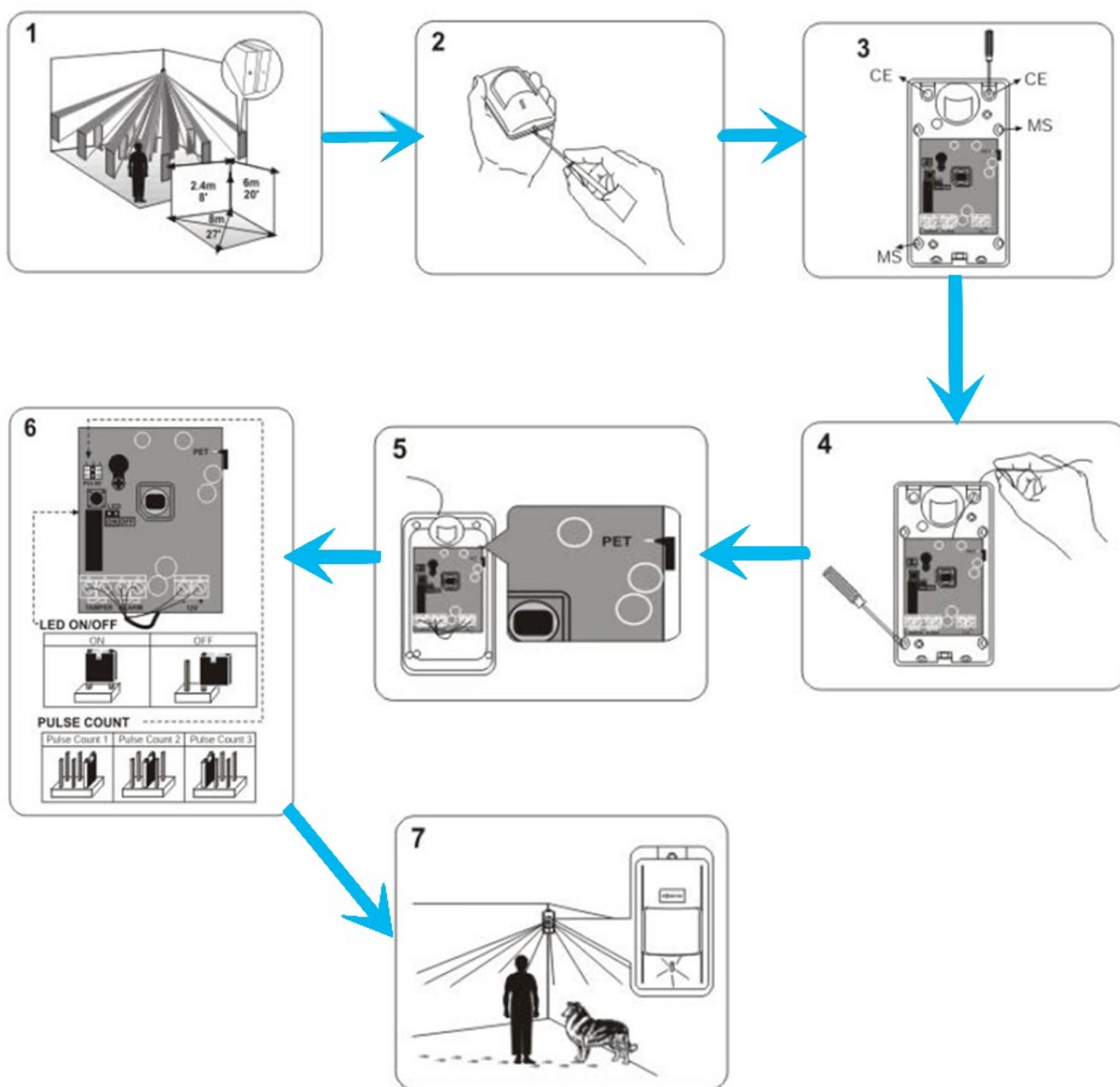


Specification	
Product name	Stable PIR Anti-pet Sensor,pet sensor,dual detector
Model	EB-182
Dimension	107×59×40(mm)
Operationg voltage	9-16V DC
Comsumption current	12mA 12 DC
Detecting distance	12m
Detecting angle	110 °
Alarm output	NO/NC
Installation mode	Wall-mounted
Installation height	2.2m
Material	Fireproof ABS housing
LED	ON/OFF(optional)
Working temperature	-10 °C~50 °C

Shell color	White
Net weight	0.1kg

## Product Features

### What Features of our dual-pir sensor?

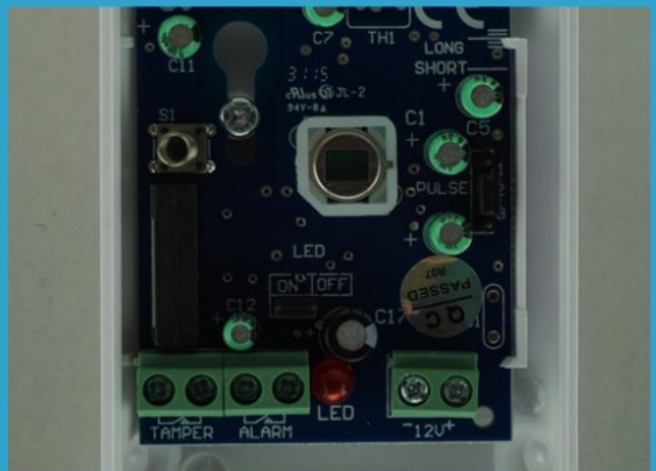


- 1.High stability, adopted advanced technology in signal processing and provide superhigh detection ability and anti error alarm.
- 2.The EB-182 with custom lens and advanced electronics has been specially desitned to give full pet immunity-up to 70lb(33kg) dog, 4 carts or multiple rodents and high catch performance for residential installations.
3. suitable for the safety of residential house,villa, factories, markets,warahouses, office building etc.

#### **Product Picture**

---

### **IN-KIND SHOOTING**



## Company Information

### OFFICE SHOW



### CUSTOMER





## EXHIBITION



## CERTIFICATE



## HOW TO COOPERATION



<b>Trade terms:</b>	<b>EXW</b>
<b>Payment terms:</b>	<b>T/T, Western union, Paypal etc</b>
<b>Delivery time:</b>	<b>Normal order within 7 days, bulk order 10-15days</b>
<b>Packing:</b>	<b>Neutral paper box and paper carton</b>
<b>Shipping:</b>	<b>Express company or by sea, by air or appointed by buyer</b>

## FAQ

## FAQ

### Q:Can I have a sample order?

A:Yes, we are willing to offer trial sample order to you for quality test. Mixed samples are acceptable.

### Q: What is the lead time?

A:Sample needs 1-3 working days, mass production time needs 10-15 working days for order less than 5000pcs.

### Q: Do you have any MOQ limit?

A:EXW MOQ is 100pcs under blank box.

**Q: How do you ship the goods and how long does it take arrive?**

**A:**The sample will be sent to you by optional shipping service (couriers, air, and sea). The delivery time depends on the shipping service.

**Q:How will we proceed the order if I have logo to print?**

**A:**Firstly, we will prepare artwork for visual confirmation. If the color and position are right, we would make sampling firstly from silk print factory and take picture for your second confirmation before mass production.

**Q: Does alarm panel work with any sensor?**

**A:**The alarm panel can work with all dry contact wired detectors and wireless detector, including almost all of the wireless sensors from Chinese manufacturers. The wireless encode and decode is EV1527 or our wireless sensors.