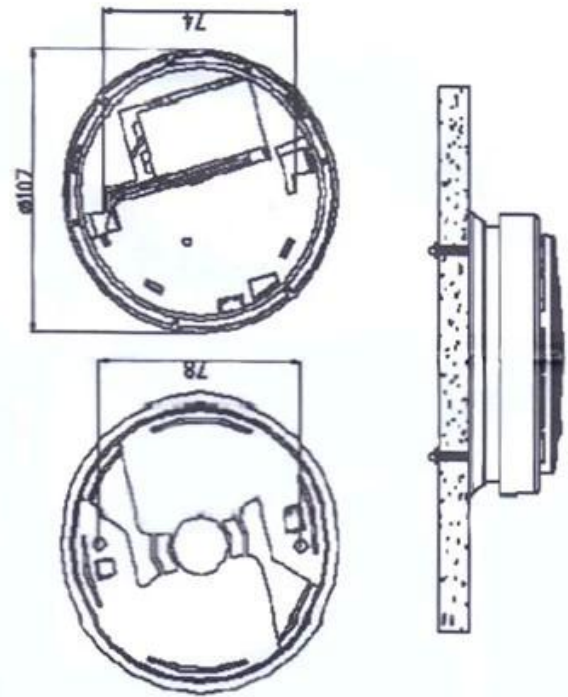
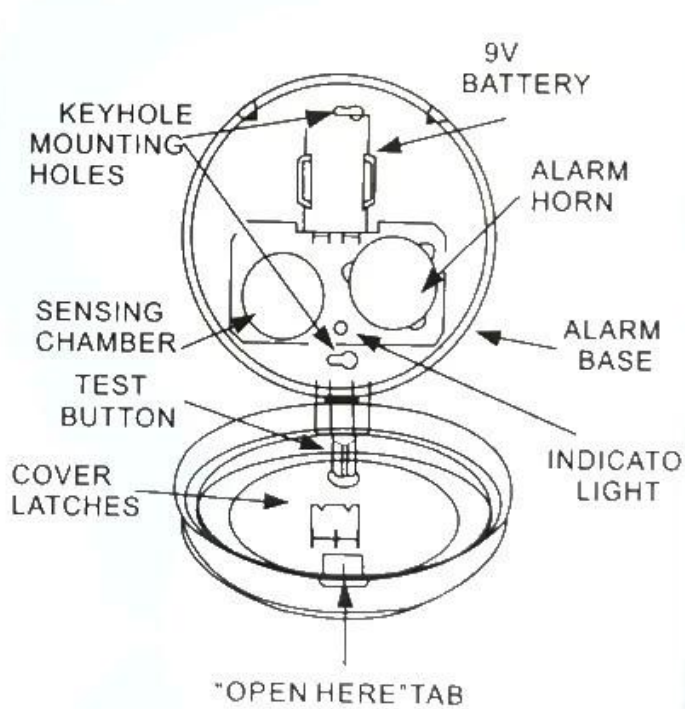




## Specification

<b>Product name:</b>	<b>Standalone wireless smoke detector</b>
<b>Size:</b>	<b>Ø5.5"dia.,1.6"ht.</b>
<b>Static Current:</b>	<b>Less than 12μA</b>
<b>Alarm Current:</b>	<b>Less than 15mA</b>
<b>Operating Voltage:</b>	<b>DC 9V</b>
<b>Audio Alarm:</b>	<b>85dB at 10 feet</b>
<b>Battery:</b>	<b>9V battery back-up for at least 1 year</b>
<b>Protection area:</b>	<b>6m high,60 m<sup>2</sup></b>
<b>Test button:</b>	<b>Electronically simulates Smoke condition,causing the Unit to alarm.</b>
<b>Alarm Reset:</b>	<b>Automatic when Smoke clears</b>
<b>Indicator LEDs:</b>	<b>Intermittent RED LED</b>
<b>DC Power:</b>	<b>Audio alarm and rapidly</b>
<b>Local Alarm:</b>	<b>Flashing Red LED</b>

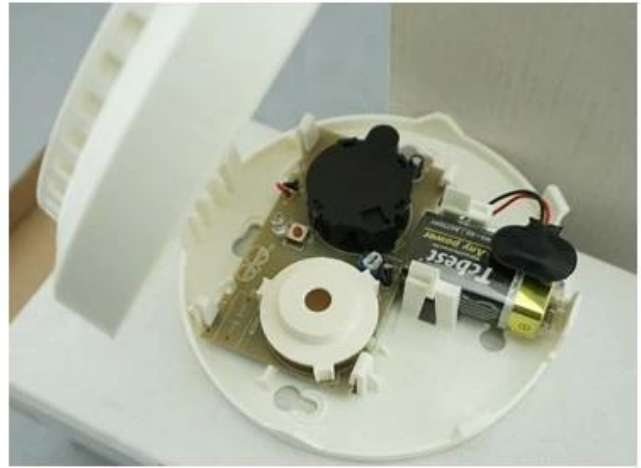
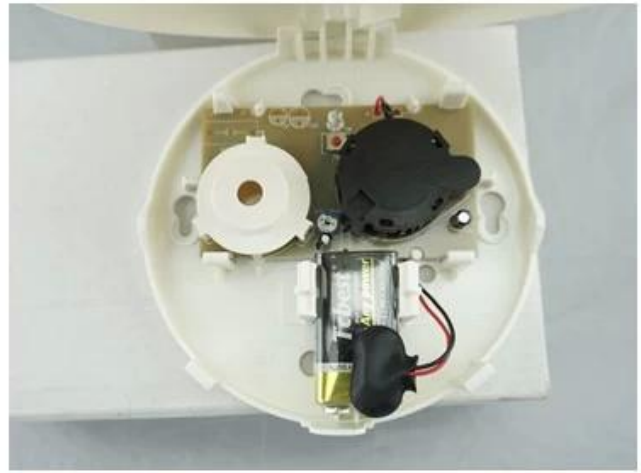
## What Features of our smoke detector?



Suitable for home, office, factory, hotel, school, bank..etc.



## **IN-KIND SHOOTING**



**SHOW CASE**



**OFFICE SHOW**



## CUSTOMER



## EXHIBITION



## CERTIFICATE



## HOW TO COOPERATION



<b>Trade terms:</b>	<b>EXW</b>
<b>Payment terms:</b>	<b>T/T, Western union, Paypal etc</b>
<b>Delivery time:</b>	<b>Normal order within 7 days, bulk order 10-15days</b>
<b>Packing:</b>	<b>Neutral paper box and paper carton</b>
<b>Shipping:</b>	<b>Express company or by sea, by air or appointed by buyer</b>