

Wired magnetic contact sensor

Fireproof ABS material shell

NO/NC model optional

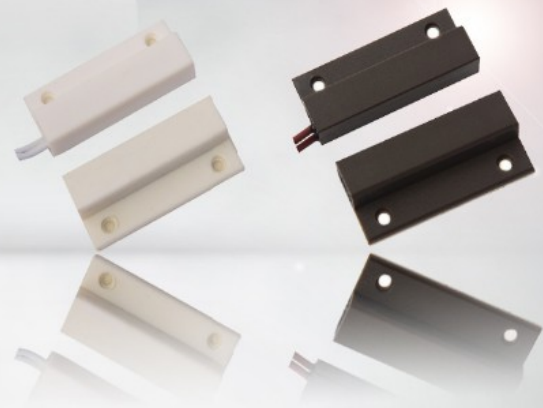
Brown/white color optional

20±5(mm) gap distance

Suitable wooden door or window

14g weight

SMQT®



Product name	Wired door magnetic contact white switch
Model	EB-132
Dimension	34×41×6(mm)
Code mode	NO/NC(optional)
Gap	20±5(mm)
Max voltage	≤100V DC
Max current	≤500mA
Max rating	≤10W
Color	Brown/White(optional)
Suit for	wooden door or window
Material	Fireproof ABS housing
Working temperature	-10 °C~50 °C
Net weight	14g

What Features of our Door sensor?

WHY CHOOSE US ?



1.7 Years golden supplier in Alibaba platform.

2.Our product follow CE standard.

3.Provide 2 years quality warranty.

4.Welcome OEM and ODM.

IN-KIND SHOOTING



APPLICATION



SHOW CASE



OFFICE SHOW



CUSTOMER



EXHIBITION



CERTIFICATE



HOW TO COOPERATION



Trade terms:	EXW
Payment terms:	T/T, Western union, Paypal etc
Delivery time:	Normal order within 7 days, bulk order 10-15days
Packing:	Neutral paper box and paper carton
Shipping:	Express company or by sea, by air or appointed by buyer

FAQ

Q:Can I have a sample order?

A:Yes, we are willing to offer trial sample order to you for quality test. Mixed samples are acceptable.

Q: What is the lead time?

A:Sample needs 1-3 working days, mass production time needs 10-15 working days for order less than 5000pcs.

Q: Do you have any MOQ limit?

A:EXW MOQ is 100pcs under blank box.

Q: How do you ship the goods and how long does it take arrive?

A:The sample will be sent to you by optional shipping service (couriers, air, and sea). The delivery time depends on the shipping service.

Q:How will we proceed the order if I have logo to print?

A:Firstly, we will prepare artwork for visual confirmation. If the color and position are right, we would make sampling firstly from silk print factory and take picture for your second confirmation before mass production.

Q: Does alarm panel work with any sensor?

A:The alarm panel can work with all dry contact wired detectors and wireless detector, including almost all of the wireless sensors from Chinese manufacturers. The wireless encode and decode is EV1527 or our wireless sensors.