

# Waterproof RFID 13.56MHz Single Door Access Control System

## Product Introduction



<b>Name</b>	<b>Wireless 433mhz/315mhz doors&amp;windows magnetic sensor</b>
<b>Model</b>	<b>EB-130B</b>
<b>Dimension</b>	<b>65×30×17(mm</b>
<b>Gap</b>	<b>40 ±5mm</b>
<b>Operating voltage</b>	<b>3.7V/200mAh rechargeable Li-ion battery</b>
<b>Charging time</b>	<b>12 hours</b>
<b>Full loaded battery work time</b>	<b>≤1years</b>

<b>Wireless frequency</b>	<b>315Mhz/433Mhz/868Mhz(optional)</b>
<b>Transmitting distance</b>	<b>&lt;=100m(in the open area)</b>
<b>LED indicator</b>	<b>Lower power</b>
<b>Shell color</b>	<b>White</b>
<b>Net weight</b>	<b>0.035kg</b>

#### **Product Feature**

**What features of our Wireless 433mhz/315mhz doors&windows magnetic sensor?**



Fireproof ABS material

DC 12V power supply

Wireless frequency 315MHZ/433MHz/868MHz

Wireless signal transmisson distance max 100m

2 years warranty;welcome OEM&ODM

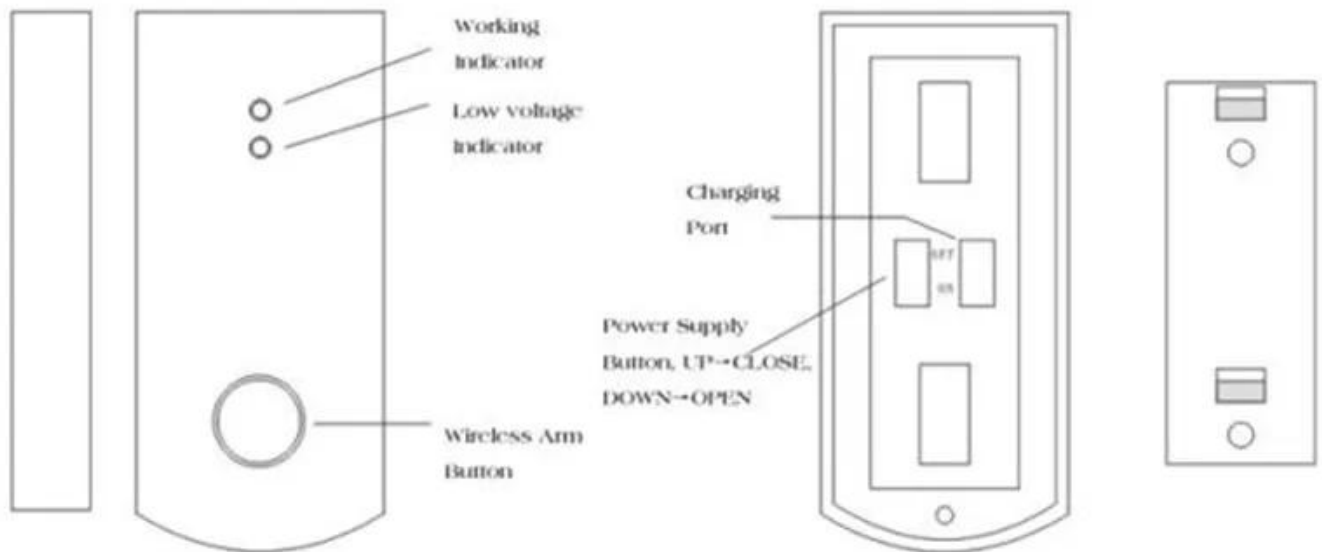
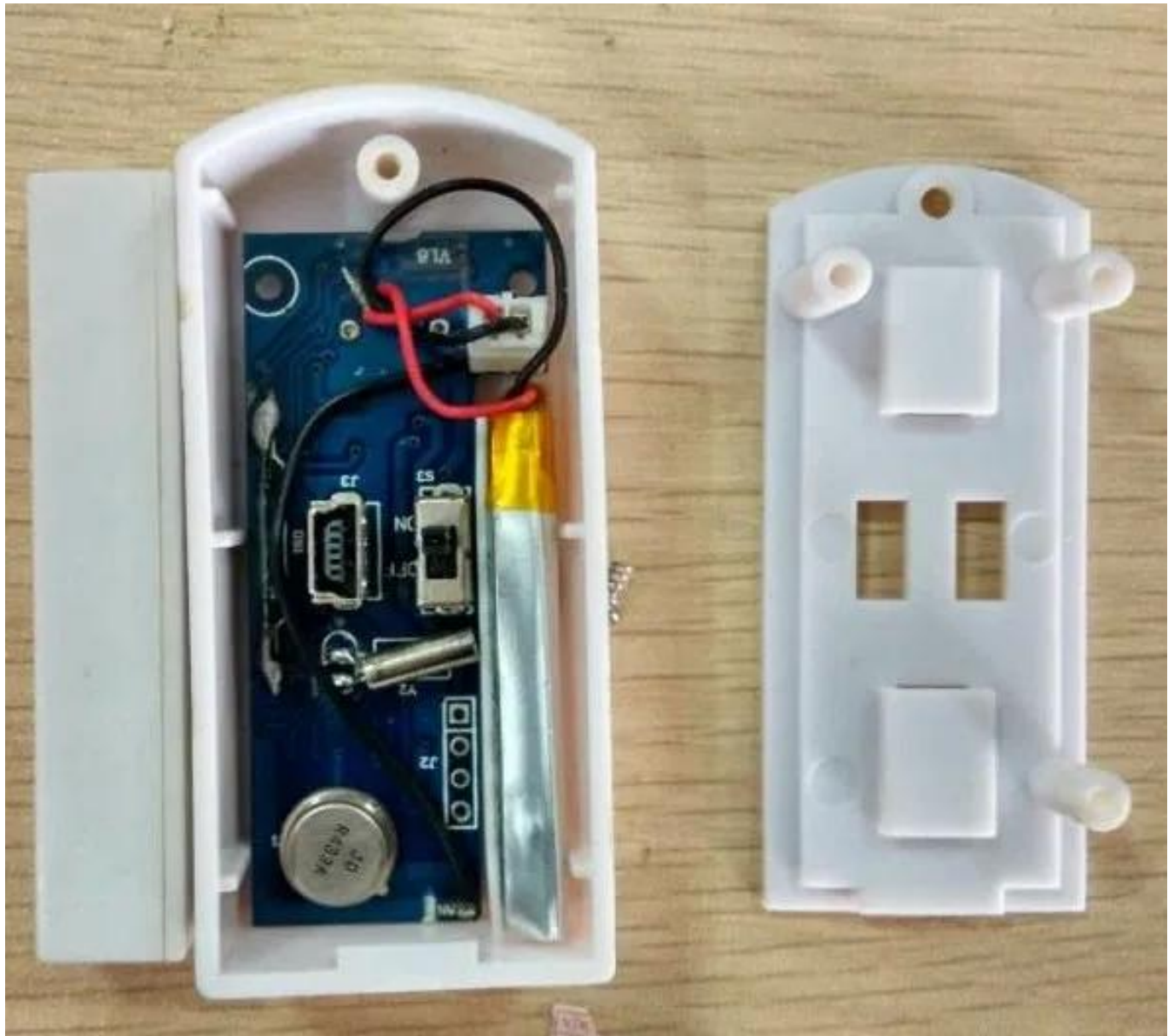
**Product Display**

**IN-KIND SHOOTING**



## Application

## APPLICATION



**Show Cases**

## SHOW CASES



## Company Information

## OFFICE SHOW



## CUSTOMERS



## EXHIBITION

2011 Brazil Fair



2012 shen yang Fair



2013 Jinan Fair



2013 Shenzhen Fair



2012 shen yang Fair



2013 shen yang Fair



2013 Shenzhen Fair



2015 Shenzhen Fair



## CERTIFICATION



## Our Services

## HOW TO COOPERATE



## PACKAGING & SHIPPING

Detection+Packing+Sealing+Finishing+International Express



## FAQ

## FAQ

**Q:Can I have a sample order?**

**A:Yes, we are willing to offer trial sample order to you for quality test. Mixed samples are acceptable.**

**Q:What is the lead time?**

**A:Sample needs 1-3 working days, mass production time needs 10-15 working days.**

**Q:What is your MOQ?**

**A:No MOQ limit.The more quantity the more discounts.**

**Q:How do you ship the goods and how long does it take arrive?**

**A:The sample will be sent to you by optional shipping service (couriers, air, and sea),or appointed by buyer,7-15 days.**

**Q:How will we proceed the order if I have logo to print?**

**A:Firstly, we will prepare artwork for visual confirmation. If the color and position are right, we would make sampling firstly from silk print factory and take picture for your second confirmation before mass production.**

***How to contact us?  
Click the enter send us inquiry below.***