

# Wireless GSM Magnetic Door Proximity Sensor In Home Alarm System

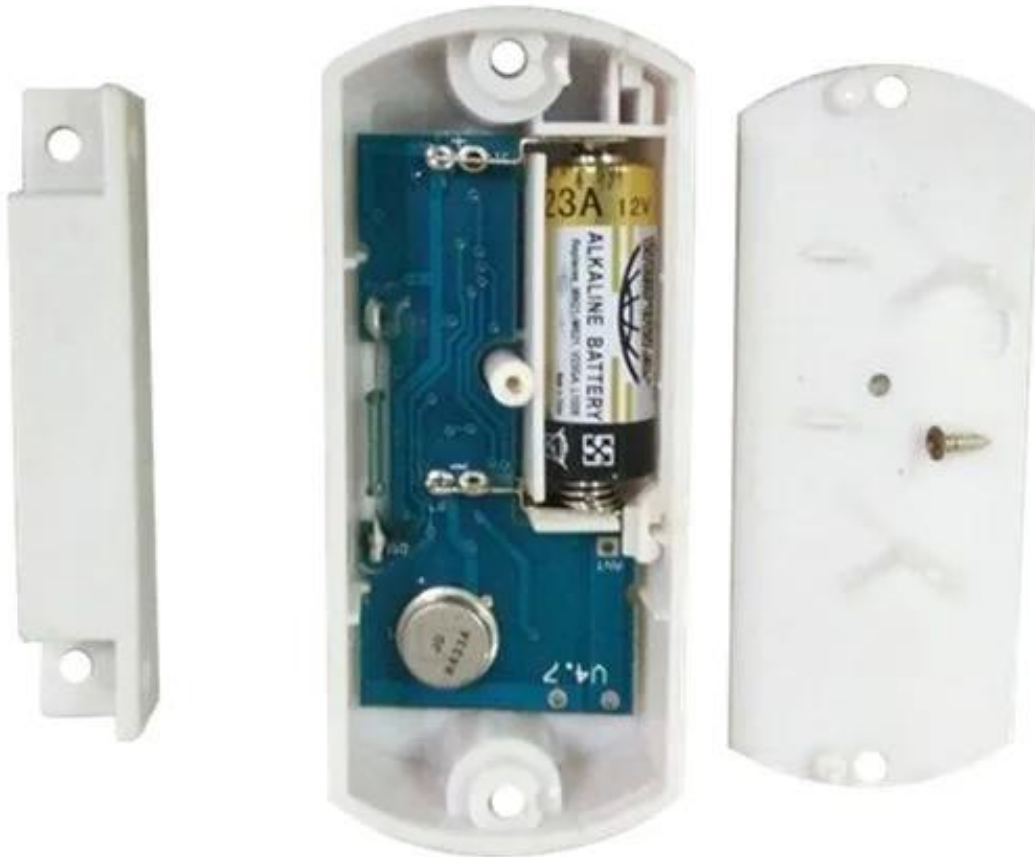
## Product Introduction



Specification	
Model	EB-130A
Dimension	65×38×20(mm) 55×10×10(mm)
Gap	40 ±5mm
Operating voltage	12V Alkaline battery
Battery work time	≤1years
Wireless frequency	315Mhz/433Mhz/868Mhz(optional)
Transmitting distance	≤100m(in the open area)
Shell color	White
Net weight	0.035kg

## Product Feature

## What features of our Wireless GSM Magnetic Door Proximity Sensor ?



**Fireproof ABS material**

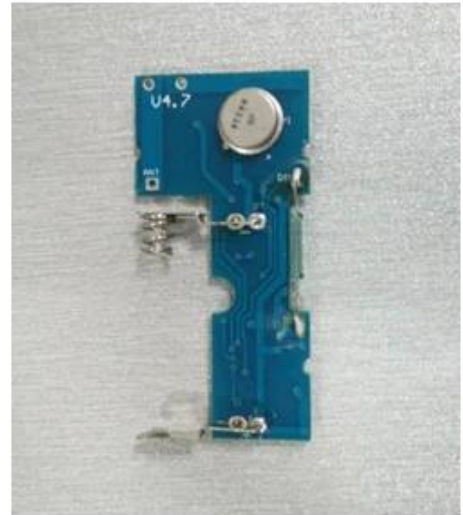
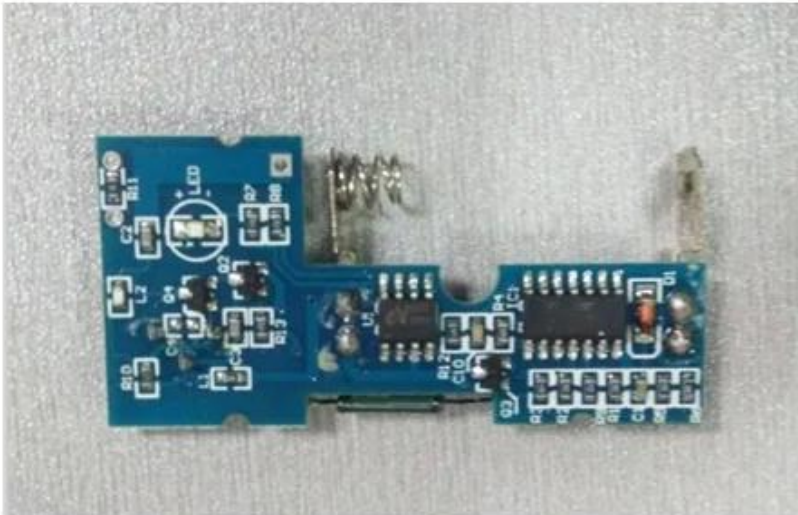
**Suitable for wooden door or window**

**2 years warranty, welcome OEM&ODM**

**Transmitting distance 100m(in the open area)**

**Frequency 315Mhz/433Mhz/868Mhz(optional)**

## IN-KIND SHOOTING



## SHOW CASES



## OFFICE SHOW



## CUSTOMERS



## EXHIBITION

2011 Brazil Fair



2012 shen yang Fair



2013 Jinan Fair



2013 Shenzhen Fair



2012 shen yang Fair



2013 shen yang Fair



2013 Shenzhen Fair



2015 Shenzhen Fair

# CERTIFICATION



## Our Services

## HOW TO COOPERATE



## PACKAGING & SHIPPING

Detection+Packing+Sealing+Finishing+International Express



## FAQ

**Q:Can I have a sample order?**

**A:Yes, we are willing to offer trial sample order to you for quality test. Mixed samples are acceptable.**

**Q:What is the lead time?**

**A:Sample needs 1-3 working days, mass production time needs 10-15 working days.**

**Q:What is your MOQ?**

**A:No MOQ limit.The more quantity the more discounts.**

**Q:How do you ship the goods and how long does it take arrive?**

**A:The sample will be sent to you by optional shipping service (couriers, air, and sea),or appointed by buyer,7-15 days.**

**Q:How will we proceed the order if I have logo to print?**

**A:Firstly, we will prepare artwork for visual confirmation. If the color and position are right, we would make sampling firstly from silk print factory and take picture for your second confirmation before mass production.**

***How to contact us?  
Click the enter send us inquiry below.***