

## SMQT wired magnetic contact door sensor with NC/NO/COM port



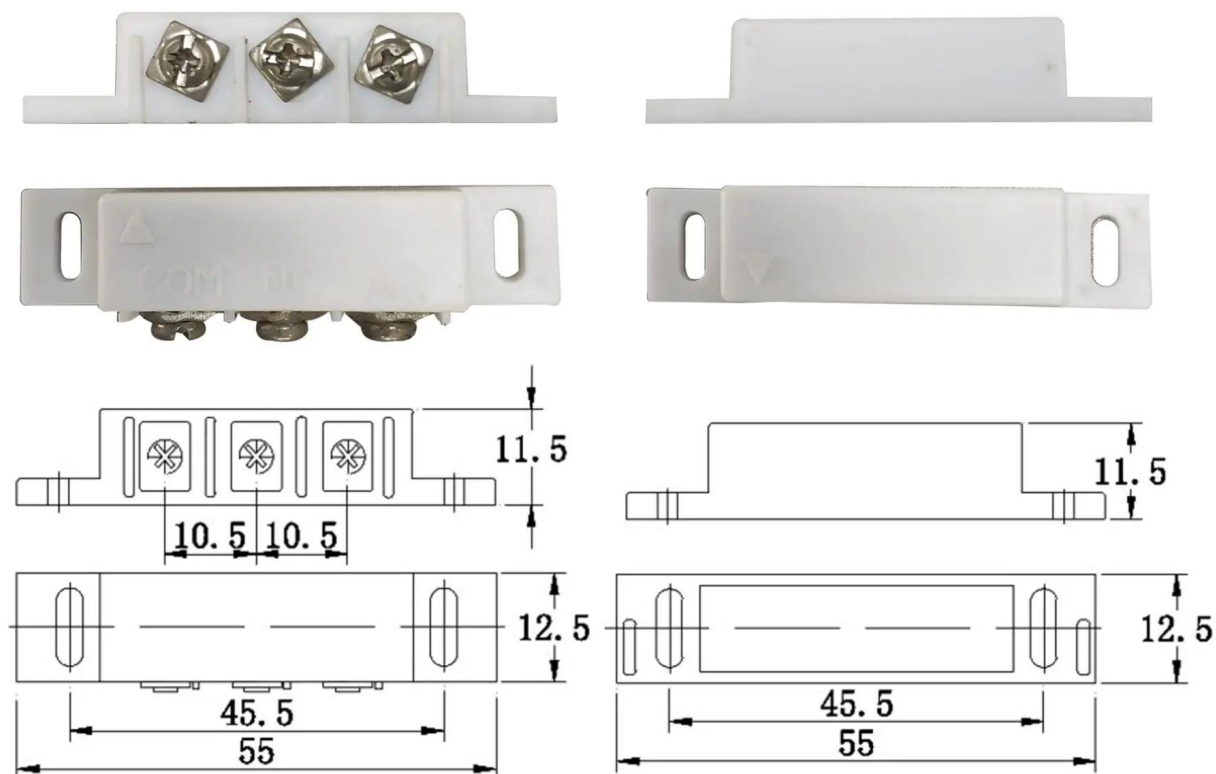
### EB-131B'S MAIN PARAMETER

<b>Product Name:</b>	3 contacts magnetic contact sensor with NO/NC/COM port
<b>Model number:</b>	EB-131B
<b>Working voltage:</b>	Max DC 100
<b>Working current:</b>	Max 0.5A
<b>Power consumption:</b>	10W
<b>Interface port:</b>	NO/NC/COM
<b>Induction gap:</b>	20~30mm
<b>Size:</b>	Reed part:55*12.5*11.5 (mm) Magnet part:55*12.5*11.5 (mm)
<b>Suitable for:</b>	<b>All kinds of door access control system and burglar alarm system</b>
<b>Material:</b>	ABS housing+ PCB board+Reed switch
<b>Housing color:</b>	White/Brown(optional)
<b>Weight:</b>	Unit:13g 10 pairs per bag, per bag weight 220g
<b>Warranty:</b>	2 years warranty

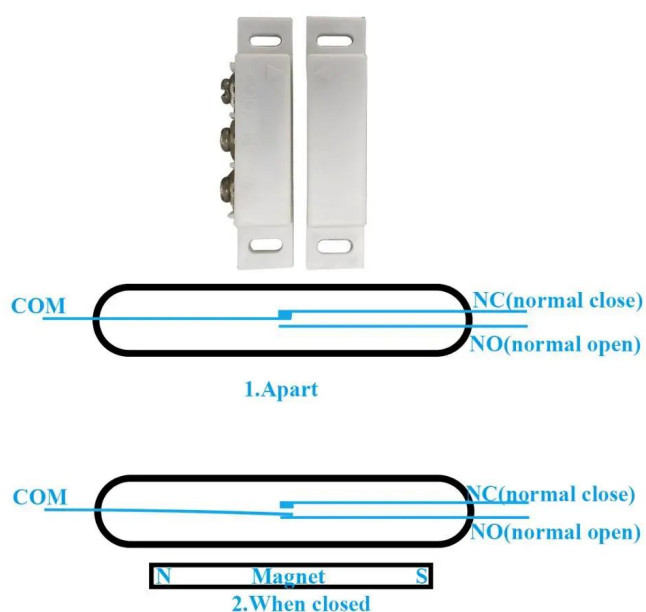
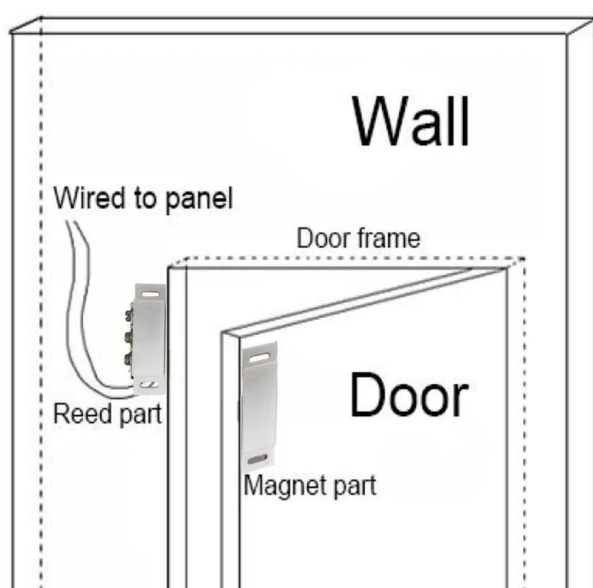
OEM:	Welcome OEM
------	-------------

## What features EB-131B have?

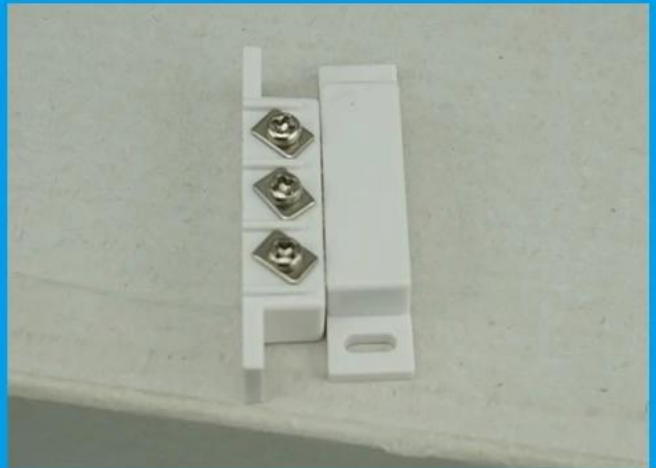
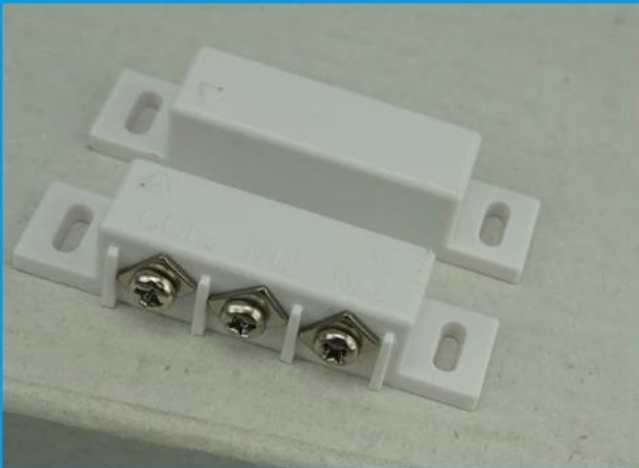
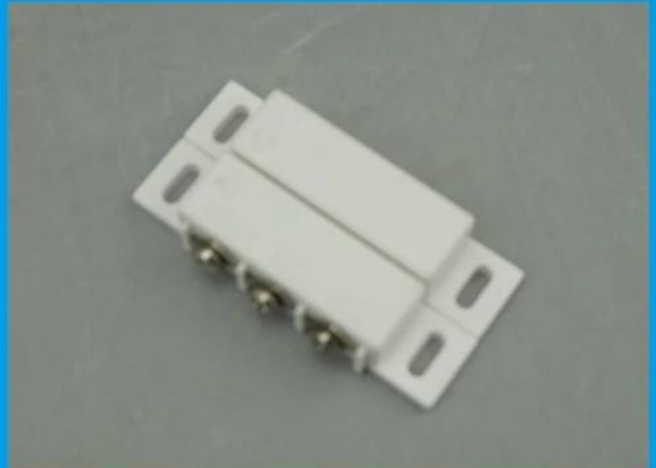
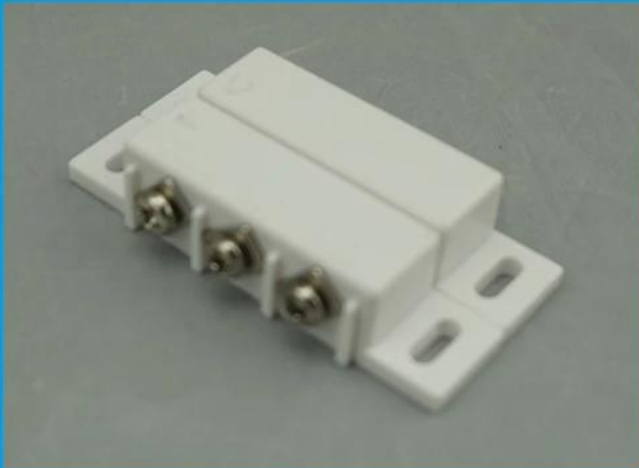
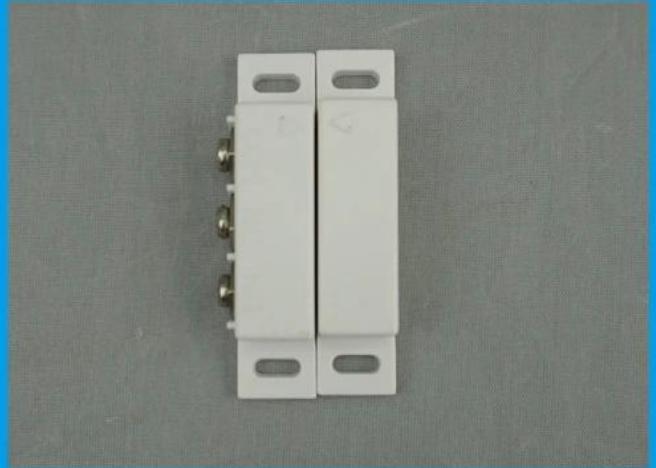
### Size



## Installation&working principle



## WHAT DOES EB-131B LOOK LIKE ?





## How about EB-131B's standard packaging?



## How about other choice?

**SMQT**  
铭汗科技



**SMQT**  
铭汗科技



**SMQT**  
铭汗科技



**SMQT**  
铭汗科技



**SMQT**  
铭汗科技



**SMQT**  
铭汗科技



**SMQT**  
铭汗科技



**SMQT**  
铭汗科技



**SMQT**  
铭汗科技



**SMQT**  
铭汗科技



**SMQT**  
铭汗科技



**SMQT**  
铭汗科技



