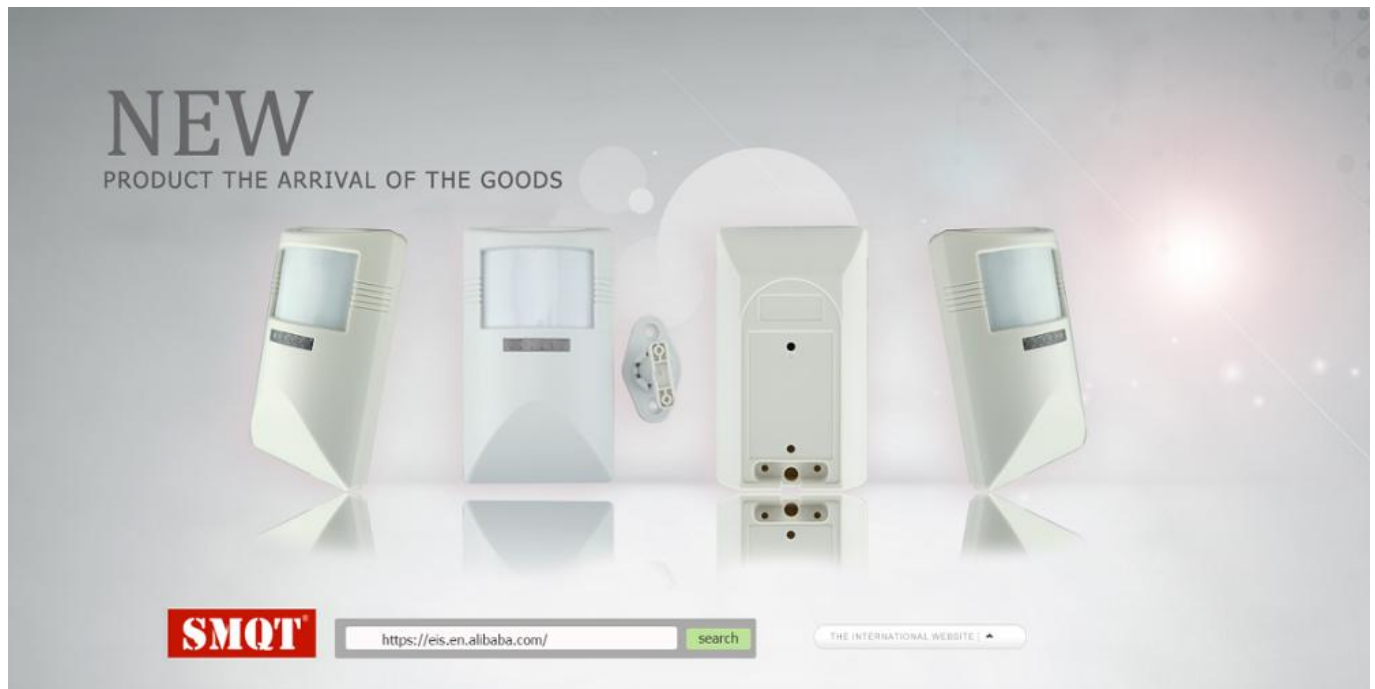


## wired Infrared PIR Motion sensor with pet 18kg

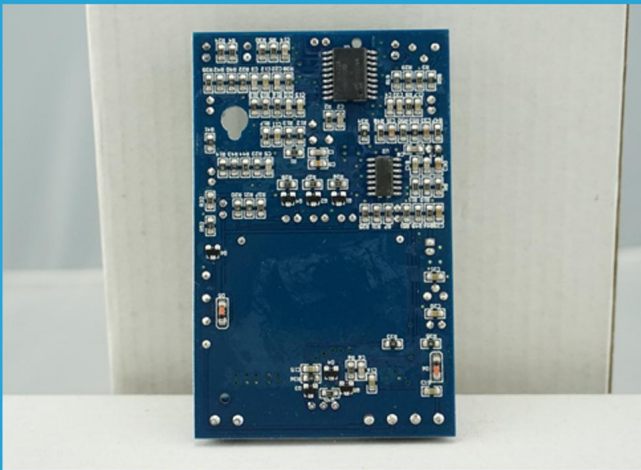


Specification	
Product name	wired Infrared PIR Motion sensor with pet 18kg
Model	EB-171
Size	130*68*45(mm)
Working voltage	12V DC
Detecting angle	110°
Working temperature	-20°C~50°C
Detecting speed	0.2~7m/sec
Install Height	2.2m
Storage temperature	-25°C~65°C
Alarm indicator	Red LED Light(close if need)
Alarm output	NC,28V DC,0.15A
Anti-tamper switch	NC,28V DC,0.15A
Operating humidity	95%
Color	White
Weight	0.1kg

Product Picture

---

**IN-KIND SHOOTING**



**Related Items**

---

**SHOW CASE**



## Product Features

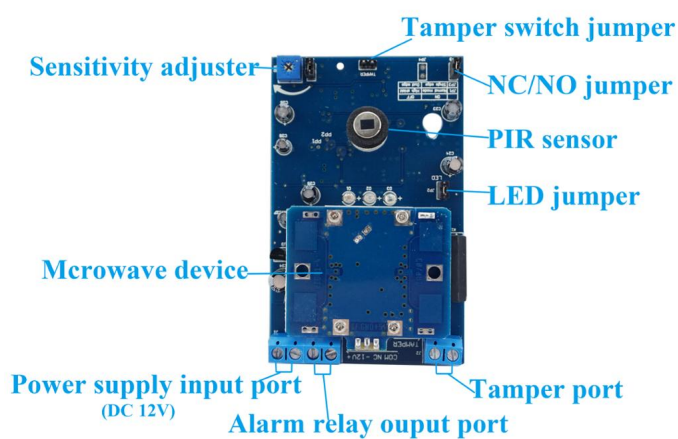
**What Features of our pir motion sensor?**



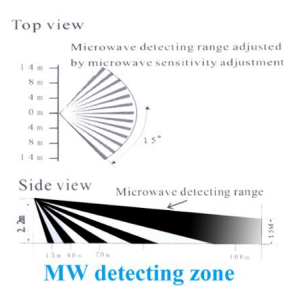
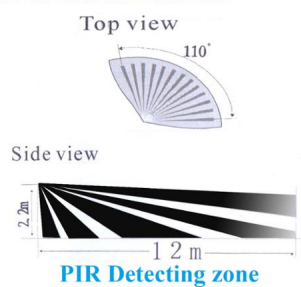








## Detection zone:



## Pet immune:



## Company Information

### OFFICE SHOW



### CUSTOMER



### EXHIBITION



## CERTIFICATE



## HOW TO COOPERATION





<b>Trade terms:</b>	<b>EXW</b>
<b>Payment terms:</b>	<b>T/T, Western union, Paypal etc</b>
<b>Delivery time:</b>	<b>Normal order within 7 days, bulk order 10-15days</b>
<b>Packing:</b>	<b>Neutral paper box and paper carton</b>
<b>Shipping:</b>	<b>Express company or by sea, by air or appointed by buyer</b>

## FAQ

## FAQ

### Q:Can I have a sample order?

A:Yes, we are willing to offer trial sample order to you for quality test. Mixed samples are acceptable.

### Q: What is the lead time?

A:Sample needs 1-3 working days, mass production time needs 10-15 working days for order less than 5000pcs.

### Q: Do you have any MOQ limit?

A:EXW MOQ is 100pcs under blank box.

**Q: How do you ship the goods and how long does it take arrive?**

**A:**The sample will be sent to you by optional shipping service (couriers, air, and sea). The delivery time depends on the shipping service.

**Q:How will we proceed the order if I have logo to print?**

**A:**Firstly, we will prepare artwork for visual confirmation. If the color and position are right, we would make sampling firstly from silk print factory and take picture for your second confirmation before mass production.

**Q: Does alarm panel work with any sensor?**

**A:**The alarm panel can work with all dry contact wired detectors and wireless detector, including almost all of the wireless sensors from Chinese manufacturers. The wireless encode and decode is EV1527 or our wireless sensors.