

Indoor 110 degree wall mounted Infrared PIR Motion detector alarm

Product Description



Specification	
Product name	SMQT New Good price Wired Alarm System Infrared PIR Presence Detector
Model	EB-171
Size	130*68*45(mm)
Working voltage	12V DC
Detecting angle	110°
Working temperature	-20°C~50°C
Detecting speed	0.2~7m/sec
Install Height	2.2m
Storage temperature	-25°C~65°C
Alarm indicator	Red LED Light(close if need)
Alarm output	NC,28V DC,0.15A
Anti-tamper switch	NC,28V DC,0.15A
Operating humidity	95%

Color	White
Weight	0.1kg

Product Feature

What's the features of our Stainless steel Switch Push button?



1.Wired Infrared PIR Motion Sensor.

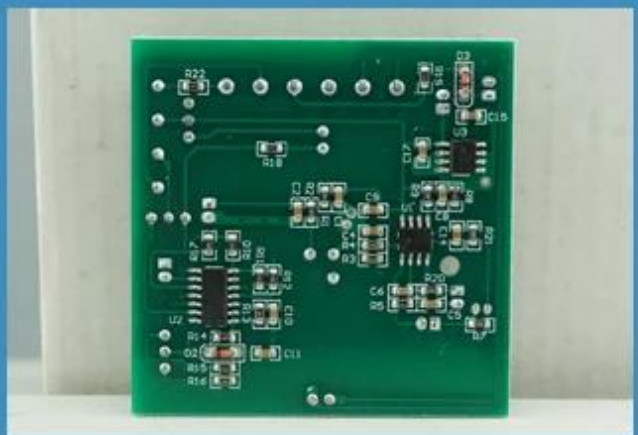
2.DC 12V power supply.

3.12m detection distance.

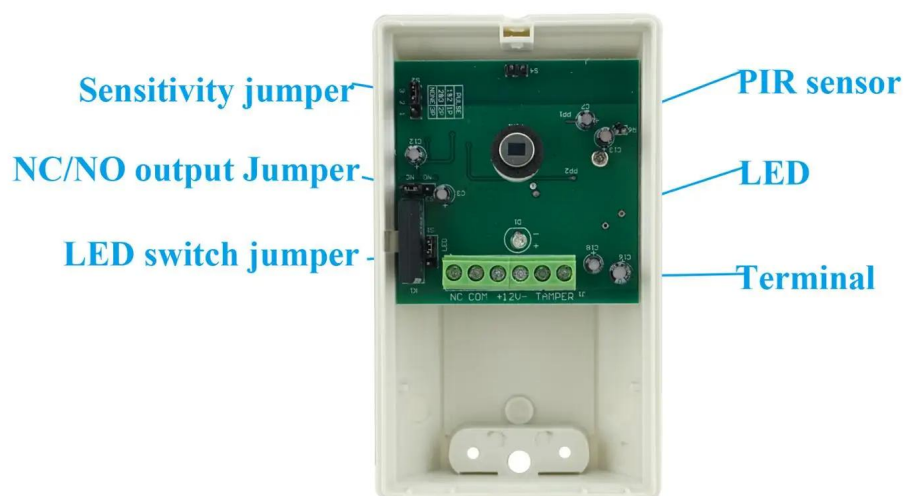
4.110° level detecting angle.

5.2 years warranty , welcome OEM

IN-KIND SHOOTING

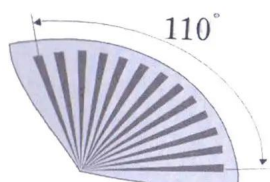


APPLICATION

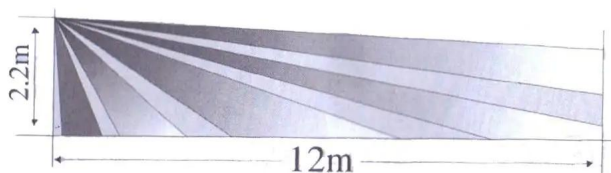


Detection zone:

Top view



Side view



Show Cases

SHOW CASES

<div><div>SMQT® 深圳市铭汗科技有限公司 SHENZHEN MINGQIAN TECHNOLOGY CO.,LTD</div><div></div><div><div>FC</div><div>✓</div><div>CE</div><div>https://eis.en.alibaba.com</div></div></div>	<div><div>SMQT® 深圳市铭汗科技有限公司 SHENZHEN MINGQIAN TECHNOLOGY CO.,LTD</div><div></div><div><div>FC</div><div>✓</div><div>CE</div><div>https://eis.en.alibaba.com</div></div></div>	<div><div>SMQT® 深圳市铭汗科技有限公司 SHENZHEN MINGQIAN TECHNOLOGY CO.,LTD</div><div></div><div><div>FC</div><div>✓</div><div>CE</div><div>https://eis.en.alibaba.com</div></div></div>
<div><div>SMQT® 深圳市铭汗科技有限公司 SHENZHEN MINGQIAN TECHNOLOGY CO.,LTD</div><div></div><div><div>FC</div><div>✓</div><div>CE</div><div>https://eis.en.alibaba.com</div></div></div>	<div><div>SMQT® 深圳市铭汗科技有限公司 SHENZHEN MINGQIAN TECHNOLOGY CO.,LTD</div><div></div><div><div>FC</div><div>✓</div><div>CE</div><div>https://eis.en.alibaba.com</div></div></div>	<div><div>SMQT® 深圳市铭汗科技有限公司 SHENZHEN MINGQIAN TECHNOLOGY CO.,LTD</div><div></div><div><div>FC</div><div>✓</div><div>CE</div><div>https://eis.en.alibaba.com</div></div></div>
<div><div>SMQT® 深圳市铭汗科技有限公司 SHENZHEN MINGQIAN TECHNOLOGY CO.,LTD</div><div></div><div><div>FC</div><div>✓</div><div>CE</div><div>https://eis.en.alibaba.com</div></div></div>	<div><div>SMQT® 深圳市铭汗科技有限公司 SHENZHEN MINGQIAN TECHNOLOGY CO.,LTD</div><div></div><div><div>FC</div><div>✓</div><div>CE</div><div>https://eis.en.alibaba.com</div></div></div>	<div><div>SMQT® 深圳市铭汗科技有限公司 SHENZHEN MINGQIAN TECHNOLOGY CO.,LTD</div><div></div><div><div>FC</div><div>✓</div><div>CE</div><div>https://eis.en.alibaba.com</div></div></div>

Company Information

OFFICE SHOW



CUSTOMERS



EXHIBITION

2011 Brazil Fair



2012 shen yang Fair



2013 Jinan Fair



2013 Shenzhen Fair



2012 shen yang Fair



2013 shen yang Fair



2013 Shenzhen Fair



2015 Shenzhen Fair



CERTIFICATION



Our Services

HOW TO COOPERATE



PACKAGING & SHIPPING

Detection+Packing+Sealing+Finishing+International Express



Inquiry



Contract



Testing and packing



Receiving



Reply

Receive payment&Product

Delivery



FAQ

FAQ

Q:Can I have a sample order?

A:Yes, we are willing to offer trial sample order to you for quality test. Mixed samples are acceptable.

Q:What is the lead time?

A:Sample needs 1-3 working days, mass production time needs 10-15 working days.

Q:What is your MOQ?

A:No MOQ limit.The more quantity the more discounts.

Q:How do you ship the goods and how long does it take arrive?

A:The sample will be sent to you by optional shipping service (couriers, air, and sea),or appointed by buyer,7-15 days.

Q:How will we proceed the order if I have logo to print?

A:Firstly, we will prepare artwork for visual confirmation. If the color and position are right, we would make sampling firstly from silk print factory and take picture for your second confirmation before mass production.

***How to contact us?
Click the enter send us inquiry below.***