

Interruptor de contato magnético

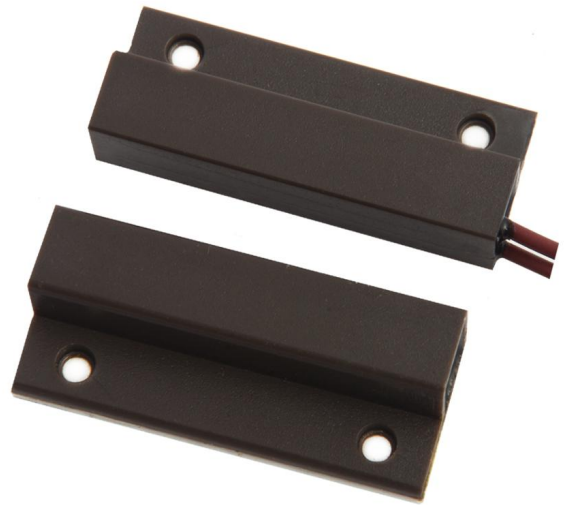
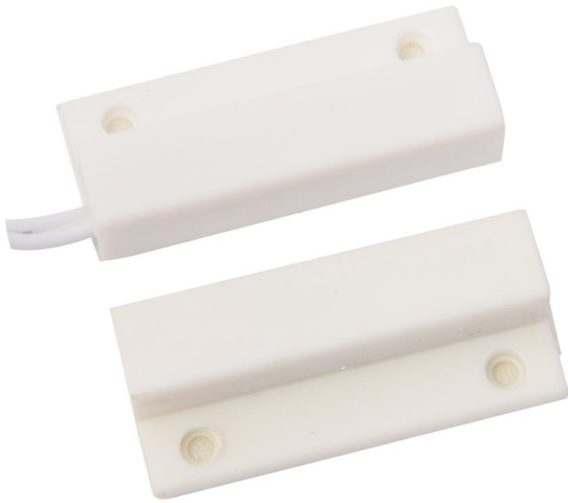
SMQT

New

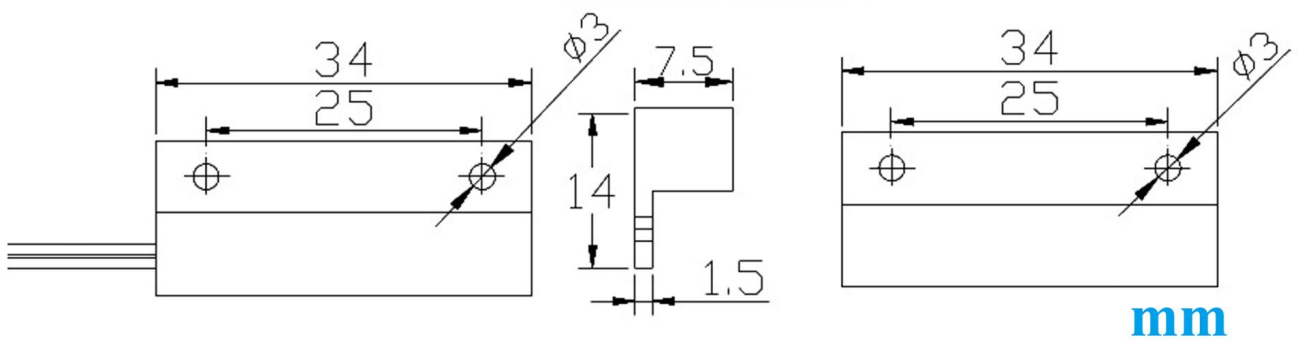
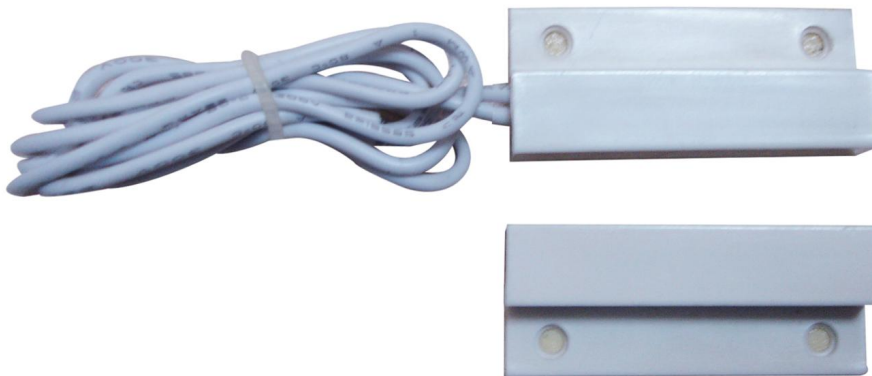
Access control & Alarm product supplier



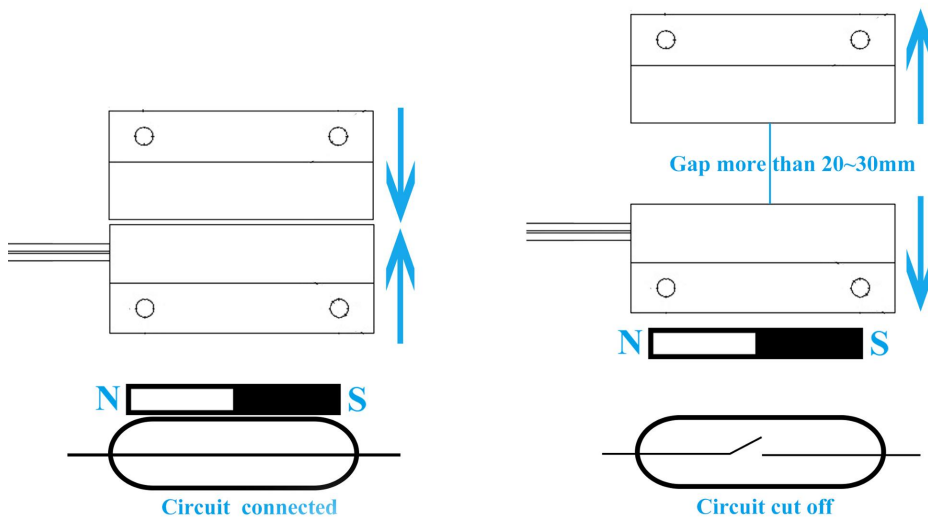
2 Color optional



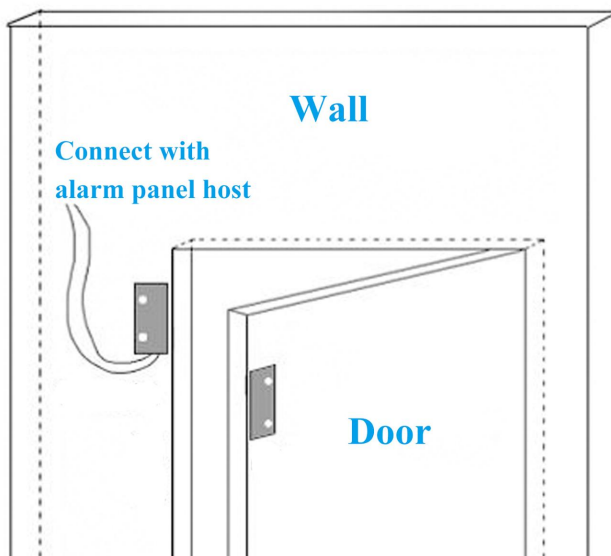
Size



NC mode working principle



Installation



Packaging

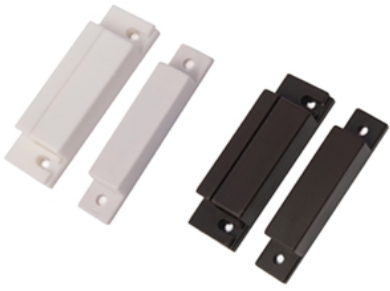


PARÂMETRO PRINCIPAL DO EB-132

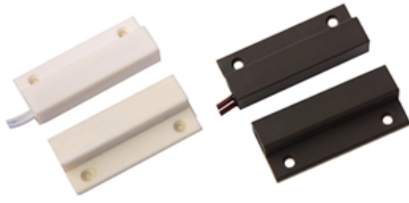
Nome do Produto:	Interruptor de contato magnético
Número do modelo:	EB-132
Tensão de trabalho:	Max DC 100
Corrente de trabalho:	Máximo 0,5A
Consumo de energia:	10W
Porta de interface:	NC / COM
Lacuna de indução:	20 ~ 30mm
Tamanho:	Parte Reed: 34 * 14 * 7,5 (mm) Parte do ímã: 34 * 14 * 7.5 (mm)
Adequado para:	Todos os tipos de sistema de controle de acesso porta e sistema de alarme
Material:	Carcaça ABS + placa PCB + interruptor Reed
Cor da carcaça:	Branco / Marrom (opcional)
Peso:	Unidade: 12g 20 pares por saco, por saco de peso 250g
Garantia:	2 anos de garantia
OEM:	Bem-vindo OEM

COMO SOBRE OUTRA ESCOLHA?

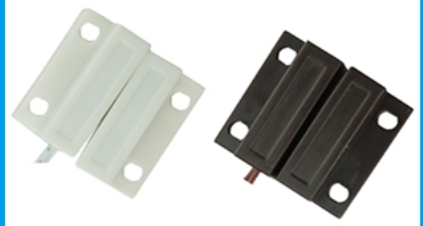
SMQT
铭汗科技



SMQT
铭汗科技



SMQT
铭汗科技



SMQT
铭汗科技



SMQT
铭汗科技



SMQT
铭汗科技



SMQT
铭汗科技



SMQT
铭汗科技



SMQT
铭汗科技

